




Product datasheet

Anti-NOLC1 antibody ab204318

★★★★☆ 1 Abreviews 2 Images

Overview

Product name	Anti-NOLC1 antibody
Description	Rabbit polyclonal to NOLC1
Host species	Rabbit
Tested applications	Suitable for: ICC/IF, IHC-P
Species reactivity	Reacts with: Human Predicted to work with: Mouse, Rat 
Immunogen	Recombinant fragment corresponding to Human NOLC1 aa 575-664. Sequence: VVVSKSGSLKKRKQNEAAKEAETPQAKKIKLQTPNTF PKRKKGEKRASSP FRRVREEEIEVDSRVADNSFDAKRGAGDWGERANQ VLKF Database link: Q14978  Run BLAST with  Run BLAST with
Positive control	Human cerebral cortex tissue; HEK 293 cells.

Properties

Form	Liquid
Storage instructions	Shipped at 4°C. Store at +4°C short term (1-2 weeks). Upon delivery aliquot. Store at -20°C long term. Avoid freeze / thaw cycle.
Storage buffer	pH: 7.2 Preservative: 0.02% Sodium azide Constituents: 40% Glycerol, 59% PBS
Purity	Immunogen affinity purified
Clonality	Polyclonal
Isotype	IgG

Applications

Our [Abpromise guarantee](#) covers the use of **ab204318** in the following tested applications.

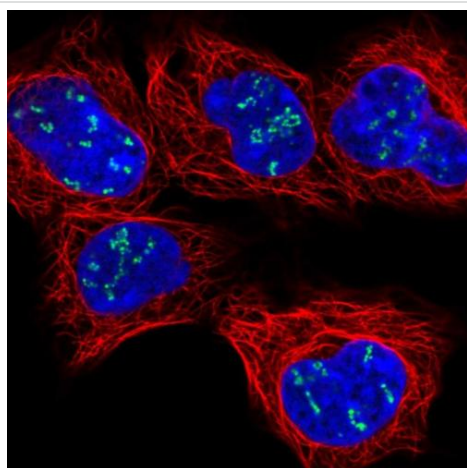
The application notes include recommended starting dilutions; optimal dilutions/concentrations should be determined by the end user.

Application	Abreviews	Notes
ICC/IF		Use a concentration of 1 - 4 µg/ml.
IHC-P		1/500 - 1/1000. Perform heat mediated antigen retrieval with citrate buffer pH 6 before commencing with IHC staining protocol.

Target

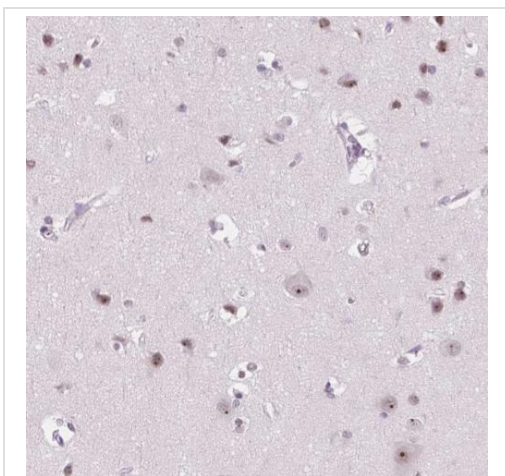
Function	Related to nucleogenesis, may play a role in the maintenance of the fundamental structure of the fibrillar center and dense fibrillar component in the nucleolus. It has intrinsic GTPase and ATPase activities. May play an important role in transcription catalyzed by RNA polymerase I.
Sequence similarities	Contains 1 LisH domain.
Post-translational modifications	Undergoes rapid and massive phosphorylation/dephosphorylation cycles on CK2 and PKC sites. There is evidence suggesting that CDK1 kinase phosphorylates p130 at the M-phase.
Cellular localization	Nucleus > nucleolus. Cytoplasm. Shuttles between the nucleolus and the cytoplasm. At telophase it begins to assemble into granular-like pre-nucleolar bodies which are subsequently relocated to nucleoli at the early G1-phase.

Images



Immunofluorescent analysis of HEK 293 cells (PFA-fixed/Triton X-100 permeabilized) labeling NOLC1 with ab204318 at 4 µg/ml.

Immunocytochemistry/ Immunofluorescence - Anti-NOLC1 antibody (ab204318)



Immunohistochemical analysis of paraffin-embedded Human cerebral cortex tissue, labeling NOLC1 with ab204318 at 1/500 dilution.

Immunohistochemistry (Formalin/PFA-fixed paraffin-embedded sections) - Anti-NOLC1 antibody (ab204318)

Please note: All products are "FOR RESEARCH USE ONLY. NOT FOR USE IN DIAGNOSTIC PROCEDURES"

Our Abpromise to you: Quality guaranteed and expert technical support

- Replacement or refund for products not performing as stated on the datasheet
- Valid for 12 months from date of delivery
- Response to your inquiry within 24 hours

- We provide support in Chinese, English, French, German, Japanese and Spanish
- Extensive multi-media technical resources to help you
- We investigate all quality concerns to ensure our products perform to the highest standards

If the product does not perform as described on this datasheet, we will offer a refund or replacement. For full details of the Abpromise, please visit <https://www.abcam.com/abpromise> or contact our technical team.

Terms and conditions

- Guarantee only valid for products bought direct from Abcam or one of our authorized distributors