




Product datasheet

Anti-NR2E1/Tailless/TLX antibody ab86276

1 References 5 Images

Overview

Product name	Anti-NR2E1/Tailless/TLX antibody
Description	Rabbit polyclonal to NR2E1/Tailless/TLX
Host species	Rabbit
Tested applications	Suitable for: IHC-P, WB
Species reactivity	<p>Reacts with: Human</p> <p>Predicted to work with: Mouse, Rat, Rabbit, Horse, Guinea pig, Cow, Dog, Zebrafish </p>
Immunogen	<p>Synthetic peptide within Human NR2E1/Tailless/TLX aa 2-51 (N terminal). The exact sequence is proprietary.</p> <p>Sequence:</p> <p>SKPAGSTSRILDIPCKVCGDRSSGKHVYACDGC SGFF KRSIRRNRITYV</p> <p>Database link: NP_003260</p> <p style="text-align: right;"> Run BLAST with  Run BLAST with</p>
Positive control	WB: Human fetal heart and muscle tissue. IHC-P: Human placenta, prostate and brain tissues.
General notes	<p>Previously labelled as NR2E1 / Tailless.</p> <p>Reproducibility is key to advancing scientific discovery and accelerating scientists' next breakthrough.</p> <p>Abcam is leading the way with our range of recombinant antibodies, knockout-validated antibodies and knockout cell lines, all of which support improved reproducibility.</p> <p>We are also planning to innovate the way in which we present recommended applications and species on our product datasheets, so that only applications & species that have been tested in our own labs, our suppliers or by selected trusted collaborators are covered by our Abpromise™ guarantee.</p> <p>In preparation for this, we have started to update the applications & species that this product is Abpromise guaranteed for.</p> <p>We are also updating the applications & species that this product has been “predicted to work with,” however this information is not covered by our Abpromise guarantee.</p> <p>Applications & species from publications and Abreviews that have not been tested in our own labs or in those of our suppliers are not covered by the Abpromise guarantee.</p> <p>Please check that this product meets your needs before purchasing. If you have any questions,</p>

special requirements or concerns, please send us an inquiry and/or contact our Support team ahead of purchase. Recommended alternatives for this product can be found below, as well as customer reviews and Q&As.

Properties

Form	Liquid
Storage instructions	Shipped at 4°C. Store at +4°C short term (1-2 weeks). Upon delivery aliquot. Store at -20°C long term. Avoid freeze / thaw cycle.
Storage buffer	pH: 7.2 Preservative: 0.09% Sodium azide Constituents: PBS, 2% Sucrose
Purity	Immunogen affinity purified
Clonality	Polyclonal
Isotype	IgG

Applications

Our [Abpromise guarantee](#) covers the use of **ab86276** in the following tested applications.

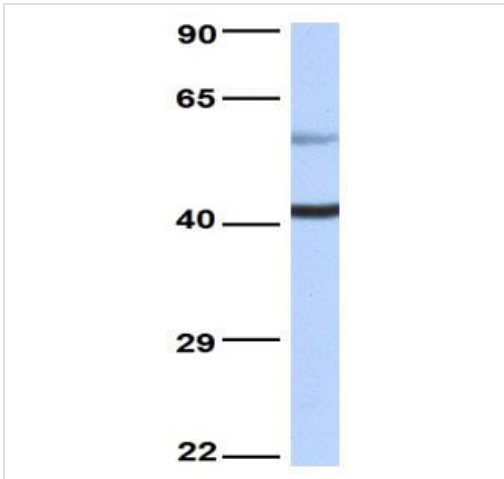
The application notes include recommended starting dilutions; optimal dilutions/concentrations should be determined by the end user.

Application	Abreviews	Notes
IHC-P		Use at an assay dependent concentration.
WB		Use a concentration of 1 µg/ml. Predicted molecular weight: 43 kDa.

Target

Function	Orphan receptor that binds DNA as a monomer to hormone response elements (HRE) containing an extended core motif half-site sequence 5'-AAGGTCA-3' in which the 5' flanking nucleotides participate in determining receptor specificity. May be required for brain development. May be involved in the regulation of retinal development.
Tissue specificity	Brain specific. Present in all brain sections tested, highest levels in the caudate nucleus and hippocampus, weakest levels in the thalamus.
Sequence similarities	Belongs to the nuclear hormone receptor family. NR2 subfamily. Contains 1 nuclear receptor DNA-binding domain.
Cellular localization	Nucleus.

Images

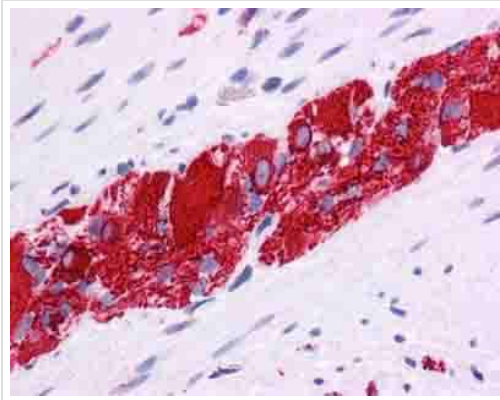


Western blot - Anti-NR2E1/Tailless/TLX antibody (ab86276)

Anti-NR2E1/Tailless/TLX antibody (ab86276) at 1 µg + Human fetal heart lysate at 10 µg

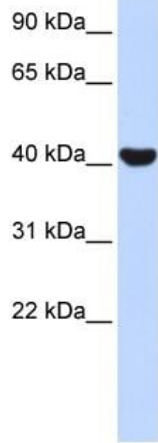
Predicted band size: 43 kDa

Western blot analysis of Human fetal heart tissue lysate labeling NR2E1/Tailless/TLX with ab86276 at 1.0µg/ml.



Immunohistochemistry (Formalin/PFA-fixed paraffin-embedded sections) - Anti-NR2E1/Tailless/TLX antibody (ab86276)

ab86276 staining NR2E1/Tailless/TLX in colon tissue by Immunohistochemistry (Formalin/PFA-fixed paraffin-embedded sections).



Western blot - Anti-NR2E1/Tailless/TLX antibody (ab86276)

Anti-NR2E1/Tailless/TLX antibody (ab86276) at 1 µg/ml + Fetal muscle lysate at 10 µg with 5% skim milk/ PBS buffer

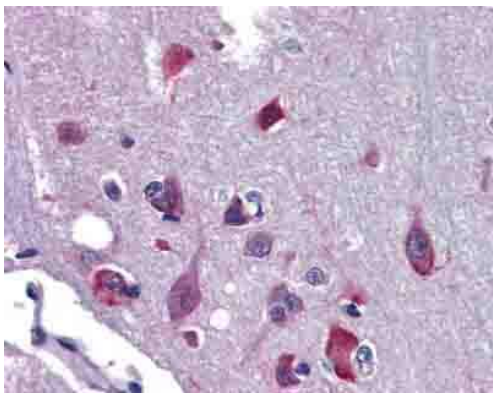
Secondary

HRP conjugated anti-Rabbit IgG at 1/50000 dilution

Predicted band size: 43 kDa

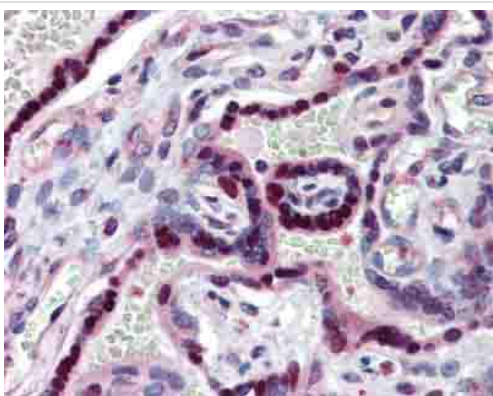
Observed band size: 43 kDa

Western blot analysis of Human fetal muscle tissue lysate labeling NR2E1/Tailless/TLX with ab86276 at 1.0µg/ml.



Immunohistochemistry (Formalin/PFA-fixed paraffin-embedded sections) - Anti-NR2E1/Tailless/TLX antibody (ab86276)

ab86276 staining NR2E1/Tailless/TLX in human brain, cortex tissue by Immunohistochemistry (Formalin/PFA-fixed paraffin-embedded sections).



Immunohistochemistry (Formalin/PFA-fixed paraffin-embedded sections) - Anti-NR2E1/Tailless/TLX antibody (ab86276)

ab86276 staining NR2E1/Tailless/TLX in human placenta tissue by Immunohistochemistry (Formalin/PFA-fixed paraffin-embedded sections).

Our Abpromise to you: Quality guaranteed and expert technical support

- Replacement or refund for products not performing as stated on the datasheet
- Valid for 12 months from date of delivery
- Response to your inquiry within 24 hours

- We provide support in Chinese, English, French, German, Japanese and Spanish
- Extensive multi-media technical resources to help you
- We investigate all quality concerns to ensure our products perform to the highest standards

If the product does not perform as described on this datasheet, we will offer a refund or replacement. For full details of the Abpromise, please visit <https://www.abcam.com/abpromise> or contact our technical team.

Terms and conditions

- Guarantee only valid for products bought direct from Abcam or one of our authorized distributors