

## Product datasheet

# Anti-NR2E1/Tailless/TLX antibody [EPR4491] ab109179

Recombinant RabMAb

1 References 3 Images

### Overview

<b>Product name</b>	Anti-NR2E1/Tailless/TLX antibody [EPR4491]
<b>Description</b>	Rabbit monoclonal [EPR4491] to NR2E1/Tailless/TLX
<b>Host species</b>	Rabbit
<b>Tested applications</b>	<b>Suitable for:</b> WB <b>Unsuitable for:</b> Flow Cyt, ICC, IHC-P or IP
<b>Species reactivity</b>	<b>Reacts with:</b> Mouse, Rat, Human
<b>Immunogen</b>	Synthetic peptide corresponding to Human NR2E1/Tailless/TLX aa 1-100. Database link: <a href="#">Q9Y466</a>
<b>Positive control</b>	Fetal brain, Human hippocampus, SH-SY5Y and Jurkat lysates
<b>General notes</b>	

Previously labelled as NR2E1 / Tailless.

This product is a recombinant monoclonal antibody, which offers several advantages including:

- High batch-to-batch consistency and reproducibility
- Improved sensitivity and specificity
- Long-term security of supply
- Animal-free production

For more information [see here](#).

Our RabMAb<sup>®</sup> technology is a patented hybridoma-based technology for making rabbit monoclonal antibodies. For details on our patents, please refer to [RabMAb<sup>®</sup> patents](#).

Reproducibility is key to advancing scientific discovery and accelerating scientists' next breakthrough.

Abcam is leading the way with our range of recombinant antibodies, knockout-validated antibodies and knockout cell lines, all of which support improved reproducibility.

We are also planning to innovate the way in which we present recommended applications and species on our product datasheets, so that only applications & species that have been tested in our own labs, our suppliers or by selected trusted collaborators are covered by our Abpromise<sup>™</sup> guarantee.

In preparation for this, we have started to update the applications & species that this product is Abpromise guaranteed for.

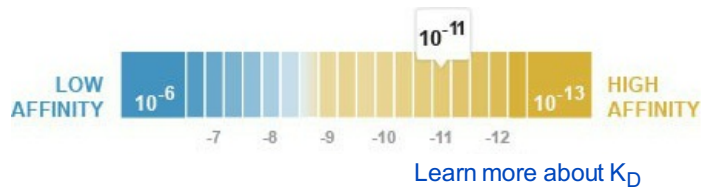
We are also updating the applications & species that this product has been “predicted to work with,” however this information is not covered by our Abpromise guarantee.

Applications & species from publications and Abreviews that have not been tested in our own labs or in those of our suppliers are not covered by the Abpromise guarantee.

Please check that this product meets your needs before purchasing. If you have any questions, special requirements or concerns, please send us an inquiry and/or contact our Support team ahead of purchase. Recommended alternatives for this product can be found below, as well as customer reviews and Q&As.

## Properties

<b>Form</b>	Liquid
<b>Storage instructions</b>	Shipped at 4°C. Store at -20°C. Stable for 12 months at -20°C.
<b>Dissociation constant (K<sub>D</sub>)</b>	K <sub>D</sub> = 9.30 x 10 <sup>-11</sup> M



<b>Storage buffer</b>	pH: 7.20 Preservative: 0.05% Sodium azide Constituents: 0.1% BSA, 40% Glycerol (glycerin, glycerine), 9.85% Tris glycine, 50% Tissue culture supernatant
<b>Purity</b>	Tissue culture supernatant
<b>Clonality</b>	Monoclonal
<b>Clone number</b>	EPR4491
<b>Isotype</b>	IgG

## Applications

Our [Abpromise guarantee](#) covers the use of **ab109179** in the following tested applications.

The application notes include recommended starting dilutions; optimal dilutions/concentrations should be determined by the end user.

Application	Abreviews	Notes
WB		1/1000 - 1/10000. Predicted molecular weight: 43 kDa.

**Application notes** Is unsuitable for Flow Cyt, ICC, IHC-P or IP.

## Target

**Function** Orphan receptor that binds DNA as a monomer to hormone response elements (HRE) containing an extended core motif half-site sequence 5'-AAGGTCA-3' in which the 5' flanking nucleotides participate in determining receptor specificity. May be required for brain development. May be involved in the regulation of retinal development.

## Tissue specificity

Brain specific. Present in all brain sections tested, highest levels in the caudate nucleus and hippocampus, weakest levels in the thalamus.

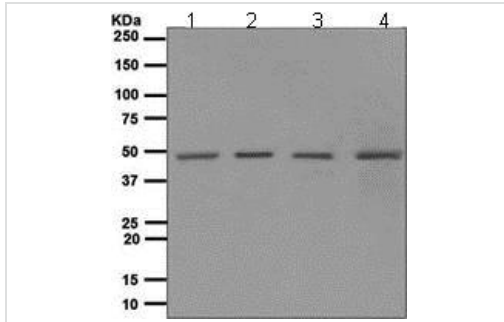
## Sequence similarities

Belongs to the nuclear hormone receptor family. NR2 subfamily.  
Contains 1 nuclear receptor DNA-binding domain.

## Cellular localization

Nucleus.

## Images



Western blot - Anti-NR2E1/Tailless/TLX antibody [EPR4491] (ab109179)

**All lanes :** Anti-NR2E1/Tailless/TLX antibody [EPR4491] (ab109179) at 1/1000 dilution

**Lane 1 :** Fetal brain lysate

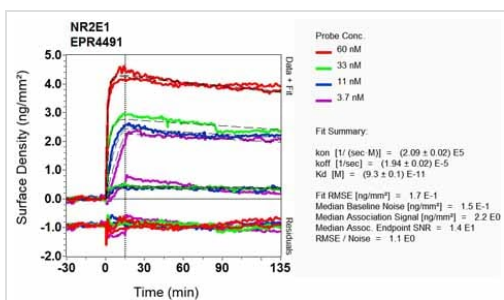
**Lane 2 :** Human hippocampus lysate

**Lane 3 :** SH-SY5Y lysate

**Lane 4 :** Jurkat lysate

Lysates/proteins at 10 µg per lane.

**Predicted band size:** 43 kDa



O1-RD Scanning - Anti-NR2E1/Tailless/TLX antibody [EPR4491] (ab109179)

Equilibrium dissociation constant ( $K_D$ )

Learn more about  $K_D$

[Click here to learn more about  \$K\_D\$](#)

### Why choose a recombinant antibody?



**Research with confidence**  
Consistent and reproducible results



**Long-term and scalable supply**  
Recombinant technology



**Success from the first experiment**  
Confirmed specificity



**Ethical standards compliant**  
Animal-free production

Anti-NR2E1/Tailless/TLX antibody [EPR4491]

(ab109179)

**Please note:** All products are "FOR RESEARCH USE ONLY. NOT FOR USE IN DIAGNOSTIC PROCEDURES"

### Our Abpromise to you: Quality guaranteed and expert technical support

---

- Replacement or refund for products not performing as stated on the datasheet
- Valid for 12 months from date of delivery
- Response to your inquiry within 24 hours
- We provide support in Chinese, English, French, German, Japanese and Spanish
- Extensive multi-media technical resources to help you
- We investigate all quality concerns to ensure our products perform to the highest standards

If the product does not perform as described on this datasheet, we will offer a refund or replacement. For full details of the Abpromise, please visit <https://www.abcam.com/abpromise> or contact our technical team.

### Terms and conditions

---

- Guarantee only valid for products bought direct from Abcam or one of our authorized distributors