


## Product datasheet

# Anti-NRBF2 antibody ab85733

1 Abreviews 2 Images

### Overview

---

<b>Product name</b>	Anti-NRBF2 antibody
<b>Description</b>	Rabbit polyclonal to NRBF2
<b>Host species</b>	Rabbit
<b>Tested applications</b>	<b>Suitable for:</b> WB, IP
<b>Species reactivity</b>	<b>Reacts with:</b> Mouse, Human <b>Predicted to work with:</b> Chimpanzee, Rhesus monkey, Gorilla, Orangutan 
<b>Immunogen</b>	Synthetic peptide corresponding to a region between residue 237 and 287 of Human NRBF2 (NP_110386.2).
<b>Positive control</b>	Whole cell lysate from HeLa, 293T and mouse NIH3T3 cells.
<b>General notes</b>	<p>Reproducibility is key to advancing scientific discovery and accelerating scientists' next breakthrough.</p> <p>Abcam is leading the way with our range of recombinant antibodies, knockout-validated antibodies and knockout cell lines, all of which support improved reproducibility.</p> <p>We are also planning to innovate the way in which we present recommended applications and species on our product datasheets, so that only applications &amp; species that have been tested in our own labs, our suppliers or by selected trusted collaborators are covered by our Abpromise™ guarantee.</p> <p>In preparation for this, we have started to update the applications &amp; species that this product is Abpromise guaranteed for.</p> <p>We are also updating the applications &amp; species that this product has been “predicted to work with,” however this information is not covered by our Abpromise guarantee.</p> <p>Applications &amp; species from publications and Abreviews that have not been tested in our own labs or in those of our suppliers are not covered by the Abpromise guarantee.</p> <p>Please check that this product meets your needs before purchasing. If you have any questions, special requirements or concerns, please send us an inquiry and/or contact our Support team ahead of purchase. Recommended alternatives for this product can be found below, as well as customer reviews and Q&amp;As.</p>

### Properties

---

<b>Form</b>	Liquid
<b>Storage instructions</b>	Shipped at 4°C. Upon delivery aliquot and store at -20°C. Avoid freeze / thaw cycles.
<b>Storage buffer</b>	pH: 7 Preservative: 0.09% Sodium azide Constituent: Tris citrate/phosphate
<b>Purity</b>	Immunogen affinity purified
<b>Clonality</b>	Polyclonal
<b>Isotype</b>	IgG

## Applications

Our [Abpromise guarantee](#) covers the use of **ab85733** in the following tested applications.

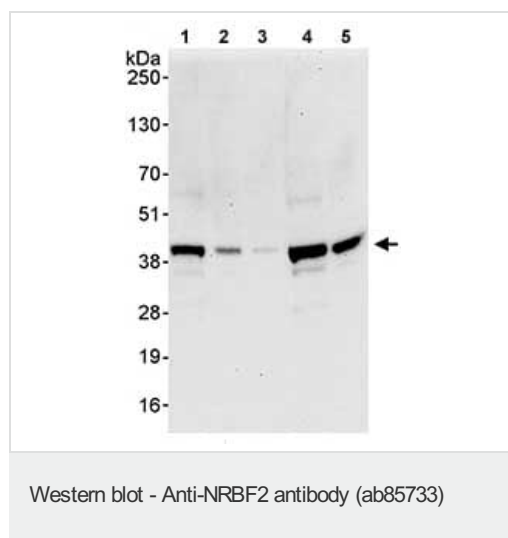
The application notes include recommended starting dilutions; optimal dilutions/concentrations should be determined by the end user.

Application	Abreviews	Notes
WB		1/2000 - 1/10000. Predicted molecular weight: 32 kDa.
IP		Use at 2-5 µg/mg of lysate.

## Target

<b>Function</b>	May modulate transcriptional activation by target nuclear receptors. Can act as transcriptional activator (in vitro).
<b>Tissue specificity</b>	Detected in keratinocytes, liver and placenta.
<b>Cellular localization</b>	Nucleus. Cytoplasm.

## Images



**All lanes** : Anti-NRBF2 antibody (ab85733) at 0.4 µg/ml

**Lane 1** : Whole cell lysate from HeLa cells at 50 µg

**Lane 2** : Whole cell lysate from HeLa cells at 15 µg

**Lane 3** : Whole cell lysate from HeLa cells at 5 µg

**Lane 4** : Whole cell lysate from 293T cells at 50 µg

**Lane 5** : Whole cell lysate from NIH3T3 cells at 50 µg

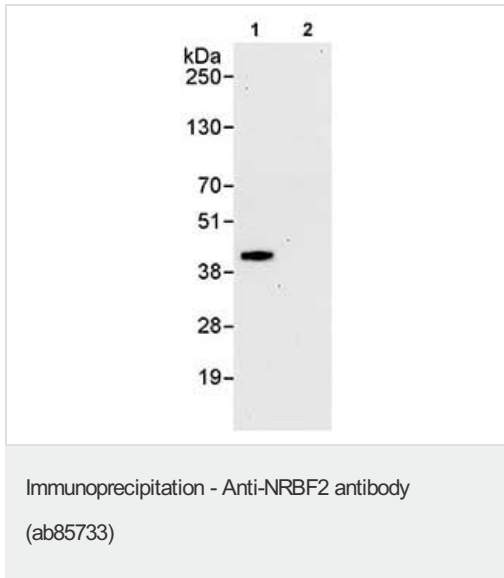
Developed using the ECL technique.

**Predicted band size:** 32 kDa

**Observed band size:** 40 kDa

[why is the actual band size different from the predicted?](#)

**Exposure time:** 30 seconds



Detection of Human NRBF2 in Immunoprecipitates of Whole cell lysate from HeLa cells (1 mg for IP, 20% of IP loaded) using ab85733 at 3 µg/mg lysate for IP (Lane 1) and at 1 µg/ml for subsequent Western blot detection. Lane 2 represents control IgG IP. Detection: Chemiluminescence with an exposure time of 30 seconds.

**Please note:** All products are "FOR RESEARCH USE ONLY. NOT FOR USE IN DIAGNOSTIC PROCEDURES"

### Our Abpromise to you: Quality guaranteed and expert technical support

- Replacement or refund for products not performing as stated on the datasheet
- Valid for 12 months from date of delivery
- Response to your inquiry within 24 hours
- We provide support in Chinese, English, French, German, Japanese and Spanish
- Extensive multi-media technical resources to help you
- We investigate all quality concerns to ensure our products perform to the highest standards

If the product does not perform as described on this datasheet, we will offer a refund or replacement. For full details of the Abpromise, please visit <https://www.abcam.com/abpromise> or contact our technical team.

### Terms and conditions

- Guarantee only valid for products bought direct from Abcam or one of our authorized distributors