


Product datasheet

Anti-NSE antibody [NSE-P1] ab24709

1 Image

Overview

Product name	Anti-NSE antibody [NSE-P1]
Description	Mouse monoclonal [NSE-P1] to NSE
Host species	Mouse
Tested applications	Suitable for: IHC-P, ELISA, WB
Species reactivity	Reacts with: Human Predicted to work with: Mouse, Rat, Chicken 
Immunogen	Synthetic peptide: LGDEARFAGHNFRNPSVL , corresponding to C terminal amino acids 416-433 of NSE Run BLAST with Run BLAST with
Positive control	Recombinant Human NSE protein (ab78797) can be used as a positive control in WB.

Properties

Form	Liquid
Storage instructions	Shipped at 4°C. Upon delivery aliquot and store at -20°C. Avoid freeze / thaw cycles.
Storage buffer	Preservative: 0.03% Thimerosal (merthiolate) Constituent: PBS
Purity	Protein G purified
Clonality	Monoclonal
Clone number	NSE-P1
Isotype	IgG1

Applications

Our [Abpromise guarantee](#) covers the use of **ab24709** in the following tested applications.

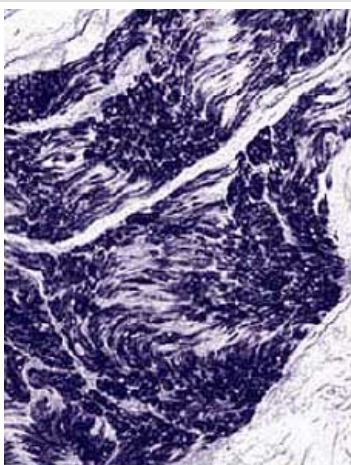
The application notes include recommended starting dilutions; optimal dilutions/concentrations should be determined by the end user.

Application	Abreviews	Notes
IHC-P		Use at an assay dependent concentration.
ELISA		1/500.
WB		1/1000. Predicted molecular weight: 47 kDa.

Target

Function	Has neurotrophic and neuroprotective properties on a broad spectrum of central nervous system (CNS) neurons. Binds, in a calcium-dependent manner, to cultured neocortical neurons and promotes cell survival.
Tissue specificity	The alpha/alpha homodimer is expressed in embryo and in most adult tissues. The alpha/beta heterodimer and the beta/beta homodimer are found in striated muscle, and the alpha/gamma heterodimer and the gamma/gamma homodimer in neurons.
Pathway	Carbohydrate degradation; glycolysis; pyruvate from D-glyceraldehyde 3-phosphate: step 4/5.
Sequence similarities	Belongs to the enolase family.
Developmental stage	During ontogenesis, there is a transition from the alpha/alpha homodimer to the alpha/beta heterodimer in striated muscle cells, and to the alpha/gamma heterodimer in nerve cells.
Cellular localization	Cytoplasm. Cell membrane. Can translocate to the plasma membrane in either the homodimeric (alpha/alpha) or heterodimeric (alpha/gamma) form.

Images



ab24709 staining peripheral nerve fibers by Immunohistochemistry (Formalin/PFA-fixed paraffin-embedded sections).

Immunohistochemistry (Formalin/PFA-fixed paraffin-embedded sections) - Anti-NSE antibody [NSE-P1] (ab24709)

Please note: All products are "FOR RESEARCH USE ONLY AND ARE NOT INTENDED FOR DIAGNOSTIC OR THERAPEUTIC USE"

Our Abpromise to you: Quality guaranteed and expert technical support

- Replacement or refund for products not performing as stated on the datasheet
- Valid for 12 months from date of delivery
- Response to your inquiry within 24 hours

- We provide support in Chinese, English, French, German, Japanese and Spanish
- Extensive multi-media technical resources to help you
- We investigate all quality concerns to ensure our products perform to the highest standards

If the product does not perform as described on this datasheet, we will offer a refund or replacement. For full details of the Abpromise, please visit <https://www.abcam.com/abpromise> or contact our technical team.

Terms and conditions

- Guarantee only valid for products bought direct from Abcam or one of our authorized distributors