

Product datasheet

Anti-NSMAF antibody ab81260

[1 References](#) [1 Image](#)

Overview

Product name	Anti-NSMAF antibody
Description	Rabbit polyclonal to NSMAF
Host species	Rabbit
Tested applications	Suitable for: WB
Species reactivity	Reacts with: Human
Immunogen	Synthetic peptide derived from human NSMAF protein.
Positive control	Human brain lysate, RMS-13 rhabdosarcoma cell lysate.
General notes	<p>Reproducibility is key to advancing scientific discovery and accelerating scientists' next breakthrough.</p> <p>Abcam is leading the way with our range of recombinant antibodies, knockout-validated antibodies and knockout cell lines, all of which support improved reproducibility.</p> <p>We are also planning to innovate the way in which we present recommended applications and species on our product datasheets, so that only applications & species that have been tested in our own labs, our suppliers or by selected trusted collaborators are covered by our Abpromise™ guarantee.</p> <p>In preparation for this, we have started to update the applications & species that this product is Abpromise guaranteed for.</p> <p>We are also updating the applications & species that this product has been “predicted to work with,” however this information is not covered by our Abpromise guarantee.</p> <p>Applications & species from publications and Abreviews that have not been tested in our own labs or in those of our suppliers are not covered by the Abpromise guarantee.</p> <p>Please check that this product meets your needs before purchasing. If you have any questions, special requirements or concerns, please send us an inquiry and/or contact our Support team ahead of purchase. Recommended alternatives for this product can be found below, as well as customer reviews and Q&As.</p>

Properties

Form	Liquid
Storage instructions	Shipped at 4°C. Upon delivery aliquot and store at -20°C or -80°C. Avoid repeated freeze / thaw cycles.

Storage buffer	Preservative: 0.08% Sodium azide Constituent: PBS
Purity	Ammonium Sulphate Precipitation
Clonality	Polyclonal
Isotype	IgG

Applications

Our [Abpromise guarantee](#) covers the use of **ab81260** in the following tested applications.

The application notes include recommended starting dilutions; optimal dilutions/concentrations should be determined by the end user.

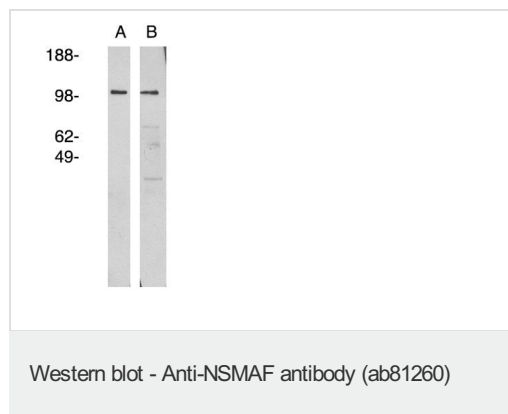
Application	Abreviews	Notes
WB		Use a concentration of 1 - 5 µg/ml. Predicted molecular weight: 104 kDa.

Target

Relevance

NSMAF is a novel adaptor protein which mediates the activation of sphingomyelinase by receptors such as tumor necrosis factor receptor type 1 and CD40 and subsequent apoptosis in cardiomyocytes. Inhibition of this factor may provide a novel intervention point for reducing ischemia/reperfusion injury.

Images



All lanes : Anti-NSMAF antibody (ab81260) at 1/400 dilution

Lane 1 : human

brain lysate

Lane 2 : RMS-13

rhabdosarcoma cell lysate

Lysates/proteins at 15 µg per lane.

Secondary

All lanes : mouse anti-rabbit HRP at 1/50000 dilution

Predicted band size: 104 kDa

Observed band size: 104 kDa

Exposure time: 5 minutes

Visualized using Pierce West Femto substrate system.

Please note: All products are "FOR RESEARCH USE ONLY. NOT FOR USE IN DIAGNOSTIC PROCEDURES"

Our Abpromise to you: Quality guaranteed and expert technical support

- Replacement or refund for products not performing as stated on the datasheet
- Valid for 12 months from date of delivery
- Response to your inquiry within 24 hours

- We provide support in Chinese, English, French, German, Japanese and Spanish
- Extensive multi-media technical resources to help you
- We investigate all quality concerns to ensure our products perform to the highest standards

If the product does not perform as described on this datasheet, we will offer a refund or replacement. For full details of the Abpromise, please visit <https://www.abcam.com/abpromise> or contact our technical team.

Terms and conditions

- Guarantee only valid for products bought direct from Abcam or one of our authorized distributors