

Product datasheet

Anti-NTH1 antibody [EPR15930] ab191413

Recombinant RabMAb

[2 References](#) [6 Images](#)

Overview

Product name	Anti-NTH1 antibody [EPR15930]
Description	Rabbit monoclonal [EPR15930] to NTH1
Host species	Rabbit
Tested applications	Suitable for: WB, IHC-P, ICC/IF
Species reactivity	Reacts with: Mouse, Rat, Human
Immunogen	Recombinant fragment within Human NTH1 aa 1-150. The exact sequence is proprietary. Database link: P78549
Positive control	Human fetal heart tissue lysate; HeLa, 293 and K562 cell lysates; Human colon, transitional cell carcinoma of bladder and mouse brain tissues; HeLa cells

General notes

This product is a recombinant monoclonal antibody, which offers several advantages including:

- High batch-to-batch consistency and reproducibility
- Improved sensitivity and specificity
- Long-term security of supply
- Animal-free production

For more information [see here](#).

Our RabMAb[®] technology is a patented hybridoma-based technology for making rabbit monoclonal antibodies. For details on our patents, please refer to [RabMAb[®] patents](#).

Reproducibility is key to advancing scientific discovery and accelerating scientists' next breakthrough.

Abcam is leading the way with our range of recombinant antibodies, knockout-validated antibodies and knockout cell lines, all of which support improved reproducibility.

We are also planning to innovate the way in which we present recommended applications and species on our product datasheets, so that only applications & species that have been tested in our own labs, our suppliers or by selected trusted collaborators are covered by our Abpromise[™] guarantee.

In preparation for this, we have started to update the applications & species that this product is Abpromise guaranteed for.

We are also updating the applications & species that this product has been "predicted to work

with," however this information is not covered by our Abpromise guarantee.

Applications & species from publications and Abreviews that have not been tested in our own labs or in those of our suppliers are not covered by the Abpromise guarantee.

Please check that this product meets your needs before purchasing. If you have any questions, special requirements or concerns, please send us an inquiry and/or contact our Support team ahead of purchase. Recommended alternatives for this product can be found below, as well as customer reviews and Q&As.

Properties

Form	Liquid
Storage instructions	Shipped at 4°C. Store at +4°C short term (1-2 weeks). Upon delivery aliquot. Store at -20°C long term. Avoid freeze / thaw cycle.
Storage buffer	pH: 7.2 Preservative: 0.01% Sodium azide Constituents: PBS, 40% Glycerol (glycerin, glycerine), 0.05% BSA
Purity	Protein A purified
Clonality	Monoclonal
Clone number	EPR15930
Isotype	IgG

Applications

Our [Abpromise guarantee](#) covers the use of **ab191413** in the following tested applications.

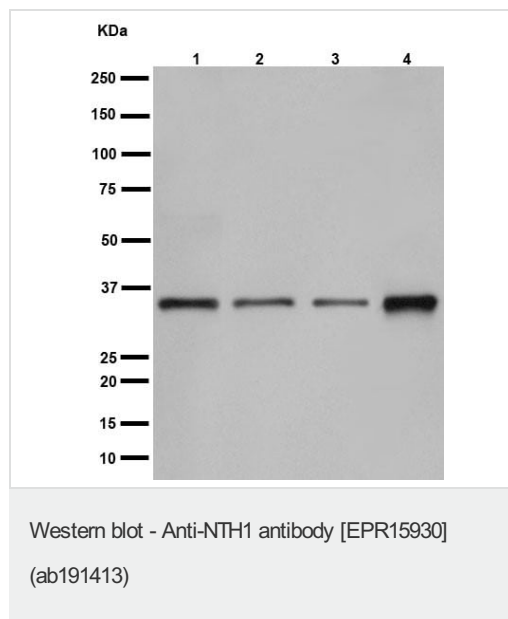
The application notes include recommended starting dilutions; optimal dilutions/concentrations should be determined by the end user.

Application	Abreviews	Notes
WB		1/1000 - 1/10000. Detects a band of approximately 34 kDa (predicted molecular weight: 34 kDa).
IHC-P		1/50 - 1/100. Perform heat mediated antigen retrieval with Tris/EDTA buffer pH 9.0 before commencing with IHC staining protocol.
ICC/IF		1/150.

Target

Function	Has both an apurinic and/or apyrimidinic endonuclease activity and a DNA N-glycosylase activity. Incises damaged DNA at cytosines, thymines and guanines. Acts on a damaged strand, 5' from the damaged site. Required for the repair of both oxidative DNA damage and spontaneous mutagenic lesions.
Tissue specificity	Widely expressed with highest levels in heart and lowest levels in lung and liver.
Sequence similarities	Belongs to the Nth/MutY family.
Developmental stage	Expression levels are regulated during the cell cycle with increased levels during early and mid S-phase.

Images



All lanes : Anti-NTH1 antibody [EPR15930] (ab191413) at 1/10000 dilution

Lane 1 : HeLa cell lysate

Lane 2 : 293 cell lysate

Lane 3 : K562 cell lysate

Lane 4 : Human fetal heart lysate

Lysates/proteins at 20 µg per lane.

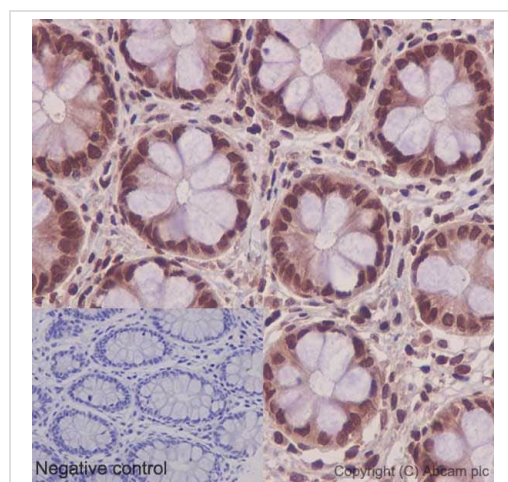
Secondary

All lanes : Goat Anti-Rabbit IgG, (H+L), Peroxidase conjugated at 1/1000 dilution

Predicted band size: 34 kDa

Observed band size: 34 kDa

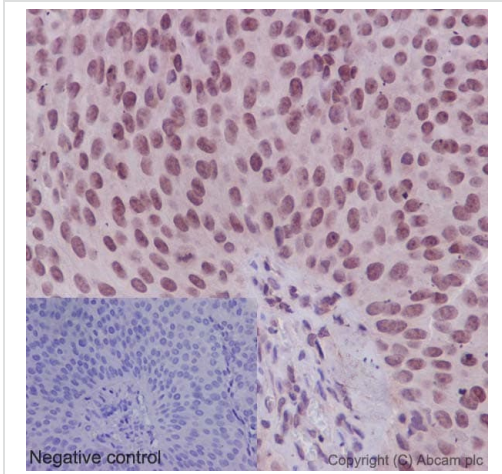
Blocking/ Dilution buffer: 5% NFDM /TBST.



Immunohistochemical analysis of paraffin-embedded human colon tissue labeling NTH1 with ab191413 at 1/100 dilution, followed by prediluted HRP Polymer for Rabbit/Mouse IgG. Counter stained with Hematoxylin.

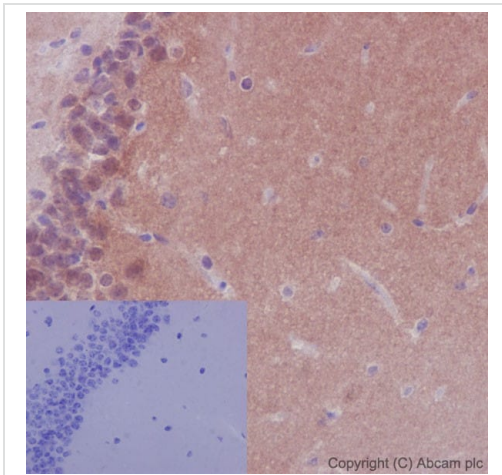
Negative control utilised PBS instead of ab191413.

Perform heat mediated antigen retrieval with Tris/EDTA buffer pH 9.0 before commencing with IHC staining protocol.



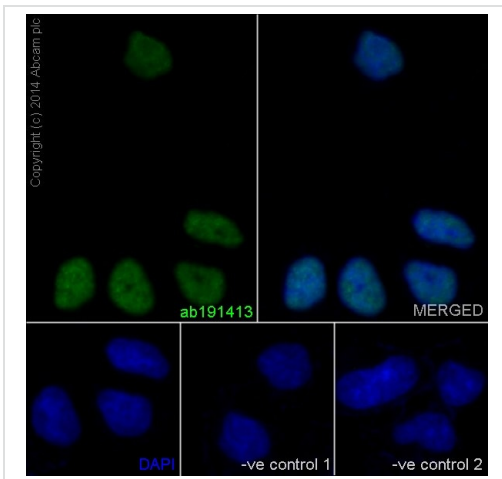
Immunohistochemistry (Formalin/PFA-fixed paraffin-embedded sections) - Anti-NTH1 antibody [EPR15930] (ab191413)

Immunohistochemical analysis of paraffin-embedded Human transitional cell carcinoma of bladder tissue labeling NTH1 with ab191413 at 1/100 dilution, followed by prediluted HRP Polymer for Rabbit/Mouse IgG. Counter stained with Hematoxylin. Negative control utilised PBS instead of ab191413. Perform heat mediated antigen retrieval with Tris/EDTA buffer pH 9.0 before commencing with IHC staining protocol.



Immunohistochemistry (Formalin/PFA-fixed paraffin-embedded sections) - Anti-NTH1 antibody [EPR15930] (ab191413)

Immunohistochemical analysis of paraffin-embedded Mouse brain tissue labeling NTH1 with ab191413 at 1/100 dilution, followed by prediluted HRP Polymer for Rabbit/Mouse IgG. Counter stained with Hematoxylin. Negative control utilised PBS instead of ab191413. Perform heat mediated antigen retrieval with Tris/EDTA buffer pH 9.0 before commencing with IHC staining protocol.



Immunocytochemistry/ Immunofluorescence - Anti-NTH1 antibody [EPR15930] (ab191413)

Immunofluorescent analysis of 4% paraformaldehyde-fixed, 0.1% tritonX-100 permeabilized HeLa cells labeling NTH1 with ab191413 at 1/150 dilution, followed by Goat anti rabbit IgG (Alexa Fluor488) secondary antibody at 1/200 dilution (ab150077). Nuclear counter stain is DAPI (blue).

The two negative controls are ab191413 at 1/250 dilution followed by Goat anti mouse IgG (Alexa Fluor®594) secondary antibody at 1/400 dilution.

Why choose a recombinant antibody?

 <p>Research with confidence Consistent and reproducible results</p>	 <p>Long-term and scalable supply Recombinant technology</p>
 <p>Success from the first experiment Confirmed specificity</p>	 <p>Ethical standards compliant Animal-free production</p>

Anti-NTH1 antibody [EPR15930] (ab191413)

Please note: All products are "FOR RESEARCH USE ONLY. NOT FOR USE IN DIAGNOSTIC PROCEDURES"

Our Abpromise to you: Quality guaranteed and expert technical support

- Replacement or refund for products not performing as stated on the datasheet

- Valid for 12 months from date of delivery
- Response to your inquiry within 24 hours

- We provide support in Chinese, English, French, German, Japanese and Spanish
- Extensive multi-media technical resources to help you
- We investigate all quality concerns to ensure our products perform to the highest standards

If the product does not perform as described on this datasheet, we will offer a refund or replacement. For full details of the Abpromise, please visit <https://www.abcam.com/abpromise> or contact our technical team.

Terms and conditions

- Guarantee only valid for products bought direct from Abcam or one of our authorized distributors