

Product datasheet

Anti-NUCB1 antibody [EPR7953] ab151705

Recombinant RabMAb

2 Images

Overview

Product name	Anti-NUCB1 antibody [EPR7953]
Description	Rabbit monoclonal [EPR7953] to NUCB1
Host species	Rabbit
Tested applications	Suitable for: WB Unsuitable for: Flow Cyt, ICC or IHC-P
Species reactivity	Reacts with: Human
Immunogen	Synthetic peptide within Human NUCB1. The exact sequence is proprietary.
Positive control	Human fetal lung, Human fetal heart and HeLa lysates.
General notes	Mouse, Rat: We have preliminary internal testing data to indicate this antibody may not react with these species. Please contact us for more information.

Previously labelled as Nucleobindin 1.

This product is a recombinant monoclonal antibody, which offers several advantages including:

- High batch-to-batch consistency and reproducibility
- Improved sensitivity and specificity
- Long-term security of supply
- Animal-free production

For more information [see here](#).

Our RabMAb[®] technology is a patented hybridoma-based technology for making rabbit monoclonal antibodies. For details on our patents, please refer to [RabMAb[®] patents](#).

We are constantly working hard to ensure we provide our customers with best in class antibodies. As a result of this work we are pleased to now offer this antibody in purified format. We are in the process of updating our datasheets. The purified format is designated 'PUR' on our product labels. If you have any questions regarding this update, please contact our Scientific Support team.

Reproducibility is key to advancing scientific discovery and accelerating scientists' next breakthrough.

Abcam is leading the way with our range of recombinant antibodies, knockout-validated antibodies and knockout cell lines, all of which support improved reproducibility.

We are also planning to innovate the way in which we present recommended applications and species on our product datasheets, so that only applications & species that have been tested in

our own labs, our suppliers or by selected trusted collaborators are covered by our Abpromise™ guarantee.

In preparation for this, we have started to update the applications & species that this product is Abpromise guaranteed for.

We are also updating the applications & species that this product has been “predicted to work with,” however this information is not covered by our Abpromise guarantee.

Applications & species from publications and Abreviews that have not been tested in our own labs or in those of our suppliers are not covered by the Abpromise guarantee.

Please check that this product meets your needs before purchasing. If you have any questions, special requirements or concerns, please send us an inquiry and/or contact our Support team ahead of purchase. Recommended alternatives for this product can be found below, as well as customer reviews and Q&As.

Properties

Form	Liquid
Storage instructions	Shipped at 4°C. Store at -20°C.
Storage buffer	pH: 7.2 Preservative: 0.01% Sodium azide Constituents: 59% PBS, 40% Glycerol (glycerin, glycerine), 0.5% BSA
Purity	Protein A purified
Clonality	Monoclonal
Clone number	EPR7953
Isotype	IgG

Applications

Our [Abpromise guarantee](#) covers the use of **ab151705** in the following tested applications.

The application notes include recommended starting dilutions; optimal dilutions/concentrations should be determined by the end user.

Application	Abreviews	Notes
WB		1/1000 - 1/10000. Predicted molecular weight: 54 kDa.

Application notes Is unsuitable for Flow Cyt, ICC or IHC-P.

Target

Function	Major calcium-binding protein of the Golgi. May have a role in calcium homeostasis.
Tissue specificity	Expressed both in fetal and adult heart, lung, liver, kidney and brain, and in adult skeletal muscle, placenta and pancreas.
Sequence similarities	Belongs to the nucleobindin family. Contains 2 EF-hand domains.
Domain	The EF-hand domains are unfolded in the absence of Ca(2+) and fold upon Ca(2+) addition.

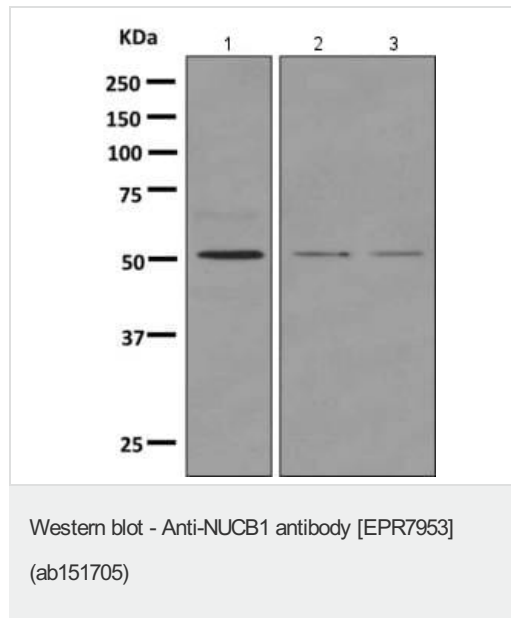
Post-translational modifications

Phosphorylated upon DNA damage, probably by ATM or ATR.

Cellular localization

Golgi apparatus > cis-Golgi network membrane. Cytoplasm. A small fraction of the protein may be cytoplasmic.

Images



All lanes : Anti-NUCB1 antibody [EPR7953] (ab151705) at 1/1000 dilution

Lane 1 : Human fetal lung tissue lysate

Lane 2 : HeLa cell lysate

Lane 3 : Human fetal heart tissue lysate

Lysates/proteins at 10 µg per lane.

Predicted band size: 54 kDa

Why choose a recombinant antibody?

- Research with confidence**
Consistent and reproducible results
- Long-term and scalable supply**
Recombinant technology
- Success from the first experiment**
Confirmed specificity
- Ethical standards compliant**
Animal-free production

Anti-NUCB1 antibody [EPR7953] (ab151705)

Please note: All products are "FOR RESEARCH USE ONLY. NOT FOR USE IN DIAGNOSTIC PROCEDURES"

Our Abpromise to you: Quality guaranteed and expert technical support

- Replacement or refund for products not performing as stated on the datasheet
- Valid for 12 months from date of delivery
- Response to your inquiry within 24 hours

- We provide support in Chinese, English, French, German, Japanese and Spanish
- Extensive multi-media technical resources to help you
- We investigate all quality concerns to ensure our products perform to the highest standards

If the product does not perform as described on this datasheet, we will offer a refund or replacement. For full details of the Abpromise, please visit <https://www.abcam.com/abpromise> or contact our technical team.

Terms and conditions

- Guarantee only valid for products bought direct from Abcam or one of our authorized distributors