

Product datasheet

Anti-Nucleoporin p62/NUP62 antibody ab226386

1 References 2 Images

Overview

Product name	Anti-Nucleoporin p62/NUP62 antibody
Description	Rabbit polyclonal to Nucleoporin p62/NUP62
Host species	Rabbit
Tested applications	Suitable for: WB, IP
Species reactivity	Reacts with: Human Predicted to work with: Chimpanzee, Cynomolgus monkey, Rhesus monkey, Gorilla, Orangutan
Immunogen	Synthetic peptide within Human Nucleoporin p62/NUP62 aa 75-125. The exact sequence is proprietary. Database link: P37198
Positive control	WB: HeLa, HEK-293T and Jurkat whole cell lysates. IP: HEK-293T whole cell lysate.
General notes	This product was previously labelled as Nucleoporin p62



Reproducibility is key to advancing scientific discovery and accelerating scientists' next breakthrough.

Abcam is leading the way with our range of recombinant antibodies, knockout-validated antibodies and knockout cell lines, all of which support improved reproducibility.

We are also planning to innovate the way in which we present recommended applications and species on our product datasheets, so that only applications & species that have been tested in our own labs, our suppliers or by selected trusted collaborators are covered by our Abpromise™ guarantee.

In preparation for this, we have started to update the applications & species that this product is Abpromise guaranteed for.

We are also updating the applications & species that this product has been “predicted to work with,” however this information is not covered by our Abpromise guarantee.

Applications & species from publications and Abreviews that have not been tested in our own labs or in those of our suppliers are not covered by the Abpromise guarantee.

Please check that this product meets your needs before purchasing. If you have any questions, special requirements or concerns, please send us an inquiry and/or contact our Support team ahead of purchase. Recommended alternatives for this product can be found below, as well as customer reviews and Q&As.

Properties

Form	Liquid
Storage instructions	Shipped at 4°C. Store at +4°C short term (1-2 weeks). Upon delivery aliquot. Store at -20°C long term. Avoid freeze / thaw cycle.
Storage buffer	pH: 7 Preservative: 0.09% Sodium azide Constituent: Tris citrate/phosphate
Purity	pH 7 to 8 Immunogen affinity purified
Purification notes	ab226386 was affinity purified using an epitope specific to Nucleoporin p62/NUP62 immobilized on solid support.
Clonality	Polyclonal
Isotype	IgG

Applications

Our [Abpromise guarantee](#) covers the use of **ab226386** in the following tested applications.

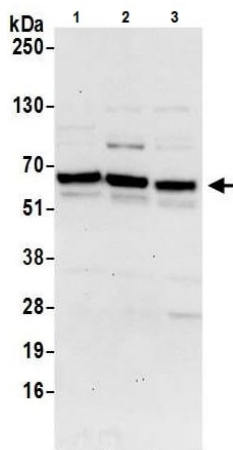
The application notes include recommended starting dilutions; optimal dilutions/concentrations should be determined by the end user.

Application	Abreviews	Notes
WB		1/2000 - 1/10000. Predicted molecular weight: 53 kDa.
IP		Use at 2-10 µg/mg of lysate.

Target

Relevance	The nuclear pore complex is a structure that extends across the nuclear envelope and regulates the flow of macromolecules between the cytoplasm and the nucleus. Nucleoporins are the main components of the nuclear pore complex in eukaryotic cells. Nup 62 is localized to the nuclear pore central plug. This protein associates with the importin alpha/beta complex which is involved in the import of proteins containing nuclear localization signals. There are multiple transcript variants of this gene, however, they encode a single protein isoform. This protein undergoes post-translational modifications. It contains about 10 N-acetylglucosamine side chain sites.
Cellular localization	Nucleus; nuclear pore complex. Cytoplasm; cytoskeleton; spindle pole. Note: Central region of the nuclear pore, within the transporter. During mitotic cell division, it associates with the poles of the mitotic spindle.

Images



Western blot - Anti-Nucleoporin p62/NUP62 antibody (ab226386)

All lanes : Anti-Nucleoporin p62/NUP62 antibody (ab226386) at 0.1 µg/ml

Lane 1 : HeLa (human epithelial cell line from cervix adenocarcinoma) whole cell lysate

Lane 2 : HEK-293T (human epithelial cell line from embryonic kidney transformed with large T antigen) whole cell lysate

Lane 3 : Jurkat (human T cell leukemia cell line from peripheral blood) whole cell lysate

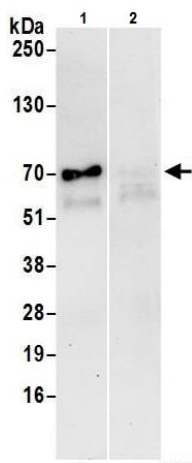
Lysates/proteins at 50 µg per lane.

Developed using the ECL technique.

Predicted band size: 53 kDa

Exposure time: 30 seconds

Lysates prepared using NETN lysis buffer.



Immunoprecipitation - Anti-Nucleoporin p62/NUP62 antibody (ab226386)

Nucleoporin p62/NUP62 was immunoprecipitated from HEK-293T (human epithelial cell line from embryonic kidney transformed with large T antigen) whole cell lysate (prepared using NETN lysis buffer; 1 mg for IP, 20% of IP loaded) with ab226386 at 6 µg/mg lysate. Western blot was performed from the immunoprecipitate using ab226386 at 0.4 µg/ml.

Lane 1: ab226386 IP in HEK-293T whole cell lysate.

Lane 2: Control IgG IP in HEK-293T whole cell lysate.

Detection: Chemiluminescence with exposure time of 30 seconds.

Please note: All products are "FOR RESEARCH USE ONLY. NOT FOR USE IN DIAGNOSTIC PROCEDURES"

Our Abpromise to you: Quality guaranteed and expert technical support

- Replacement or refund for products not performing as stated on the datasheet

- Valid for 12 months from date of delivery
- Response to your inquiry within 24 hours

- We provide support in Chinese, English, French, German, Japanese and Spanish
- Extensive multi-media technical resources to help you
- We investigate all quality concerns to ensure our products perform to the highest standards

If the product does not perform as described on this datasheet, we will offer a refund or replacement. For full details of the Abpromise, please visit <https://www.abcam.com/abpromise> or contact our technical team.

Terms and conditions

- Guarantee only valid for products bought direct from Abcam or one of our authorized distributors