

Product datasheet

Anti-Nuf2 antibody ab230313

3 Images

Overview

<b>Product name</b>	Anti-Nuf2 antibody
<b>Description</b>	Rabbit polyclonal to Nuf2
<b>Host species</b>	Rabbit
<b>Tested applications</b>	<b>Suitable for:</b> IHC-P, WB
<b>Species reactivity</b>	<b>Reacts with:</b> Mouse, Human
<b>Immunogen</b>	Recombinant fragment corresponding to Human Nuf2 aa 165-464.

Sequence:

KLERLDSVPVEEQEEFKQLSDGIQELQQSLNQDFHQK  
 TMLQEGNSQKKS  
 NISEKTKRLNELKLSVVSLKEIQESLTKIVDSPEKLNKY  
 KEKMKDTVQK  
 LKNARQEVVEKYEYGDSDCLPSCQLEVQLYQKKIQD  
 LSDNREKLASIL  
 KESLNLEDQIESDESELKKLKTEENSFKRLMMVKEKL  
 ATAQFKINKKHE  
 DVKQYKRTVIEDCNKVQEKRGAVYERVTTINQEIQKIKL  
 GIQLKDAAER  
 EKLKSQEIFLNLKTALEKYHDGIEKAAEDSYAKIDEKTA  
 ELKRKMFKMST

Database link: [Q9BZD4](#)

 [Run BLAST with](#)

 [Run BLAST with](#)

<b>Positive control</b>	WB: Mouse liver lysate; Jurkat, A431, PC-3, HEK-293T, HeLa and HepG2 whole cell lysate ( <a href="#">ab7900</a> ). IHC-P: Human liver and skeletal muscle tissues.
-------------------------	--

Properties

<b>Form</b>	Liquid
<b>Storage instructions</b>	Shipped at 4°C. Store at +4°C short term (1-2 weeks). Upon delivery aliquot. Store at -20°C long term. Avoid freeze / thaw cycle.
<b>Storage buffer</b>	pH: 7.30 Preservative: 0.02% Sodium azide Constituents: PBS, 50% Glycerol

<b>Purity</b>	Immunogen affinity purified
<b>Clonality</b>	Polyclonal
<b>Isotype</b>	IgG

## Applications

Our [Abpromise guarantee](#) covers the use of **ab230313** in the following tested applications.

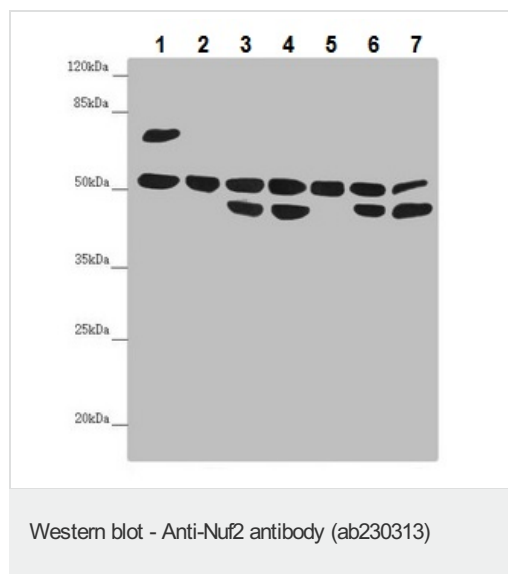
The application notes include recommended starting dilutions; optimal dilutions/concentrations should be determined by the end user.

Application	Abreviews	Notes
IHC-P		1/20 - 1/200.
WB		1/1000 - 1/5000. Predicted molecular weight: 54 kDa.

## Target

<b>Function</b>	Acts as a component of the essential kinetochore-associated NDC80 complex, which is required for chromosome segregation and spindle checkpoint activity. Required for kinetochore integrity and the organization of stable microtubule binding sites in the outer plate of the kinetochore.
<b>Sequence similarities</b>	Belongs to the NUF2 family.
<b>Post-translational modifications</b>	Can be phosphorylated by AURKA and AURKB.
<b>Cellular localization</b>	Nucleus. Chromosome > centromere > kinetochore. Localizes to kinetochores from late prophase to anaphase. Localizes specifically to the outer plate of the kinetochore.

## Images



**All lanes :** Anti-Nuf2 antibody (ab230313) at 1/1000 dilution

**Lane 1 :** Mouse liver lysate

**Lane 2 :** Jurkat (Human T cell leukemia cell line from peripheral blood) whole cell lysate

**Lane 3 :** A431 (Human epidermoid carcinoma cell line) whole cell lysate

**Lane 4 :** PC-3 (Human prostate adenocarcinoma cell line) whole cell lysate

**Lane 5 :** HEK-293T (Human epithelial cell line from embryonic kidney transformed with large T antigen) whole cell lysate

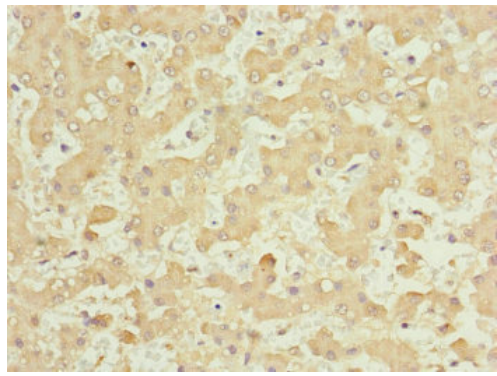
**Lane 6 :** HeLa (Human epithelial cell line from cervix adenocarcinoma) whole cell lysate

**Lane 7 :** HepG2 (Human liver hepatocellular carcinoma cell line) whole cell lysate

## Secondary

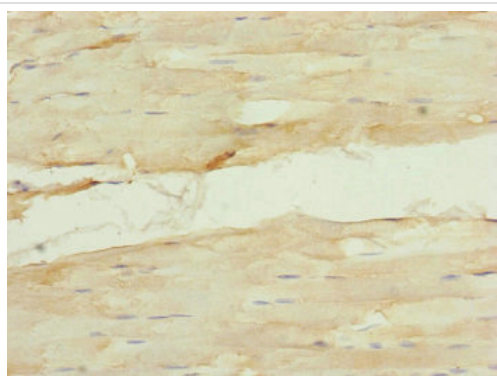
**All lanes :** Goat polyclonal to rabbit IgG at 1/10000 dilution

**Predicted band size:** 54 kDa



Immunohistochemistry (Formalin/PFA-fixed paraffin-embedded sections) - Anti-Nuf2 antibody (ab230313)

Paraffin-embedded human liver tissue stained for Nuf2 using ab230313 at 1/100 dilution in immunohistochemical analysis.



Immunohistochemistry (Formalin/PFA-fixed paraffin-embedded sections) - Anti-Nuf2 antibody (ab230313)

Paraffin-embedded human skeletal muscle tissue stained for Nuf2 using ab230313 at 1/100 dilution in immunohistochemical analysis.

**Please note:** All products are "FOR RESEARCH USE ONLY. NOT FOR USE IN DIAGNOSTIC PROCEDURES"

## Our Abpromise to you: Quality guaranteed and expert technical support

---

- Replacement or refund for products not performing as stated on the datasheet
- Valid for 12 months from date of delivery
- Response to your inquiry within 24 hours
- We provide support in Chinese, English, French, German, Japanese and Spanish
- Extensive multi-media technical resources to help you
- We investigate all quality concerns to ensure our products perform to the highest standards

If the product does not perform as described on this datasheet, we will offer a refund or replacement. For full details of the Abpromise, please visit <https://www.abcam.com/abpromise> or contact our technical team.

## Terms and conditions

---

- Guarantee only valid for products bought direct from Abcam or one of our authorized distributors