




Product datasheet

Anti-NXN/NRX antibody ab211336

1 Image

Overview

<b>Product name</b>	Anti-NXN/NRX antibody
<b>Description</b>	Rabbit polyclonal to NXN/NRX
<b>Host species</b>	Rabbit
<b>Tested applications</b>	<b>Suitable for:</b> IP <b>Unsuitable for:</b> WB
<b>Species reactivity</b>	<b>Reacts with:</b> Human <b>Predicted to work with:</b> Rabbit, Dog, Chimpanzee 
<b>Immunogen</b>	Synthetic peptide within Human NXN/NRX aa 1-50 (N terminal). The exact sequence is proprietary. Sequence: MQELRNSLKL WNKYRISNIP SLIFLDATTG KVVCRNGLLV IRDDPEGLEF  Database link: <a href="#">Q6DKJ4-2</a>   <a href="#">Run BLAST with</a>  <a href="#">Run BLAST with</a>
<b>Positive control</b>	293T whole cell lysate.
<b>General notes</b>	This product was previously labelled as NXN

Properties

<b>Form</b>	Liquid
<b>Storage instructions</b>	Shipped at 4°C. Store at +4°C short term (1-2 weeks). Upon delivery aliquot. Store at -20°C long term. Avoid freeze / thaw cycle.
<b>Storage buffer</b>	Preservative: 0.09% Sodium azide Constituent: 99% Tris citrate/phosphate  pH 7 to 8
<b>Purity</b>	Immunogen affinity purified
<b>Purification notes</b>	ab211336 was affinity purified using an epitope specific to NXN/NRX immobilized on solid support.

<b>Clonality</b>	Polyclonal
<b>Isotype</b>	IgG

## Applications

Our [Abpromise guarantee](#) covers the use of **ab211336** in the following tested applications.

The application notes include recommended starting dilutions; optimal dilutions/concentrations should be determined by the end user.

Application	Abreviews	Notes
IP		Use at 2-10 µg/mg of lysate.

**Application notes**                      Is unsuitable for WB.

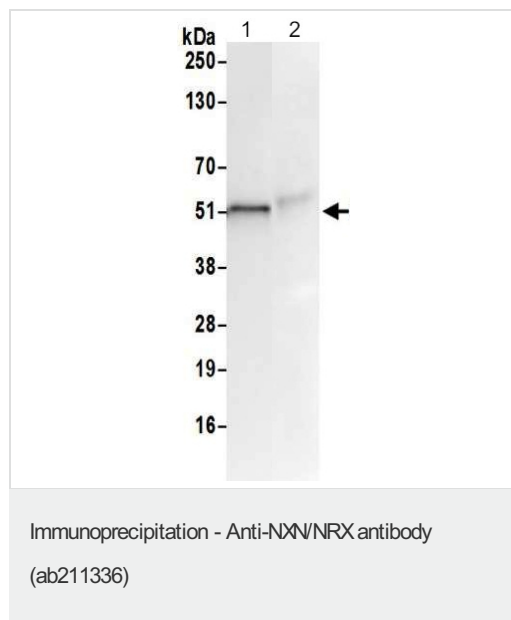
## Target

**Function**                                      Functions as a redox-dependent negative regulator of the Wnt signaling pathway. May function as a transcriptional regulator. May regulate phosphatase 2A.

**Sequence similarities**                      Belongs to the nucleoredoxin family.  
Contains 1 thioredoxin domain.

**Cellular localization**                      Cytoplasm > cytosol. Nucleus.

## Images



Detection of NXN/NRX in Immunoprecipitates of 293T whole cell lysates (0.5 or 1.0 mg for IP, 20% of IP loaded) using ab211336 at 6 µg/mg lysate for IP (Lane 1). For WB detection an anti-NXN/NRX antibody was used at 1µg/ml. Lane 2 Control IgG IP. Detection: Chemiluminescence with an exposure time of 75 seconds.

**Please note:** All products are "FOR RESEARCH USE ONLY. NOT FOR USE IN DIAGNOSTIC PROCEDURES"

**Our Abpromise to you: Quality guaranteed and expert technical support**

- Replacement or refund for products not performing as stated on the datasheet
- Valid for 12 months from date of delivery
- Response to your inquiry within 24 hours
  
- We provide support in Chinese, English, French, German, Japanese and Spanish
- Extensive multi-media technical resources to help you
- We investigate all quality concerns to ensure our products perform to the highest standards

If the product does not perform as described on this datasheet, we will offer a refund or replacement. For full details of the Abpromise, please visit <https://www.abcam.com/abpromise> or contact our technical team.

### **Terms and conditions**

---

- Guarantee only valid for products bought direct from Abcam or one of our authorized distributors