

Product datasheet

Anti-Ogg1 antibody ab233214

4 Images

Overview

<b>Product name</b>	Anti-Ogg1 antibody
<b>Description</b>	Rabbit polyclonal to Ogg1
<b>Host species</b>	Rabbit
<b>Tested applications</b>	<b>Suitable for:</b> IHC-P, WB
<b>Species reactivity</b>	<b>Reacts with:</b> Human, Pig
<b>Immunogen</b>	<p>Recombinant fragment (His-T7-tag) corresponding to Human Ogg1 aa 31-345. (Expressed in E.coli).</p> <p>Sequence:</p> <p>SELRLDLVLPSSGQSFWRREQSPAHWGVLADQVWTLTQ            TEEQLHCTVYRG            DKSQASRPTPDELEAVRKYFQLDVTLAQLYHHWGSVDSH            FQEVAQKFQGV            RLLRQDPIECLFSFICSSNNNIARITGMVERLCQAFGPRLIQ            LDDVTYHG            FPSLQALAGPEVEAHLRKLGLGYRARYVSASARAILEEQG            GLAWLQQLRE            SSYEEAHKALCILPGVGTKVADCICLMALDKPQAVPVDVH            MWHIAQRDYS            WHPTTSQAKGSPSPQTNKELGNFFRSLWGPYAGWAQAVL            FSADLRQSRHAQ EPPAKRRKGSKGPEG</p>

Database link: [O15527](#)

 [Run BLAST with](#)

 [Run BLAST with](#)

**Positive control** WB: Pig heart and kidney lysate; Recombinant human Ogg1 protein. IHC-P: Human brain and liver tissue.

**General notes**

Reproducibility is key to advancing scientific discovery and accelerating scientists' next breakthrough.

Abcam is leading the way with our range of recombinant antibodies, knockout-validated antibodies and knockout cell lines, all of which support improved reproducibility.

We are also planning to innovate the way in which we present recommended applications and species on our product datasheets, so that only applications & species that have been tested in our own labs, our suppliers or by selected trusted collaborators are covered by our Abpromise™ guarantee.

In preparation for this, we have started to update the applications & species that this product is Abpromise guaranteed for.

We are also updating the applications & species that this product has been “predicted to work with,” however this information is not covered by our Abpromise guarantee.

Applications & species from publications and Abreviews that have not been tested in our own labs or in those of our suppliers are not covered by the Abpromise guarantee.

Please check that this product meets your needs before purchasing. If you have any questions, special requirements or concerns, please send us an inquiry and/or contact our Support team ahead of purchase. Recommended alternatives for this product can be found below, as well as customer reviews and Q&As.

## Properties

---

<b>Form</b>	Liquid
<b>Storage instructions</b>	Shipped at 4°C. Store at +4°C short term (1-2 weeks). Upon delivery aliquot. Store at -20°C long term. Avoid freeze / thaw cycle.
<b>Storage buffer</b>	pH: 7.40 Preservative: 0.02% Sodium azide Constituents: PBS, 50% Glycerol
<b>Purity</b>	Immunogen affinity purified
<b>Purification notes</b>	Antigen-specific affinity chromatography followed by Protein A affinity chromatography.
<b>Clonality</b>	Polyclonal
<b>Isotype</b>	IgG

## Applications

---

Our [Abpromise guarantee](#) covers the use of **ab233214** in the following tested applications.

The application notes include recommended starting dilutions; optimal dilutions/concentrations should be determined by the end user.

Application	Abreviews	Notes
IHC-P		Use a concentration of 5 - 20 µg/ml.
WB		Use a concentration of 0.2 - 2 µg/ml. Predicted molecular weight: 39 kDa.

---

## Target

---

<b>Function</b>	DNA repair enzyme that incises DNA at 8-oxoG residues. Excises 7,8-dihydro-8-oxoguanine and 2,6-diamino-4-hydroxy-5-N-methylformamidopyrimidine (FAPY) from damaged DNA. Has a beta-lyase activity that nicks DNA 3' to the lesion.
<b>Tissue specificity</b>	Ubiquitous.
<b>Involvement in disease</b>	Defects in OGG1 may be a cause of renal cell carcinoma (RCC) [MIM:144700]. It is a heterogeneous group of sporadic or hereditary carcinoma derived from cells of the proximal renal tubular epithelium. It is subclassified into clear cell renal carcinoma (non-papillary carcinoma),

papillary renal cell carcinoma, chromophobe renal cell carcinoma, collecting duct carcinoma with medullary carcinoma of the kidney, and unclassified renal cell carcinoma.

**Sequence similarities**

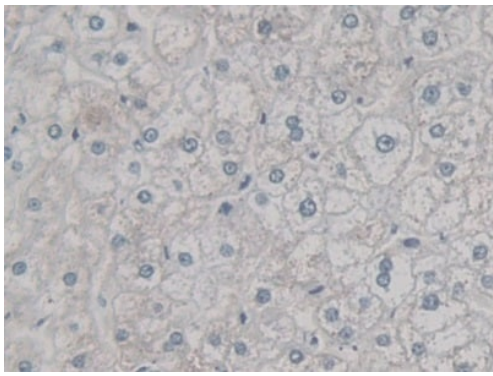
Belongs to the type-1 OGG1 family.

**Cellular localization**

Mitochondrion; Nucleus and Nucleus > nucleoplasm. Nucleus speckle. Nucleus matrix. Together with APEX1 is recruited to nuclear speckles in UVA-irradiated cells.

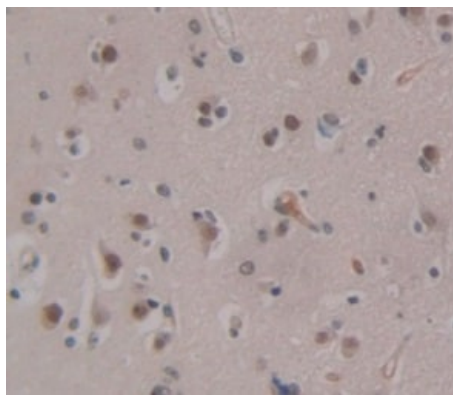
---

**Images**



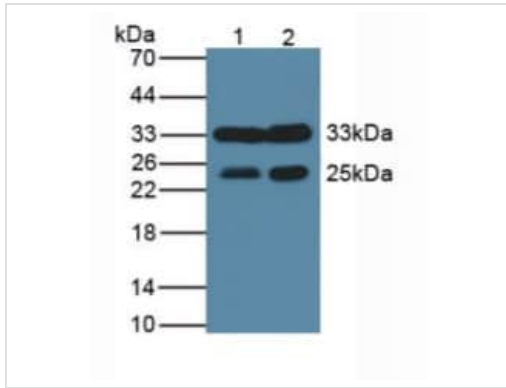
Formalin-fixed, paraffin-embedded human liver tissue stained for Ogg1 using ab233214 at 30 µg/mL in immunohistochemical analysis. DAB staining.

Immunohistochemistry (Formalin/PFA-fixed paraffin-embedded sections) - Anti-Ogg1 antibody (ab233214)



Formalin-fixed, paraffin-embedded human brain tissue stained for Ogg1 using ab233214 at 20 µg/mL in immunohistochemical analysis. DAB staining.

Immunohistochemistry (Formalin/PFA-fixed paraffin-embedded sections) - Anti-Ogg1 antibody (ab233214)



Western blot - Anti-Ogg1 antibody (ab233214)

**All lanes :** Anti-Ogg1 antibody (ab233214) at 2 µg/ml

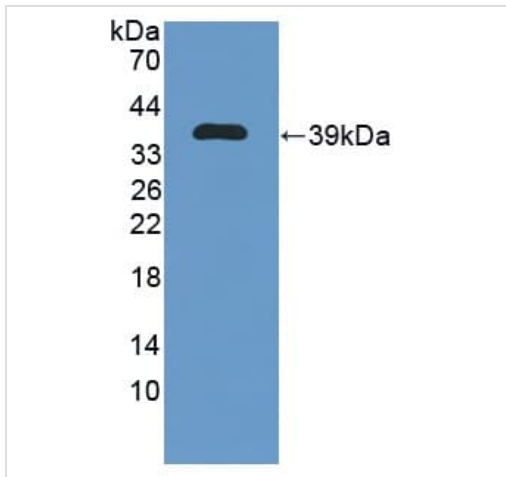
**Lane 1 :** Pig heart lysate

**Lane 2 :** Pig kidney lysate

**Secondary**

**All lanes :** HRP-Linked Guinea pig anti-rabbit at 1/1000 dilution

**Predicted band size:** 39 kDa



Western blot - Anti-Ogg1 antibody (ab233214)

Anti-Ogg1 antibody (ab233214) at 2 µg/ml + Recombinant human Ogg1 protein

**Predicted band size:** 39 kDa

**Please note:** All products are "FOR RESEARCH USE ONLY. NOT FOR USE IN DIAGNOSTIC PROCEDURES"

### Our Abpromise to you: Quality guaranteed and expert technical support

- Replacement or refund for products not performing as stated on the datasheet
- Valid for 12 months from date of delivery
- Response to your inquiry within 24 hours
- We provide support in Chinese, English, French, German, Japanese and Spanish
- Extensive multi-media technical resources to help you
- We investigate all quality concerns to ensure our products perform to the highest standards

If the product does not perform as described on this datasheet, we will offer a refund or replacement. For full details of the Abpromise, please visit <https://www.abcam.com/abpromise> or contact our technical team.

## Terms and conditions

---

- Guarantee only valid for products bought direct from Abcam or one of our authorized distributors