

Product datasheet

Anti-ORC4L antibody ab235514

2 Images

Overview

Product name	Anti-ORC4L antibody
Description	Rabbit polyclonal to ORC4L
Host species	Rabbit
Tested applications	Suitable for: WB, IHC-P
Species reactivity	Reacts with: Human Predicted to work with: Rat, Cow, Orangutan
Immunogen	<p>Recombinant fragment corresponding to Human ORC4L aa 187-436. Sequence:</p> <pre>IAVIGLTCRLDILELLEKRVKSRFShrQIhLMNSFGFPQYVKI FKEQLSL PAEFPDKVFAEKWNENVQYLSEDRSVQEVLQKHFNISKN LRSLHMLLMLA LNRVTASHPFMTAVDLMEASQLCSMDSKANIVHGLSVLEI CLIAMKHLN DIYEEEPFNFMVYNEFQKFVQRKAHSVYNFEKPVVMKA FEHLQQLELIK PMERTSGNSQREYQLMKLLLDNTQIMNALQKYPNCPTDV RQWATSSLSWL</pre> <p>Database link: O43929</p> <p style="text-align: right;"> Run BLAST with Run BLAST with </p>
Positive control	WB: HeLa, Jurkat and A549 whole cell lysates. IHC-P: Human placenta tissue.
General notes	<p>Reproducibility is key to advancing scientific discovery and accelerating scientists' next breakthrough.</p> <p>Abcam is leading the way with our range of recombinant antibodies, knockout-validated antibodies and knockout cell lines, all of which support improved reproducibility.</p> <p>We are also planning to innovate the way in which we present recommended applications and species on our product datasheets, so that only applications & species that have been tested in our own labs, our suppliers or by selected trusted collaborators are covered by our Abpromise™ guarantee.</p> <p>In preparation for this, we have started to update the applications & species that this product is Abpromise guaranteed for.</p>

We are also updating the applications & species that this product has been “predicted to work with,” however this information is not covered by our Abpromise guarantee.

Applications & species from publications and Abreviews that have not been tested in our own labs or in those of our suppliers are not covered by the Abpromise guarantee.

Please check that this product meets your needs before purchasing. If you have any questions, special requirements or concerns, please send us an inquiry and/or contact our Support team ahead of purchase. Recommended alternatives for this product can be found below, as well as customer reviews and Q&As.

Properties

Form	Liquid
Storage instructions	Shipped at 4°C. Store at +4°C short term (1-2 weeks). Upon delivery aliquot. Store at -20°C long term. Avoid freeze / thaw cycle.
Storage buffer	pH: 7.30 Preservative: 0.02% Sodium azide Constituents: PBS, 50% Glycerol (glycerin, glycerine)
Purity	Immunogen affinity purified
Clonality	Polyclonal
Isotype	IgG

Applications

Our [Abpromise guarantee](#) covers the use of **ab235514** in the following tested applications.

The application notes include recommended starting dilutions; optimal dilutions/concentrations should be determined by the end user.

Application	Abreviews	Notes
WB		1/200 - 1/1000. Predicted molecular weight: 50 kDa.
IHC-P		1/20 - 1/200.

Target

Function Component of the origin recognition complex (ORC) that binds origins of replication. DNA-binding is ATP-dependent, however specific DNA sequences that define origins of replication have not been identified so far. ORC is required to assemble the pre-replication complex necessary to initiate DNA replication.

Involvement in disease Defects in ORC4 are the cause of Meier-Gorlin syndrome type 2 (MGORS2) [MIM:613800]. MGORS2 is a syndrome characterized by bilateral microtia, aplasia/hypoplasia of the patellae, and severe intrauterine and postnatal growth retardation with short stature and poor weight gain. Additional clinical findings include anomalies of cranial sutures, microcephaly, apparently low-set and simple ears, microstomia, full lips, highly arched or cleft palate, micrognathia, genitourinary tract anomalies, and various skeletal anomalies. While almost all cases have primordial dwarfism with substantial prenatal and postnatal growth retardation, not all cases have microcephaly, and

microtia and absent/hypoplastic patella are absent in some. Despite the presence of microcephaly, intellect is usually normal.

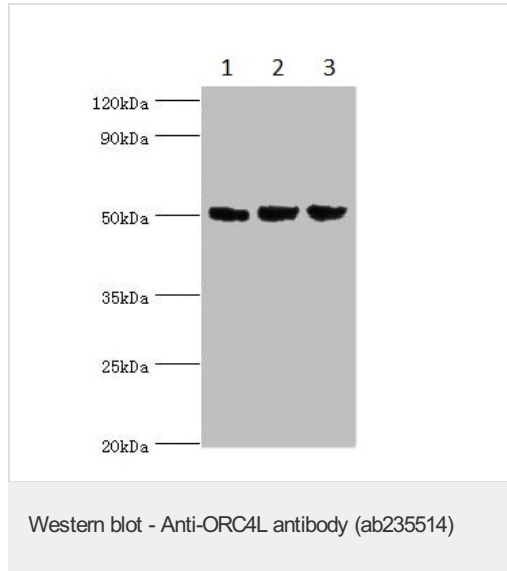
Sequence similarities

Belongs to the ORC4 family.

Cellular localization

Nucleus.

Images



All lanes : Anti-ORC4L antibody (ab235514) at 1/200 dilution

Lane 1 : HeLa (human epithelial cell line from cervix adenocarcinoma) whole cell lysate

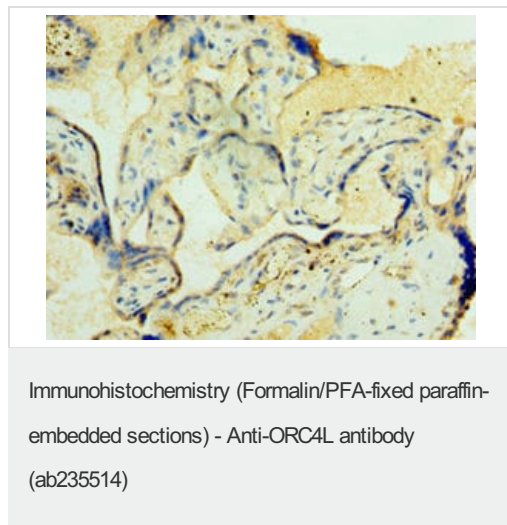
Lane 2 : Jurkat (human T cell leukemia cell line from peripheral blood) whole cell lysate

Lane 3 : A549 (human lung carcinoma cell line) whole cell lysate

Secondary

All lanes : Goat polyclonal to rabbit IgG at 1/10000 dilution

Predicted band size: 50 kDa



Paraffin-embedded human placenta tissue stained for ORC4L using ab235514 at 1/100 dilution in immunohistochemical analysis.

Please note: All products are "FOR RESEARCH USE ONLY. NOT FOR USE IN DIAGNOSTIC PROCEDURES"

Our Abpromise to you: Quality guaranteed and expert technical support

- Replacement or refund for products not performing as stated on the datasheet
- Valid for 12 months from date of delivery
- Response to your inquiry within 24 hours
- We provide support in Chinese, English, French, German, Japanese and Spanish

- Extensive multi-media technical resources to help you
- We investigate all quality concerns to ensure our products perform to the highest standards

If the product does not perform as described on this datasheet, we will offer a refund or replacement. For full details of the Abpromise, please visit <https://www.abcam.com/abpromise> or contact our technical team.

Terms and conditions

- Guarantee only valid for products bought direct from Abcam or one of our authorized distributors