


Product datasheet

Anti-OS9 antibody ab19853

★★★★★ 9 Abreviews 9 References 3 Images

Overview

Product name	Anti-OS9 antibody
Description	Rabbit polyclonal to OS9
Host species	Rabbit
Tested applications	Suitable for: IHC-P, WB, ICC/IF
Species reactivity	Reacts with: Mouse, Human Predicted to work with: Rat, Dog 
Immunogen	Synthetic peptide conjugated to KLH derived from within residues 600 to the C-terminus of Human OS9. Read Abcam's proprietary immunogen policy (Peptide available as ab23317 .)
General notes	<p>The Life Science industry has been in the grips of a reproducibility crisis for a number of years. Abcam is leading the way in addressing this with our range of recombinant monoclonal antibodies and knockout edited cell lines for gold-standard validation. Please check that this product meets your needs before purchasing.</p> <p>If you have any questions, special requirements or concerns, please send us an inquiry and/or contact our Support team ahead of purchase. Recommended alternatives for this product can be found below, along with publications, customer reviews and Q&As</p>

Properties

Form	Liquid
Storage instructions	Shipped at 4°C. Store at +4°C short term (1-2 weeks). Upon delivery aliquot. Store at -20°C or -80°C. Avoid freeze / thaw cycle.
Storage buffer	pH: 7.40 Preservative: 0.02% Sodium azide Constituent: PBS Batches of this product that have a concentration < 1mg/ml may have BSA added as a stabilising agent. If you would like information about the formulation of a specific lot, please contact our scientific support team who will be happy to help.
Purity	Immunogen affinity purified
Clonality	Polyclonal
Isotype	IgG

Applications

The Abpromise guarantee

Our [Abpromise guarantee](#) covers the use of ab19853 in the following tested applications.

The application notes include recommended starting dilutions; optimal dilutions/concentrations should be determined by the end user.

Application	Abreviews	Notes
IHC-P	★★★★★ (1)	Use a concentration of 1 µg/ml.
WB	★★★★★ (5)	Use a concentration of 1 µg/ml. Detects a band of approximately 76 kDa (predicted molecular weight: 76 kDa).
ICC/IF	★★★☆☆ (1)	Use a concentration of 5 µg/ml.

Target

Function

Lectin which functions in endoplasmic reticulum (ER) quality control and ER-associated degradation (ERAD). May bind terminally misfolded non-glycosylated proteins as well as improperly folded glycoproteins, retain them in the ER, and possibly transfer them to the ubiquitination machinery and promote their degradation. Possible targets include TRPV4.

Tissue specificity

Ubiquitously expressed. Found as well in all tumor cell lines analyzed, amplified in sarcomas. Highly expressed in osteosarcoma OSA-CL and rhabdomyosarcoma RH30 cell lines. Isoform 2 is the major isoform detected in all cell types examined.

Sequence similarities

Belongs to the OS-9 family.
Contains 1 PRKCSH domain.

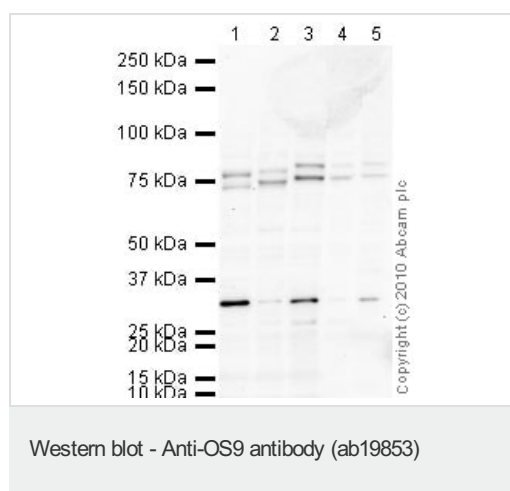
Post-translational modifications

Intramolecular disulfide bonds.
Isoform 1 and isoform 2 are N-glycosylated.

Cellular localization

Endoplasmic reticulum lumen.

Images



All lanes : Anti-OS9 antibody (ab19853) at 1 µg/ml

Lane 1 : HeLa (Human epithelial carcinoma cell line) Whole Cell Lysate

Lane 2 : HEK293 (Human embryonic kidney cell line) Whole Cell Lysate

Lane 3 : NIH 3T3 (Mouse embryonic fibroblast cell line) Whole Cell Lysate

Lane 4 : Spleen (Mouse) Tissue Lysate

Lane 5 : Liver (Mouse) Tissue Lysate

Lysates/proteins at 20 µg per lane.

Secondary

All lanes : Goat polyclonal to Rabbit IgG - H&L - Pre-Adsorbed (HRP) at 1/3000 dilution

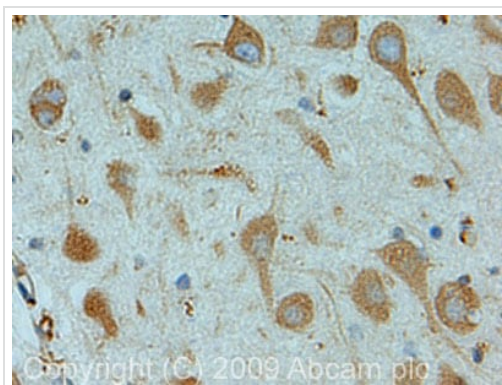
Performed under reducing conditions.

Predicted band size: 76 kDa

Observed band size: 76 kDa

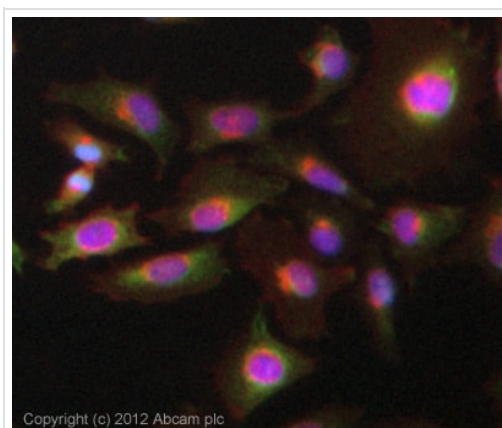
Additional bands at: 30 kDa, 74 kDa. We are unsure as to the identity of these extra bands.

Exposure time: 10 minutes



Immunohistochemistry (Formalin/PFA-fixed paraffin-embedded sections) - Anti-OS9 antibody (ab19853)

IHC image of OS9 staining in human hippocampus FFPE section, performed on a Leica Bond™ system using the standard protocol F. The section was pre-treated using heat mediated antigen retrieval with sodium citrate buffer (pH6, epitope retrieval solution 1) for 20 mins. The section was then incubated with ab19853, 1µg/ml, for 15 mins at room temperature and detected using an HRP conjugated compact polymer system. DAB was used as the chromogen. The section was then counterstained with haematoxylin and mounted with DPX.



Immunocytochemistry/ Immunofluorescence - Anti-OS9 antibody (ab19853)

ICC/IF image of ab19853 stained HeLa cells. The cells were 4% formaldehyde fixed (10 min) and then incubated in 1%BSA / 10% normal goat serum / 0.3M glycine in 0.1% PBS-Tween for 1h to permeabilise the cells and block non-specific protein-protein interactions. The cells were then incubated with the antibody (ab19853, 5µg/ml) overnight at +4°C. The secondary antibody (green) was ab96899, DyLight® 488 goat anti-rabbit IgG (H+L) used at a 1/250 dilution for 1h. Alexa Fluor® 594 WGA was used to label plasma membranes (red) at a 1/200 dilution for 1h. DAPI was used to stain the cell nuclei (blue) at a concentration of 1.43µM.

Please note: All products are "FOR RESEARCH USE ONLY. NOT FOR USE IN DIAGNOSTIC PROCEDURES"

Our Abpromise to you: Quality guaranteed and expert technical support

- Replacement or refund for products not performing as stated on the datasheet
- Valid for 12 months from date of delivery
- Response to your inquiry within 24 hours

- We provide support in Chinese, English, French, German, Japanese and Spanish
- Extensive multi-media technical resources to help you
- We investigate all quality concerns to ensure our products perform to the highest standards

If the product does not perform as described on this datasheet, we will offer a refund or replacement. For full details of the Abpromise, please visit <https://www.abcam.com/abpromise> or contact our technical team.

Terms and conditions

- Guarantee only valid for products bought direct from Abcam or one of our authorized distributors