

## Product datasheet

# Anti-OS9 antibody ab225915

4 Images

### Overview

---

<b>Product name</b>	Anti-OS9 antibody
<b>Description</b>	Rabbit polyclonal to OS9
<b>Host species</b>	Rabbit
<b>Tested applications</b>	<b>Suitable for:</b> IHC-P, WB, ICC/IF
<b>Species reactivity</b>	<b>Reacts with:</b> Human
<b>Immunogen</b>	Recombinant fragment corresponding to Human OS9 aa 232-413. Database link: <a href="#">Q13438</a>
<b>Positive control</b>	IHC-P: Human testis tissue and lung cancer tissues. WB: HepG2 and HEK-293 whole cell lysates. ICC/IF: HeLa cells.
<b>General notes</b>	<p>Reproducibility is key to advancing scientific discovery and accelerating scientists' next breakthrough.</p> <p>Abcam is leading the way with our range of recombinant antibodies, knockout-validated antibodies and knockout cell lines, all of which support improved reproducibility.</p> <p>We are also planning to innovate the way in which we present recommended applications and species on our product datasheets, so that only applications &amp; species that have been tested in our own labs, our suppliers or by selected trusted collaborators are covered by our Abpromise™ guarantee.</p> <p>In preparation for this, we have started to update the applications &amp; species that this product is Abpromise guaranteed for.</p> <p>We are also updating the applications &amp; species that this product has been "predicted to work with," however this information is not covered by our Abpromise guarantee.</p> <p>Applications &amp; species from publications and Abreviews that have not been tested in our own labs or in those of our suppliers are not covered by the Abpromise guarantee.</p> <p>Please check that this product meets your needs before purchasing. If you have any questions, special requirements or concerns, please send us an inquiry and/or contact our Support team ahead of purchase. Recommended alternatives for this product can be found below, as well as customer reviews and Q&amp;As.</p>

### Properties

---

<b>Form</b>	Liquid
-------------	--------

<b>Storage instructions</b>	Shipped at 4°C. Store at +4°C short term (1-2 weeks). Upon delivery aliquot. Store at -20°C long term. Avoid freeze / thaw cycle.
<b>Storage buffer</b>	pH: 7.40 Constituents: 50% Glycerol (glycerin, glycerine), PBS, 0.03% Proclin 300
<b>Purity</b>	Protein G purified
<b>Purification notes</b>	Purity >95%.
<b>Clonality</b>	Polyclonal
<b>Isotype</b>	IgG

## Applications

Our [Abpromise guarantee](#) covers the use of **ab225915** in the following tested applications.

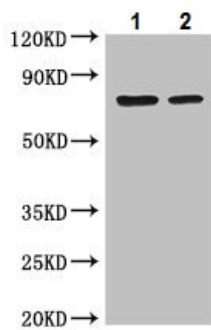
The application notes include recommended starting dilutions; optimal dilutions/concentrations should be determined by the end user.

Application	Abreviews	Notes
IHC-P		1/20 - 1/200.
WB		1/500 - 1/5000. Detects a band of approximately 76 kDa (predicted molecular weight: 76 kDa).
ICC/IF		1/50 - 1/200.

## Target

<b>Function</b>	Lectin which functions in endoplasmic reticulum (ER) quality control and ER-associated degradation (ERAD). May bind terminally misfolded non-glycosylated proteins as well as improperly folded glycoproteins, retain them in the ER, and possibly transfer them to the ubiquitination machinery and promote their degradation. Possible targets include TRPV4.
<b>Tissue specificity</b>	Ubiquitously expressed. Found as well in all tumor cell lines analyzed, amplified in sarcomas. Highly expressed in osteosarcoma OSA-CL and rhabdomyosarcoma RH30 cell lines. Isoform 2 is the major isoform detected in all cell types examined.
<b>Sequence similarities</b>	Belongs to the OS-9 family. Contains 1 PRKCSH domain.
<b>Post-translational modifications</b>	Intramolecular disulfide bonds. Isoform 1 and isoform 2 are N-glycosylated.
<b>Cellular localization</b>	Endoplasmic reticulum lumen.

## Images



Western blot - Anti-OS9 antibody (ab225915)

**All lanes :** Anti-OS9 antibody (ab225915) at 1/500 dilution

**Lane 1 :** HepG2 (human liver hepatocellular carcinoma cell line) whole cell lysate

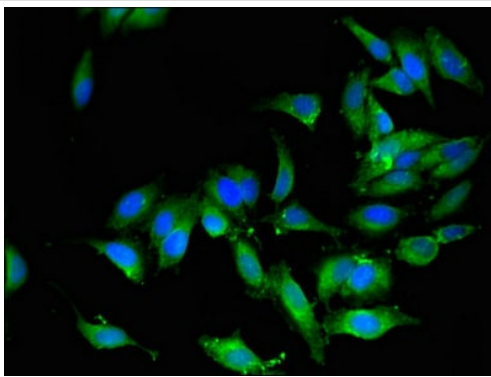
**Lane 2 :** HEK-293 (human epithelial cell line from embryonic kidney) whole cell lysate

**Secondary**

**All lanes :** Goat polyclonal to rabbit IgG at 1/50000 dilution

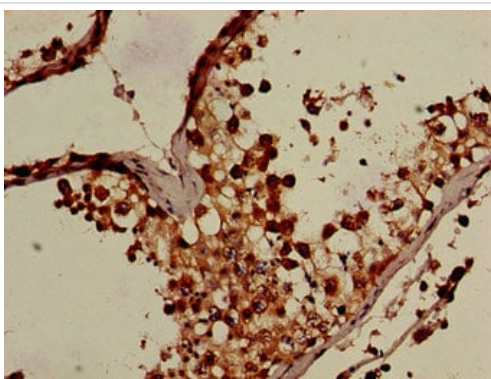
**Predicted band size:** 76 kDa

**Observed band size:** 76 kDa



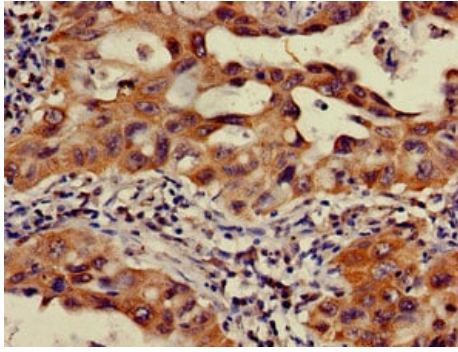
Immunocytochemistry/ Immunofluorescence - Anti-OS9 antibody (ab225915)

HeLa (human epithelial cell line from cervix adenocarcinoma) cells stained for OS9 (green) using ab225915 at 1/100 dilution in ICC/IF, followed by Alexa Fluor 488<sup>®</sup> conjugated Goat Anti-Rabbit IgG (H+L).



Immunohistochemistry (Formalin/PFA-fixed paraffin-embedded sections) - Anti-OS9 antibody (ab225915)

Paraffin-embedded human testis tissue stained for OS9 using ab225915 at 1/100 dilution in immunohistochemical analysis.



Immunohistochemistry (Formalin/PFA-fixed paraffin-embedded sections) - Anti-OS9 antibody (ab225915)

Paraffin-embedded human lung cancer tissue stained for OS9 using ab225915 at 1/100 dilution in immunohistochemical analysis.

**Please note:** All products are "FOR RESEARCH USE ONLY. NOT FOR USE IN DIAGNOSTIC PROCEDURES"

### Our Abpromise to you: Quality guaranteed and expert technical support

---

- Replacement or refund for products not performing as stated on the datasheet
- Valid for 12 months from date of delivery
- Response to your inquiry within 24 hours
- We provide support in Chinese, English, French, German, Japanese and Spanish
- Extensive multi-media technical resources to help you
- We investigate all quality concerns to ensure our products perform to the highest standards

If the product does not perform as described on this datasheet, we will offer a refund or replacement. For full details of the Abpromise, please visit <https://www.abcam.com/abpromise> or contact our technical team.

### Terms and conditions

---

- Guarantee only valid for products bought direct from Abcam or one of our authorized distributors