

Product datasheet

Anti-ospC antibody ab106083

1 Image

Overview

Product name	Anti-ospC antibody
Description	Rabbit polyclonal to ospC
Host species	Rabbit
Specificity	cross-reactivity with ospC from <i>Borrelia burgdorferi</i> , <i>afzelii</i> , and <i>valaisiana</i> sources based on 100% homology with the immunizing sequence. Partial reactivity is expected against <i>B. japonica</i> and <i>americana</i> sources based on 94% homology
Tested applications	Suitable for: WB
Species reactivity	Reacts with: Other species
Immunogen	Fusion protein corresponding to ospC. Database link: Q07337
Positive control	<i>Borrelia burgdorferi</i> ospC protein.
General notes	<p>The Life Science industry has been in the grips of a reproducibility crisis for a number of years. Abcam is leading the way in addressing this with our range of recombinant monoclonal antibodies and knockout edited cell lines for gold-standard validation. Please check that this product meets your needs before purchasing.</p> <p>If you have any questions, special requirements or concerns, please send us an inquiry and/or contact our Support team ahead of purchase. Recommended alternatives for this product can be found below, along with publications, customer reviews and Q&As</p>

Properties

Form	Liquid
Storage instructions	Shipped at 4°C. Upon delivery aliquot. Store at -20°C or -80°C. Avoid freeze / thaw cycle.
Storage buffer	Preservative: 0.01% Sodium azide Constituents: 0.42% Potassium phosphate, 0.88% Sodium chloride
Purity	Protein A purified
Purification notes	ab106083 is cross-adsorbed against MBP from monospecific antiserum by chromatography.
Clonality	Polyclonal
Isotype	IgG

Applications

The Abpromise guarantee Our [Abpromise guarantee](#) covers the use of ab106083 in the following tested applications. The application notes include recommended starting dilutions; optimal dilutions/concentrations should be determined by the end user.

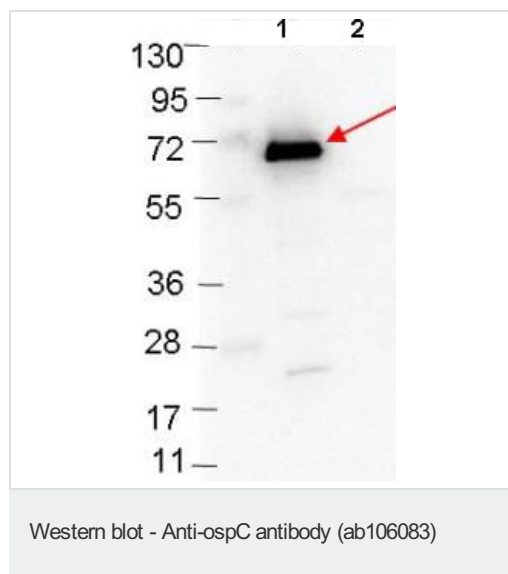
Application	Abreviews	Notes
WB		1/1000. Predicted molecular weight: 22 kDa.

Target

Relevance Outer Surface Protein C, or ospC, is a 20.7 kDa immunogenic protein on the outer surface of the spirochete *Borrelia burgdorferi*. Its function is not known, but it is located with lipid-anchoring sites on the outer cell membrane.

Cellular localization Cell outer membrane; Lipid-anchor.

Images



All lanes : Anti-ospC antibody (ab106083) at 1/1000 dilution

Lane 1 : MBP-ospC fusion protein

Lane 2 : MBP alone

Lysates/proteins at 0.1 µg per lane.

Secondary

All lanes : Goat-anti-Rabbit HRP at 1/40000 dilution

Predicted band size: 22 kDa

4-20% gel.

Please note: All products are "FOR RESEARCH USE ONLY. NOT FOR USE IN DIAGNOSTIC PROCEDURES"

Our Abpromise to you: Quality guaranteed and expert technical support

- Replacement or refund for products not performing as stated on the datasheet
- Valid for 12 months from date of delivery
- Response to your inquiry within 24 hours
- We provide support in Chinese, English, French, German, Japanese and Spanish
- Extensive multi-media technical resources to help you

- We investigate all quality concerns to ensure our products perform to the highest standards

If the product does not perform as described on this datasheet, we will offer a refund or replacement. For full details of the Abpromise, please visit <https://www.abcam.com/abpromise> or contact our technical team.

Terms and conditions

- Guarantee only valid for products bought direct from Abcam or one of our authorized distributors