

## Product datasheet

# Anti-OSTM1 antibody ab203629

[2 Images](#)

### Overview

---

<b>Product name</b>	Anti-OSTM1 antibody
<b>Description</b>	Rabbit polyclonal to OSTM1
<b>Host species</b>	Rabbit
<b>Tested applications</b>	<b>Suitable for:</b> IHC-P, WB
<b>Species reactivity</b>	<b>Reacts with:</b> Mouse, Rat, Human
<b>Immunogen</b>	Synthetic peptide within Human OSTM1 aa 32-88 conjugated to Keyhole Limpet Haemocyanin (KLH). The exact sequence is proprietary. Sequence:  ALPFGSSPHRVFHDLLSEQQLLEVEDLSLSLLQGGGLGP LSLPPDLPDL PECELL  Database link: <a href="#">Q86WC4</a>

[Run BLAST with](#)

[Run BLAST with](#)

**Positive control** Rat kidney tissue. Human colon carcinoma lysate.

**General notes**

Reproducibility is key to advancing scientific discovery and accelerating scientists' next breakthrough.

Abcam is leading the way with our range of recombinant antibodies, knockout-validated antibodies and knockout cell lines, all of which support improved reproducibility.

We are also planning to innovate the way in which we present recommended applications and species on our product datasheets, so that only applications & species that have been tested in our own labs, our suppliers or by selected trusted collaborators are covered by our Abpromise™ guarantee.

In preparation for this, we have started to update the applications & species that this product is Abpromise guaranteed for.

We are also updating the applications & species that this product has been “predicted to work with,” however this information is not covered by our Abpromise guarantee.

Applications & species from publications and Abreviews that have not been tested in our own labs or in those of our suppliers are not covered by the Abpromise guarantee.

Please check that this product meets your needs before purchasing. If you have any questions, special requirements or concerns, please send us an inquiry and/or contact our Support team ahead of purchase. Recommended alternatives for this product can be found below, as well as customer reviews and Q&As.

## Properties

---

<b>Form</b>	Liquid
<b>Storage instructions</b>	Shipped at 4°C. Store at +4°C short term (1-2 weeks). Upon delivery aliquot. Store at -20°C long term. Avoid freeze / thaw cycle.
<b>Storage buffer</b>	Preservative: 0.09% Sodium azide Constituents: 0.01% BSA, 50% Glycerol
<b>Purity</b>	Protein A purified
<b>Clonality</b>	Polyclonal
<b>Isotype</b>	IgG

## Applications

---

Our [Abpromise guarantee](#) covers the use of **ab203629** in the following tested applications.

The application notes include recommended starting dilutions; optimal dilutions/concentrations should be determined by the end user.

Application	Abreviews	Notes
IHC-P		1/100 - 1/500. When using a fluorescent probe please use dilutions of 1/50 - 1/200.
WB		1/100 - 1/1000. Predicted molecular weight: 37 kDa.

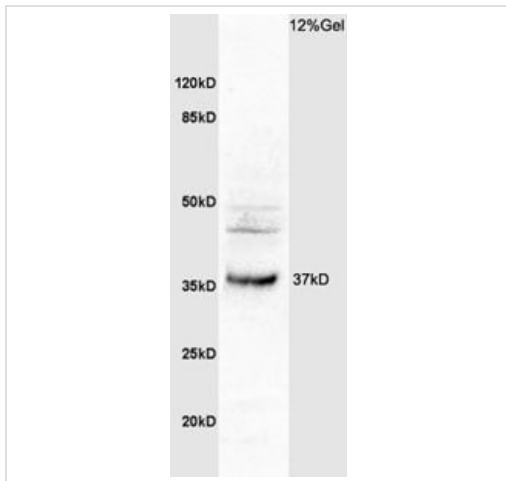
## Target

---

<b>Function</b>	Required for osteoclast and melanocyte maturation and function.
<b>Involvement in disease</b>	Defects in OSTM1 are the cause of osteopetrosis autosomal recessive type 5 (OPTB5) [MIM:259720]; also called infantile malignant osteopetrosis 3. Osteopetrosis is a rare genetic disease characterized by abnormally dense bone, due to defective resorption of immature bone. The disorder occurs in two forms: a severe autosomal recessive form occurring in utero, infancy, or childhood, and a benign autosomal dominant form occurring in adolescence or adulthood. OPTB5 patients manifest primary central nervous system involvement in addition to the classical stigmata of severe bone sclerosis, growth failure, anemia, thrombocytopenia and visual impairment with optic atrophy.
<b>Cellular localization</b>	Membrane.

## Images

---



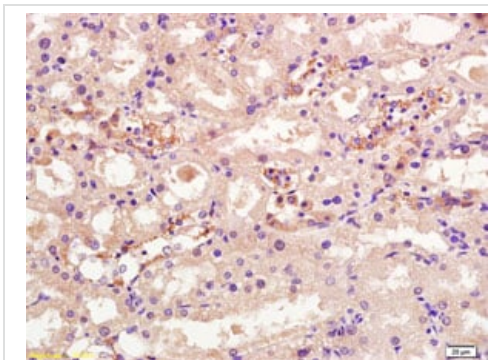
Western blot - Anti-OSTM1 antibody (ab203629)

Anti-OSTM1 antibody (ab203629) at 1/200 dilution + human colon carcinoma lysates

### Secondary

Goat Anti-Rabbit IgG Antibody (H+L), HRP Conjugated at 1/3000 dilution

**Predicted band size:** 37 kDa



Immunohistochemistry (Formalin/PFA-fixed paraffin-embedded sections) - Anti-OSTM1 antibody (ab203629)

Immunohistochemical analysis of formalin-fixed paraffin-embedded rat kidney tissue labeling OSTM1 with ab203629 at 1/200 dilution. DAB staining.

**Please note:** All products are "FOR RESEARCH USE ONLY. NOT FOR USE IN DIAGNOSTIC PROCEDURES"

### Our Abpromise to you: Quality guaranteed and expert technical support

- Replacement or refund for products not performing as stated on the datasheet
- Valid for 12 months from date of delivery
- Response to your inquiry within 24 hours
- We provide support in Chinese, English, French, German, Japanese and Spanish
- Extensive multi-media technical resources to help you
- We investigate all quality concerns to ensure our products perform to the highest standards

If the product does not perform as described on this datasheet, we will offer a refund or replacement. For full details of the Abpromise,

please visit <https://www.abcam.com/abpromise> or contact our technical team.

## **Terms and conditions**

---

- Guarantee only valid for products bought direct from Abcam or one of our authorized distributors