

Product datasheet

Oxidized LDL Assay Kit (MDA-LDL, Human) ab242302

2 Images

Overview

Product name	Oxidized LDL Assay Kit (MDA-LDL, Human)
Detection method	Colorimetric
Sample type	Serum, Plasma
Sensitivity	50 ng/ml
Species reactivity	Reacts with: Human
Product overview	Oxidized LDL Assay Kit (MDA-LDL, Human) ELISA Kit (ab242302) is developed for the detection and quantitation of oxidized phospholipids (OxPL) associated with human LDL in plasma, serum or other biological fluid samples.

The kit contains an OxLDL Standard and has a detection sensitivity limit of <15 ng/mL. Each kit provides sufficient reagents to perform up to 96 assays including standard curve and unknown samples.

Tested applications	Suitable for: ELISA
Platform	Microplate

Properties

Storage instructions Please refer to protocols.

Components	1 x 96 tests
10X Wash Buffer	1 x 100ml
Anti-MDA Antibody Coated Plate	1 unit
Assay Diluent	1 x 50ml
Biotinylated Anti-Human ApoB-100 Antibody (1000X)	1 x 20µl

Components	1 x 96 tests
Blocking Reagent (100X)	1 x 200µl
LDL Precipitation Solution (2X)	1 x 20ml
OxLDL Standard	1 x 25µl
Stop Solution	1 x 12ml
Streptavidin-Enzyme Conjugate	1 x 20µl
Substrate Solution	1 x 12ml

Relevance

Lipoproteins are submicroscopic particles composed of lipid and protein held together by noncovalent forces. Their general structure is that of a putative spheroidal microemulsion formed from an outer layer of phospholipids, unesterified cholesterol, and proteins, with a core of neutral lipids, predominately cholesteryl esters and triacylglycerols (TAG). Low density lipoprotein (LDL) is the major transport protein for cholesterol in human plasma. LDL is a spherical particle with a diameter of 20-25 nm. Each LDL particle contains cholesteryl esters in its core which are surrounded by a hydrophilic coat composed of phospholipids, cholesterol, and one molecule of a hydrophobic protein known as apolipoprotein B-100. LDL cholesterol, sometimes referred to as “bad” cholesterol, is even more dangerous when it becomes oxidized. Oxidized LDL (OxLDL) is more reactive with surrounding tissues and can collect within the inner-lining of arteries. Macrophages, cholesterol, and other lipids can accumulate at the site (atherosclerosis), ultimately forming a plaque that can lead to heart attack, stroke or death. LDL oxidation affects both the protein and phospholipids of LDL. Reactive aldehyde products formed during the oxidation of polyunsaturated fatty acids, such as malondialdehyde (MDA) and 4-hydroxynonenal (HNE), are capable of attaching covalently to the ε-amino groups of lysine residues of ApoB-100 to form MDA-Lys and HNE-Lys adducts (MDA-LDL and HNE-LDL). Advanced glycosylation, such as the formation of CML-LDL and CEL-LDL, are also involved in LDL oxidation.

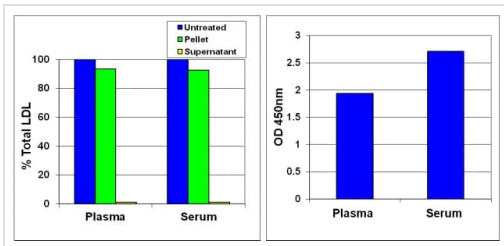
Applications

Our [Abpromise guarantee](#) covers the use of **ab242302** in the following tested applications.

The application notes include recommended starting dilutions; optimal dilutions/concentrations should be determined by the end user.

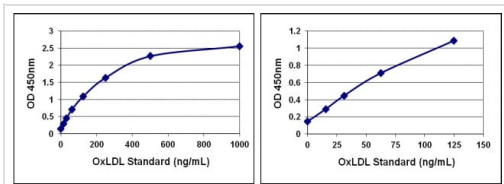
Application	Abreviews	Notes
ELISA		Use at an assay dependent concentration.

Images



Quantitation of OxLDL in Serum and Plasma Samples.

Left: LDL Recovery After Precipitation Solution. Serum and plasma samples were treated with LDL Precipitation Solution according to the Sample Preparation protocol. LDL recovery was determined. Right: OxLDL Determination of Serum and Plasma Samples. Serum and plasma samples were treated with LDL Precipitation Solution according to the Sample Preparation Section. Precipitated LDL pellets were resuspended in 1.6 mL of PBS before further diluting 1:160 in Assay Diluent. Samples were tested according to the Assay Protocol.



Human OxLDL Standard Curve.

Please note: All products are "FOR RESEARCH USE ONLY. NOT FOR USE IN DIAGNOSTIC PROCEDURES"

Our Abpromise to you: Quality guaranteed and expert technical support

- Replacement or refund for products not performing as stated on the datasheet
- Valid for 12 months from date of delivery
- Response to your inquiry within 24 hours
- We provide support in Chinese, English, French, German, Japanese and Spanish
- Extensive multi-media technical resources to help you
- We investigate all quality concerns to ensure our products perform to the highest standards

If the product does not perform as described on this datasheet, we will offer a refund or replacement. For full details of the Abpromise, please visit <https://www.abcam.com/abpromise> or contact our technical team.

Terms and conditions

- Guarantee only valid for products bought direct from Abcam or one of our authorized distributors