

Product datasheet

Anti-P Glycoprotein antibody [JSB-1] ab3366

★★★★★ 1 Abreviews 43 References 1 Image

Overview

Product name	Anti-P Glycoprotein antibody [JSB-1]
Description	Mouse monoclonal [JSB-1] to P Glycoprotein
Host species	Mouse
Specificity	This antibody is specific for the MDR1 isoform of P Glycoprotein which is only found in the plasma membrane. It does not cross-react with MDR3. It has been shown to cross-react with Pyruvate Carboxylase, an abundant mitochondrial enzyme (130 kDa), on both immunoblots and immunohistochemical tissue sections. Weak homogeneous, cytoplasmic, or granular patterns of reactivity may represent staining of the PC cross-reactive epitope rather than positive staining for P glycoprotein.
Tested applications	Suitable for: IHC-P
Species reactivity	Reacts with: Human
Immunogen	Multidrug-resistant Chinese hamster ovary cell line (CHRC5).
Epitope	Cytoplasmic domain present on the MDR1 isoform of P Glycoprotein. This epitope is strongly conserved in mammals.
Positive control	Drug-sensitive parental cell lines and their multidrug-resistant derivatives. Human liver (positive staining detected along luminal surfaces of bilecanaliculi) or human colon (positive staining localized to luminal surface of secretory epithelium).
General notes	<p>This antibody is reported to work in WB according to the literature (PubMed 22389470 and 17961285). Due to customer feedback of difficulty in WB, we are no longer able to guarantee ab3366 in WB.</p> <p>The Life Science industry has been in the grips of a reproducibility crisis for a number of years. Abcam is leading the way in addressing this with our range of recombinant monoclonal antibodies and knockout edited cell lines for gold-standard validation. Please check that this product meets your needs before purchasing.</p> <p>If you have any questions, special requirements or concerns, please send us an inquiry and/or contact our Support team ahead of purchase. Recommended alternatives for this product can be found below, along with publications, customer reviews and Q&As</p>

Properties

Form	Liquid
Storage instructions	Shipped at 4°C. Store at +4°C short term (1-2 weeks). Store at -20°C or -80°C. Avoid freeze /

	thaw cycle.
Storage buffer	Preservative: 0.1% Sodium azide Constituents: PBS, 1% BSA
Purity	Tissue culture supernatant
Clonality	Monoclonal
Clone number	JSB-1
Isotype	IgG1

Applications

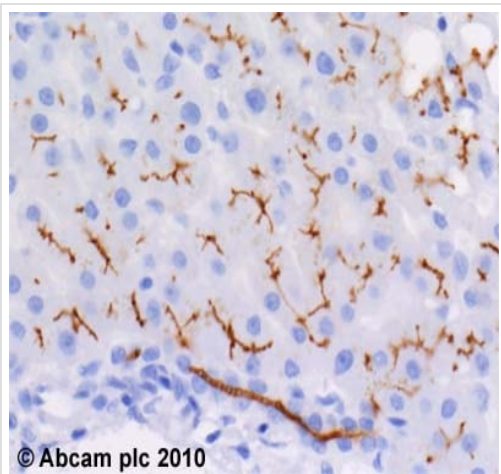
The Abpromise guarantee Our [Abpromise guarantee](#) covers the use of ab3366 in the following tested applications. The application notes include recommended starting dilutions; optimal dilutions/concentrations should be determined by the end user.

Application	Abreviews	Notes
IHC-P	★★★★☆ (1)	1/40. Perform heat mediated antigen retrieval before commencing with IHC staining protocol. (EDTA, pH 8-9 for example). 20-60 minutes at room temperature.

Target

Function	Energy-dependent efflux pump responsible for decreased drug accumulation in multidrug-resistant cells.
Tissue specificity	Expressed in liver, kidney, small intestine and brain.
Involvement in disease	Genetic variations in ABCB1 are associated with susceptibility to inflammatory bowel disease type 13 (IBD13) [MIM:612244]. Inflammatory bowel disease is characterized by a chronic relapsing intestinal inflammation. It is subdivided into Crohn disease and ulcerative colitis phenotypes. Crohn disease may involve any part of the gastrointestinal tract, but most frequently the terminal ileum and colon. Bowel inflammation is transmural and discontinuous; it may contain granulomas or be associated with intestinal or perianal fistulas. In contrast, in ulcerative colitis, the inflammation is continuous and limited to rectal and colonic mucosal layers; fistulas and granulomas are not observed. Both diseases include extraintestinal inflammation of the skin, eyes, or joints. Crohn disease and ulcerative colitis are commonly classified as autoimmune diseases.
Sequence similarities	Belongs to the ABC transporter superfamily. ABCB family. Multidrug resistance exporter (TC 3.A.1.201) subfamily. Contains 2 ABC transmembrane type-1 domains. Contains 2 ABC transporter domains.
Cellular localization	Membrane.

Images



Immunohistochemistry (Formalin/PFA-fixed paraffin-embedded sections) - Anti-P Glycoprotein antibody [JSB-1] (ab3366)

ab3366 (4µg/ml) staining p Glycoprotein in human liver, using an automated system (DAKO Autostainer Plus). Using this protocol there is a cell membrane staining of a subpopulation of hepatocytes.

Sections were rehydrated and antigen retrieved with the Dako 3 in 1 AR buffer EDTA pH 9.0 in a DAKO PT link. Slides were peroxidase blocked in 3% H₂O₂ in methanol for 10 mins. They were then blocked with Dako Protein block for 10 minutes (containing casein 0.25% in PBS) then incubated with primary antibody for 20 min and detected with Dako envision flex amplification kit for 30 minutes. Colorimetric detection was completed with Diaminobenzidine for 5 minutes. Slides were counterstained with Haematoxylin and coverslipped under DePeX. Please note that, for manual staining, optimization of primary antibody concentration and incubation time is recommended. Signal amplification may be required.

Please note: All products are "FOR RESEARCH USE ONLY. NOT FOR USE IN DIAGNOSTIC PROCEDURES"

Our Abpromise to you: Quality guaranteed and expert technical support

- Replacement or refund for products not performing as stated on the datasheet
- Valid for 12 months from date of delivery
- Response to your inquiry within 24 hours
- We provide support in Chinese, English, French, German, Japanese and Spanish
- Extensive multi-media technical resources to help you
- We investigate all quality concerns to ensure our products perform to the highest standards

If the product does not perform as described on this datasheet, we will offer a refund or replacement. For full details of the Abpromise, please visit <https://www.abcam.com/abpromise> or contact our technical team.

Terms and conditions

- Guarantee only valid for products bought direct from Abcam or one of our authorized distributors