

## Product datasheet

# Anti-P1 Protease antibody ab175353

[1 Image](#)

### Overview

---

<b>Product name</b>	Anti-P1 Protease antibody
<b>Description</b>	Rabbit polyclonal to P1 Protease
<b>Host species</b>	Rabbit
<b>Specificity</b>	P1 Protease cleavage site (TEV Cleavage site).
<b>Tested applications</b>	<b>Suitable for:</b> WB
<b>Species reactivity</b>	<b>Reacts with:</b> Species independent
<b>Immunogen</b>	Synthetic peptide corresponding to P1 Protease. representing the cleavage site recognized by P1 Protease (TEV protease; Tobacco etch virus).

### General notes

The Life Science industry has been in the grips of a reproducibility crisis for a number of years. Abcam is leading the way in addressing this with our range of recombinant monoclonal antibodies and knockout edited cell lines for gold-standard validation. Please check that this product meets your needs before purchasing.

If you have any questions, special requirements or concerns, please send us an inquiry and/or contact our Support team ahead of purchase. Recommended alternatives for this product can be found below, along with publications, customer reviews and Q&As

### Properties

---

<b>Form</b>	Liquid
<b>Storage instructions</b>	Shipped at 4°C. Store at +4°C short term (1-2 weeks). Upon delivery aliquot. Store at -20°C long term. Avoid freeze / thaw cycle.
<b>Storage buffer</b>	pH: 8.40 Constituent: 3% EDTA  antimicrobial buffer (BBS) [composed of Sodium Borate, Boric acid, NaCl]
<b>Clonality</b>	Polyclonal
<b>Isotype</b>	IgG

### Applications

---

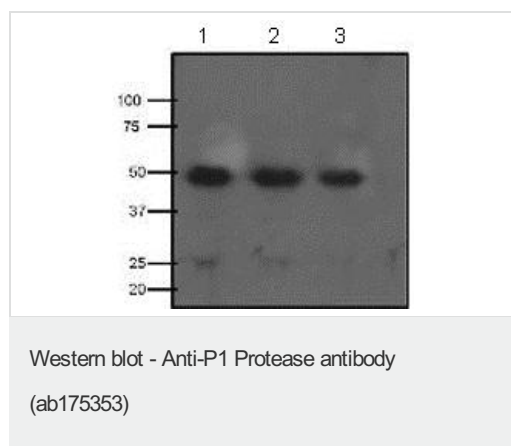
## The Abpromise guarantee

Our [Abpromise guarantee](#) covers the use of ab175353 in the following tested applications.

The application notes include recommended starting dilutions; optimal dilutions/concentrations should be determined by the end user.

Application	Abreviews	Notes
WB		Use a concentration of 0.5 µg/ml.

## Images



**All lanes** : Anti-P1 Protease antibody (ab175353) at 1/500 dilution

**Lane 1** : P1 Protease control protein at 20 µl

**Lane 2** : P1 Protease control protein at 15 µl

**Lane 3** : P1 Protease control protein at 10 µl

### Secondary

**All lanes** : goat anti-rabbit IgG-HRP secondary antibody at 1/10000 dilution

**Please note:** All products are "FOR RESEARCH USE ONLY. NOT FOR USE IN DIAGNOSTIC PROCEDURES"

## Our Abpromise to you: Quality guaranteed and expert technical support

- Replacement or refund for products not performing as stated on the datasheet
- Valid for 12 months from date of delivery
- Response to your inquiry within 24 hours
- We provide support in Chinese, English, French, German, Japanese and Spanish
- Extensive multi-media technical resources to help you
- We investigate all quality concerns to ensure our products perform to the highest standards

If the product does not perform as described on this datasheet, we will offer a refund or replacement. For full details of the Abpromise, please visit <https://www.abcam.com/abpromise> or contact our technical team.

## Terms and conditions

- Guarantee only valid for products bought direct from Abcam or one of our authorized distributors