



## Product datasheet

# Anti-p107 antibody ab244504

★ ★ ★ ★ ★ 1 Abreviews 8 Images

### Overview

<b>Product name</b>	Anti-p107 antibody
<b>Description</b>	Rabbit polyclonal to p107
<b>Host species</b>	Rabbit
<b>Tested applications</b>	<b>Suitable for:</b> IHC-P, WB, ICC/IF
<b>Species reactivity</b>	<b>Reacts with:</b> Human
<b>Immunogen</b>	<p>Recombinant fragment corresponding to Human p107 aa 564-647. Sequence:</p> <p>ESLAWSHDSALWEALQVSANKVPTCEEVIFPNNFETGNG GNVQGHPLMP MSPLMHPRVKEVRTDSGSLRRDMQPLSPISVHER</p> <p>Database link: <a href="#">P28749</a></p> <p style="text-align: right;">  <a href="#">Run BLAST with</a>                 <a href="#">Run BLAST with</a> </p>
<b>Positive control</b>	IHC-P: Human lymph node, testis, colon and kidney tissues. WB: U-251 MG cell lysate. ICC/IF: HeLa cells.
<b>General notes</b>	<p>Reproducibility is key to advancing scientific discovery and accelerating scientists' next breakthrough.</p> <p>Abcam is leading the way with our range of recombinant antibodies, knockout-validated antibodies and knockout cell lines, all of which support improved reproducibility.</p> <p>We are also planning to innovate the way in which we present recommended applications and species on our product datasheets, so that only applications &amp; species that have been tested in our own labs, our suppliers or by selected trusted collaborators are covered by our Abpromise™ guarantee.</p> <p>In preparation for this, we have started to update the applications &amp; species that this product is Abpromise guaranteed for.</p> <p>We are also updating the applications &amp; species that this product has been "predicted to work with," however this information is not covered by our Abpromise guarantee.</p> <p>Applications &amp; species from publications and Abreviews that have not been tested in our own labs or in those of our suppliers are not covered by the Abpromise guarantee.</p> <p>Please check that this product meets your needs before purchasing. If you have any questions, special requirements or concerns, please send us an inquiry and/or contact our Support team ahead of purchase. Recommended alternatives for this product can be found below, as well as</p>

customer reviews and Q&As.


## Properties

<b>Form</b>	Liquid
<b>Storage instructions</b>	Shipped at 4°C. Store at +4°C short term (1-2 weeks). Upon delivery aliquot. Store at -20°C long term. Avoid freeze / thaw cycle.
<b>Storage buffer</b>	pH: 7.20 Preservative: 0.02% Sodium azide Constituents: PBS, 40% Glycerol (glycerin, glycerine)
<b>Purity</b>	Immunogen affinity purified
<b>Clonality</b>	Polyclonal
<b>Isotype</b>	IgG

## Applications

Our [Abpromise guarantee](#) covers the use of **ab244504** in the following tested applications.

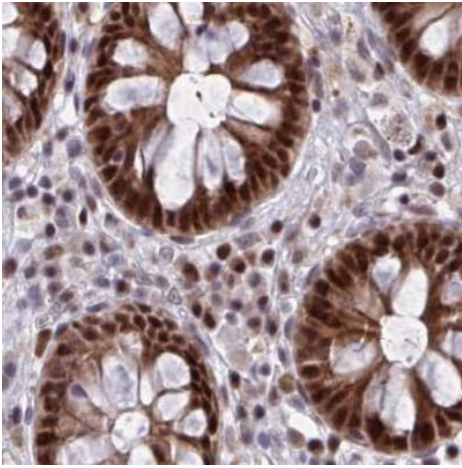
The application notes include recommended starting dilutions; optimal dilutions/concentrations should be determined by the end user.

Application	Abreviews	Notes
IHC-P		1/500 - 1/1000. Perform heat mediated antigen retrieval with citrate buffer pH 6 before commencing with IHC staining protocol.
WB		Use a concentration of 0.04 - 0.4 µg/ml. Predicted molecular weight: 121 kDa.
ICC/IF		Use a concentration of 0.25 - 2 µg/ml. Fixation/Permeabilization: PFA/Triton X-100.

## Target

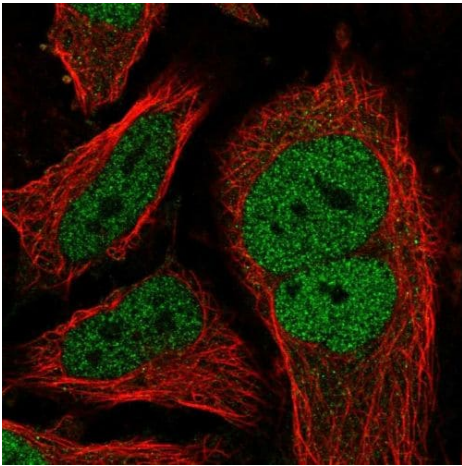
<b>Function</b>	Key regulator of entry into cell division. Directly involved in heterochromatin formation by maintaining overall chromatin structure and, in particular, that of constitutive heterochromatin by stabilizing histone methylation. Recruits and targets histone methyltransferases SUV420H1 and SUV420H2, leading to epigenetic transcriptional repression. Controls histone H4 'Lys-20' trimethylation. Probably acts as a transcription repressor by recruiting chromatin-modifying enzymes to promoters. Potent inhibitor of E2F-mediated trans-activation. Forms a complex with adenovirus E1A and with SV40 large T antigen. May bind and modulate functionally certain cellular proteins with which T and E1A compete for pocket binding. May act as a tumor suppressor.
<b>Sequence similarities</b>	Belongs to the retinoblastoma protein (RB) family.
<b>Post-translational modifications</b>	Exists in both phosphorylated and unphosphorylated forms, and T, but not E1A, binds only to the unphosphorylated form. Cell-cycle arrest properties are inactivated by phosphorylation on Thr-332, Ser-640, Ser-964 and Ser-975 by CDK4.
<b>Cellular localization</b>	Nucleus.

## Images



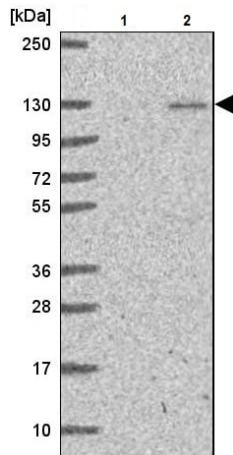
Immunohistochemistry (Formalin/PFA-fixed paraffin-embedded sections) - Anti-p107 antibody (ab244504)

Paraffin-embedded human colon tissue stained for p107 using ab244504 at 1/500 dilution in immunohistochemical analysis.



Immunocytochemistry/ Immunofluorescence - Anti-p107 antibody (ab244504)

PFA-fixed, Triton X-100 permeabilized HeLa (human epithelial cell line from cervix adenocarcinoma cells) stained for p107 (green) using ab244504 at 4 µg/ml in ICC/IF.



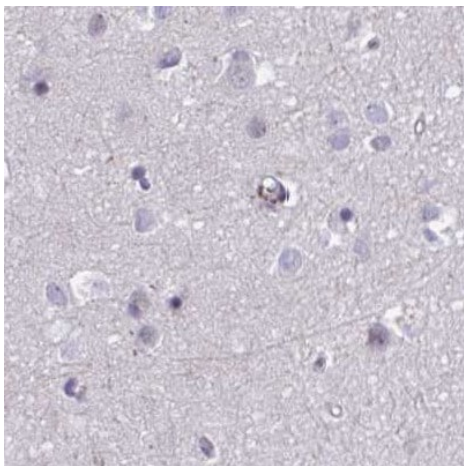
Western blot - Anti-p107 antibody (ab244504)

**All lanes :** Anti-p107 antibody (ab244504) at 0.4  $\mu\text{g/ml}$

**Lane 1 :** RT4 (human urinary bladder cancer cell line) cell lysate

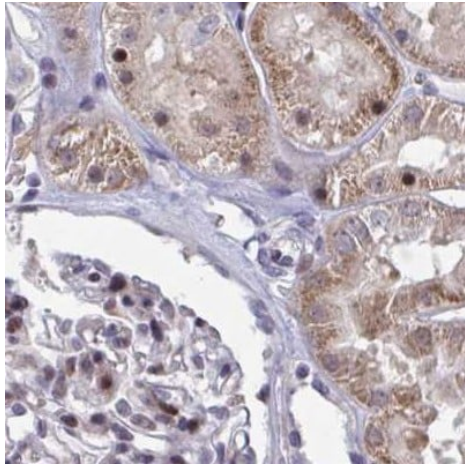
**Lane 2 :** U-251 MG (human brain glioma cell line) cell lysate

**Predicted band size:** 121 kDa



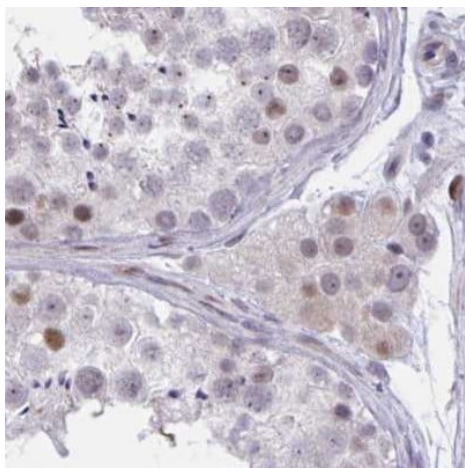
Immunohistochemistry (Formalin/PFA-fixed paraffin-embedded sections) - Anti-p107 antibody (ab244504)

Paraffin-embedded human cerebral cortex tissue stained for p107 using ab244504 at 1/500 dilution in immunohistochemical analysis.



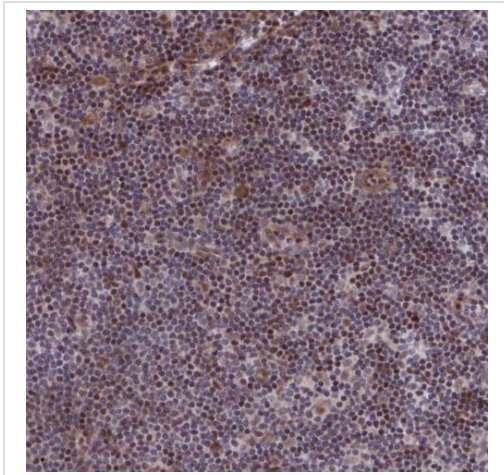
Immunohistochemistry (Formalin/PFA-fixed paraffin-embedded sections) - Anti-p107 antibody (ab244504)

Paraffin-embedded human kidney tissue stained for p107 using ab244504 at 1/500 dilution in immunohistochemical analysis.



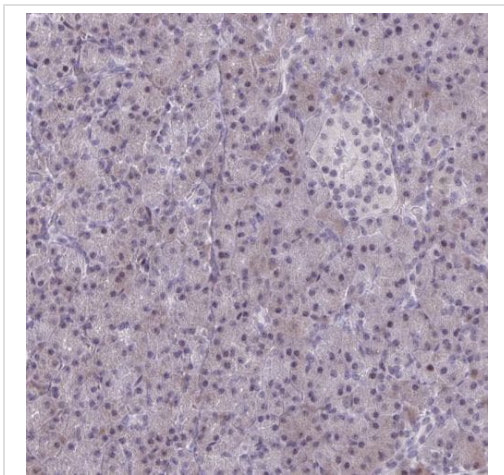
Immunohistochemistry (Formalin/PFA-fixed paraffin-embedded sections) - Anti-p107 antibody (ab244504)

Paraffin-embedded human testis tissue stained for p107 using ab244504 at 1/500 dilution in immunohistochemical analysis.



Paraffin-embedded human lymph node tissue stained for p170 using ab244504 at 1/500 dilution in immunohistochemical analysis.

Immunohistochemistry (Formalin/PFA-fixed paraffin-embedded sections) - Anti-p170 antibody (ab244504)



Paraffin-embedded human pancreas tissue stained for p170 using ab244504 at 1/500 dilution in immunohistochemical analysis.

Immunohistochemistry (Formalin/PFA-fixed paraffin-embedded sections) - Anti-p170 antibody (ab244504)

**Please note:** All products are "FOR RESEARCH USE ONLY. NOT FOR USE IN DIAGNOSTIC PROCEDURES"

**Our Abpromise to you: Quality guaranteed and expert technical support**

- Replacement or refund for products not performing as stated on the datasheet
- Valid for 12 months from date of delivery
- Response to your inquiry within 24 hours
  
- We provide support in Chinese, English, French, German, Japanese and Spanish
- Extensive multi-media technical resources to help you
- We investigate all quality concerns to ensure our products perform to the highest standards

If the product does not perform as described on this datasheet, we will offer a refund or replacement. For full details of the Abpromise, please visit <https://www.abcam.com/abpromise> or contact our technical team.

### **Terms and conditions**

---

- Guarantee only valid for products bought direct from Abcam or one of our authorized distributors