

Product datasheet

Anti-P2X3 antibody ab10269

★★★★☆ 3 Abreviews 11 References 1 Image

Overview

Product name	Anti-P2X3 antibody
Description	Rabbit polyclonal to P2X3
Host species	Rabbit
Tested applications	Suitable for: ICC, WB, IHC-Fr, ICC/IF, IHC-FoFr
Species reactivity	Reacts with: Rat, Human Predicted to work with: Mouse, Non human primates
Immunogen	Synthetic peptide corresponding to Rat P2X3 aa 350 to the C-terminus (C terminal). Database link: P49654 Run BLAST with Run BLAST with
General notes	<p>The Life Science industry has been in the grips of a reproducibility crisis for a number of years. Abcam is leading the way in addressing this with our range of recombinant monoclonal antibodies and knockout edited cell lines for gold-standard validation. Please check that this product meets your needs before purchasing.</p> <p>If you have any questions, special requirements or concerns, please send us an inquiry and/or contact our Support team ahead of purchase. Recommended alternatives for this product can be found below, along with publications, customer reviews and Q&As</p>

Properties

Form	Liquid
Storage instructions	Shipped at 4°C. Upon delivery aliquot and store at -20°C or -80°C. Avoid repeated freeze / thaw cycles.
Storage buffer	Preservative: 0.05% Sodium azide Constituent: Whole serum
Purity	Whole antiserum
Clonality	Polyclonal
Isotype	IgG

Applications

The Abpromise guarantee

Our [Abpromise guarantee](#) covers the use of ab10269 in the following tested applications.

The application notes include recommended starting dilutions; optimal dilutions/concentrations should be determined by the end user.

Application	Abreviews	Notes
ICC		Use at an assay dependent concentration.
WB	★ ★ ★ ☆ ☆ (1)	Use at an assay dependent concentration.
IHC-Fr	★ ★ ★ ★ ★ (2)	Use at an assay dependent concentration.
ICC/IF		Use at an assay dependent concentration.
IHC-FoFr		1/100 - 1/300.

Target

Function	Receptor for ATP that acts as a ligand-gated ion channel.
Sequence similarities	Belongs to the P2X receptor family.
Cellular localization	Membrane.

Images

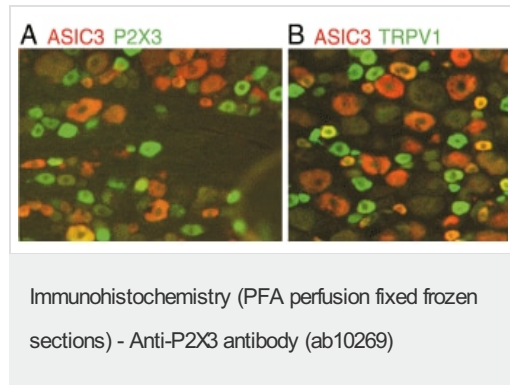


Image A: [ab10248](#), at a dilution of 1/1000, staining P2X3 (green) in rat dorsal root ganglia sections by Immunohistochemistry (PFA perfusion fixed frozen sections). Other structures visualized with anti-ASIC3 (red).

Image B: Structures in rat dorsal root ganglia sections visualized with anti-ASIC3 (red) and anti-TRPV1 (green). Double-labeled cells are yellow or orange.

Please note: All products are "FOR RESEARCH USE ONLY. NOT FOR USE IN DIAGNOSTIC PROCEDURES"

Our Abpromise to you: Quality guaranteed and expert technical support

- Replacement or refund for products not performing as stated on the datasheet
- Valid for 12 months from date of delivery
- Response to your inquiry within 24 hours
- We provide support in Chinese, English, French, German, Japanese and Spanish
- Extensive multi-media technical resources to help you
- We investigate all quality concerns to ensure our products perform to the highest standards

If the product does not perform as described on this datasheet, we will offer a refund or replacement. For full details of the Abpromise, please visit <https://www.abcam.com/abpromise> or contact our technical team.

Terms and conditions

- Guarantee only valid for products bought direct from Abcam or one of our authorized distributors