

## Product datasheet

# Anti-P2Y12 antibody [1C2A9] ab233760

[4 Images](#)

### Overview

---

<b>Product name</b>	Anti-P2Y12 antibody [1C2A9]
<b>Description</b>	Mouse monoclonal [1C2A9] to P2Y12
<b>Host species</b>	Mouse
<b>Tested applications</b>	<b>Suitable for:</b> WB, Flow Cyt
<b>Species reactivity</b>	<b>Reacts with:</b> Rat, Human
<b>Immunogen</b>	Recombinant fragment within Human P2Y12. The exact sequence is proprietary. Expressed in E.coli. Database link: <a href="#">Q9H244</a>
<b>Positive control</b>	WB: Recombinant human P2Y12 protein; Human P2Y12-hlgG-Fc-transfected HEK-293 cell lysate; PC-3 and C6 cell lysates. Flow cyt: HeLa cells.
<b>General notes</b>	<p>Reproducibility is key to advancing scientific discovery and accelerating scientists' next breakthrough.</p> <p>Abcam is leading the way with our range of recombinant antibodies, knockout-validated antibodies and knockout cell lines, all of which support improved reproducibility.</p> <p>We are also planning to innovate the way in which we present recommended applications and species on our product datasheets, so that only applications &amp; species that have been tested in our own labs, our suppliers or by selected trusted collaborators are covered by our Abpromise™ guarantee.</p> <p>In preparation for this, we have started to update the applications &amp; species that this product is Abpromise guaranteed for.</p> <p>We are also updating the applications &amp; species that this product has been “predicted to work with,” however this information is not covered by our Abpromise guarantee.</p> <p>Applications &amp; species from publications and Abreviews that have not been tested in our own labs or in those of our suppliers are not covered by the Abpromise guarantee.</p> <p>Please check that this product meets your needs before purchasing. If you have any questions, special requirements or concerns, please send us an inquiry and/or contact our Support team ahead of purchase. Recommended alternatives for this product can be found below, as well as customer reviews and Q&amp;As.</p>

### Properties

---

<b>Form</b>	Liquid
<b>Storage instructions</b>	Shipped at 4°C. Store at +4°C short term (1-2 weeks). Upon delivery aliquot. Store at -20°C long term. Avoid freeze / thaw cycle.
<b>Storage buffer</b>	Preservative: 0.05% Sodium azide Constituent: PBS
<b>Purity</b>	Protein G purified
<b>Purification notes</b>	Purified from tissue culture supernatant.
<b>Clonality</b>	Monoclonal
<b>Clone number</b>	1C2A9
<b>Isotype</b>	IgG1

## Applications

Our [Abpromise guarantee](#) covers the use of **ab233760** in the following tested applications.

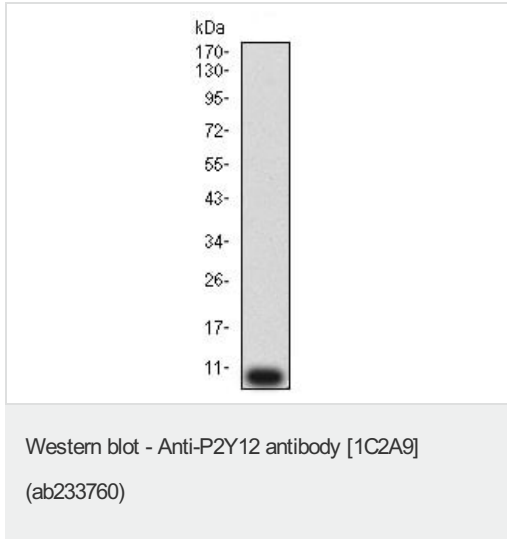
The application notes include recommended starting dilutions; optimal dilutions/concentrations should be determined by the end user.

Application	Abreviews	Notes
WB		1/500 - 1/2000. Predicted molecular weight: 39 kDa.
Flow Cyt		1/200 - 1/400.

## Target

<b>Function</b>	Receptor for ADP and ATP coupled to G-proteins that inhibit the adenylyl cyclase second messenger system. Not activated by UDP and UTP. Involved in platelets aggregation.
<b>Tissue specificity</b>	Highly expressed in the platelets, lower levels in the brain. Lowest levels in the lung, appendix, pituitary and adrenal gland. Expressed in the spinal cord and in the fetal brain.
<b>Involvement in disease</b>	Defects in P2RY12 are the cause of P2RY12 deficiency (P2RY12D) [MIM:609821]. It is a condition characterized by severe impairment of platelet response to ADP and abnormal bleeding marked by excessive posttraumatic and postsurgical blood loss.
<b>Sequence similarities</b>	Belongs to the G-protein coupled receptor 1 family.
<b>Cellular localization</b>	Cell membrane.

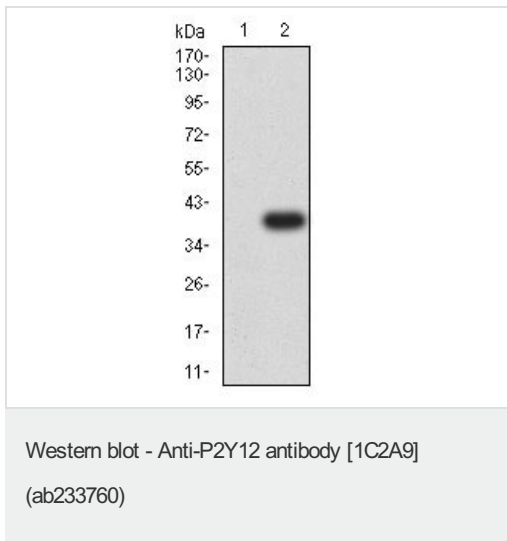
## Images



Anti-P2Y12 antibody [1C2A9] (ab233760) at 1/500 dilution +  
Recombinant human P2Y12 protein

**Predicted band size:** 39 kDa

Expected MW is 9.4 kDa.

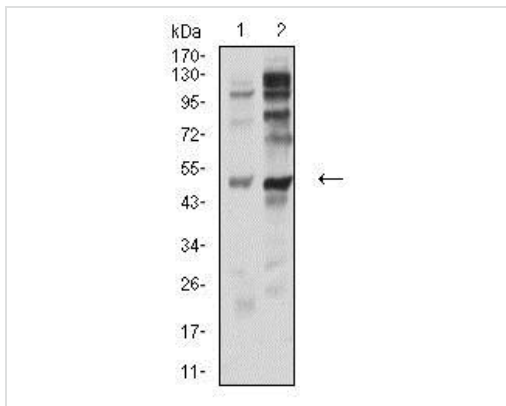


**All lanes :** Anti-P2Y12 antibody [1C2A9] (ab233760) at 1/500 dilution

**Lane 1 :** Untransfected HEK-293 (human epithelial cell line from embryonic kidney) cell lysate

**Lane 2 :** Human P2Y12-hlgG-Fc-transfected HEK-293 cell lysate

**Predicted band size:** 39 kDa



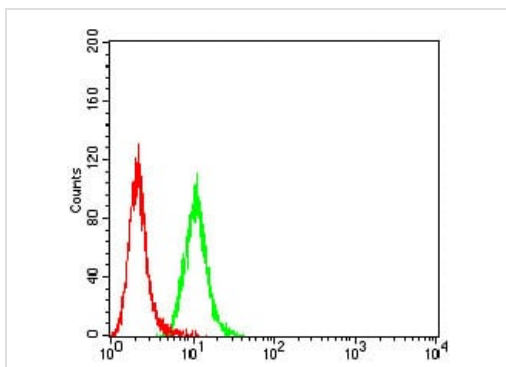
Western blot - Anti-P2Y12 antibody [1C2A9]  
(ab233760)

**All lanes** : Anti-P2Y12 antibody [1C2A9] (ab233760) at 1/500 dilution

**Lane 1** : PC-3 (human prostate adenocarcinoma cell line) cell lysate

**Lane 2** : C6 (rat glioma cell line) cell lysate

**Predicted band size:** 39 kDa



Flow Cytometry - Anti-P2Y12 antibody [1C2A9]  
(ab233760)

Flow cytometric analysis of HeLa (human epithelial cell line from cervix adenocarcinoma) cells labeling P2Y12 with ab233760 at 1/200 dilution (green) compared with a negative control (red).

**Please note:** All products are "FOR RESEARCH USE ONLY. NOT FOR USE IN DIAGNOSTIC PROCEDURES"

### Our Abpromise to you: Quality guaranteed and expert technical support

- Replacement or refund for products not performing as stated on the datasheet
- Valid for 12 months from date of delivery
- Response to your inquiry within 24 hours
- We provide support in Chinese, English, French, German, Japanese and Spanish
- Extensive multi-media technical resources to help you
- We investigate all quality concerns to ensure our products perform to the highest standards

If the product does not perform as described on this datasheet, we will offer a refund or replacement. For full details of the Abpromise, please visit <https://www.abcam.com/abpromise> or contact our technical team.

### Terms and conditions

- Guarantee only valid for products bought direct from Abcam or one of our authorized distributors