


Product datasheet

Anti-p40-phox antibody ab227495

1 Image

Overview

Product name	Anti-p40-phox antibody
Description	Rabbit polyclonal to p40-phox
Host species	Rabbit
Tested applications	Suitable for: WB
Species reactivity	Reacts with: Human Predicted to work with: Rabbit 
Immunogen	Recombinant full length protein corresponding to Human p40-phox. Database link: Q15080
Positive control	WB: Jurkat, Raji, K562 and THP-1 whole cell lysates.
General notes	Previously labelled as NCF4.

Properties

Form	Liquid
Storage instructions	Shipped at 4°C. Store at +4°C short term (1-2 weeks). Upon delivery aliquot. Store at -20°C long term. Avoid freeze / thaw cycle.
Storage buffer	pH: 7.00 Preservative: 0.01% Thimerosal (merthiolate) Constituents: 1.21% Tris, 0.75% Glycine, 20% Glycerol
Purity	Immunogen affinity purified
Clonality	Polyclonal
Isotype	IgG

Applications

Our [Abpromise guarantee](#) covers the use of **ab227495** in the following tested applications.

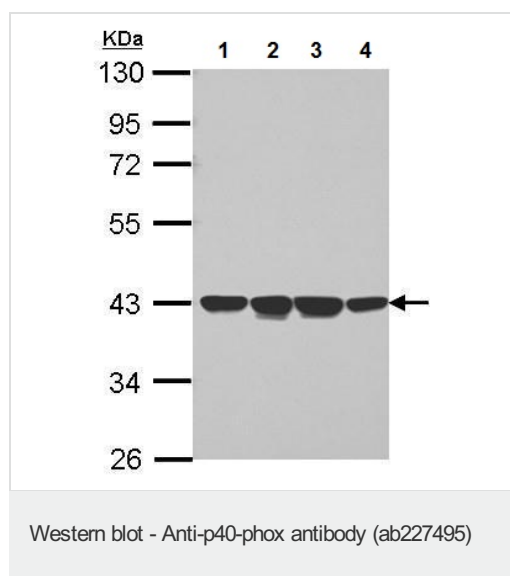
The application notes include recommended starting dilutions; optimal dilutions/concentrations should be determined by the end user.

Application	Abreviews	Notes
WB		1/500 - 1/3000. Predicted molecular weight: 39 kDa.

Target

Function	Component of the NADPH-oxidase, a multicomponent enzyme system responsible for the oxidative burst in which electrons are transported from NADPH to molecular oxygen, generating reactive oxidant intermediates. It may be important for the assembly and/or activation of the NADPH-oxidase complex.
Tissue specificity	Expression is restricted to hematopoietic cells.
Sequence similarities	Contains 1 PX (phox homology) domain. Contains 1 SH3 domain.
Cellular localization	Cytoplasm.

Images



All lanes : Anti-p40-phox antibody (ab227495) at 1/1000 dilution

Lane 1 : Jurkat (human T cell leukemia cell line from peripheral blood) whole cell lysate

Lane 2 : Raji (human Burkitt's lymphoma cell line) whole cell lysate

Lane 3 : K562 (human chronic myelogenous leukemia cell line from bone marrow) whole cell lysate

Lane 4 : THP-1 (human monocytic leukemia cell line) whole cell lysate

Lysates/proteins at 30 µg per lane.

Predicted band size: 39 kDa

10% SDS-PAGE gel.

Please note: All products are "FOR RESEARCH USE ONLY. NOT FOR USE IN DIAGNOSTIC PROCEDURES"

Our Abpromise to you: Quality guaranteed and expert technical support

- Replacement or refund for products not performing as stated on the datasheet
- Valid for 12 months from date of delivery
- Response to your inquiry within 24 hours

- We provide support in Chinese, English, French, German, Japanese and Spanish
- Extensive multi-media technical resources to help you
- We investigate all quality concerns to ensure our products perform to the highest standards

If the product does not perform as described on this datasheet, we will offer a refund or replacement. For full details of the Abpromise, please visit <https://www.abcam.com/abpromise> or contact our technical team.

Terms and conditions

- Guarantee only valid for products bought direct from Abcam or one of our authorized distributors