


Product datasheet

Anti-p46 antibody ab134556

2 Images

Overview

---

<b>Product name</b>	Anti-p46 antibody
<b>Description</b>	Rabbit polyclonal to p46
<b>Host species</b>	Rabbit
<b>Tested applications</b>	<b>Suitable for:</b> WB, IP
<b>Species reactivity</b>	<b>Reacts with:</b> Human <b>Predicted to work with:</b> Mouse, Rat, Horse, Guinea pig, Cow, Dog, Chimpanzee, Ferret, Rhesus monkey, Gorilla, Chinese hamster, Orangutan, Elephant 
<b>Immunogen</b>	Synthetic peptide corresponding to Human p46 aa 371-421. Database link: <a href="#">NP_115687.2</a>
<b>Positive control</b>	HeLa, 293T and Jurkat whole cell lysate ( <a href="#">ab7899</a> )
<b>General notes</b>	Previously labelled as SKAR.

Properties

---

<b>Form</b>	Liquid
<b>Storage instructions</b>	Shipped at 4°C. Store at +4°C.
<b>Storage buffer</b>	Preservative: 0.09% Sodium azide Constituent: 99% Tris citrate/phosphate  pH 7 to 8.
<b>Purity</b>	Immunogen affinity purified
<b>Purification notes</b>	ab134556 is affinity purified using an epitope specific to p46 immobilized on a solid support.
<b>Clonality</b>	Polyclonal
<b>Isotype</b>	IgG

Applications

---

Our [Abpromise guarantee](#) covers the use of **ab134556** in the following tested applications.

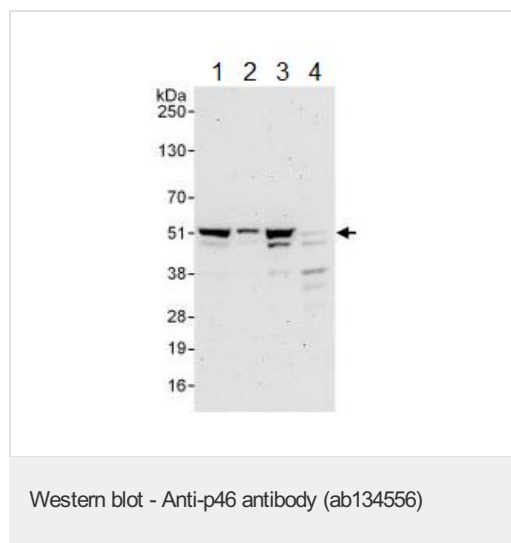
The application notes include recommended starting dilutions; optimal dilutions/concentrations should be determined by the end user.

Application	Abreviews	Notes
WB		1/2000 - 1/10000. Predicted molecular weight: 46 kDa.
IP		Use a concentration of 2 - 10 µg/ml.

## Target

<b>Function</b>	Is involved in regulation of translation. Is preferentially associated with CBC-bound spliced mRNA-protein complexes during the pioneer round of mRNA translation. Contributes to enhanced translational efficiency of spliced over nonspliced mRNAs. Recruits activated ribosomal protein S6 kinase beta-1 /RPS6KB1 to newly synthesized mRNA.
<b>Sequence similarities</b>	Contains 1 RRM (RNA recognition motif) domain.
<b>Post-translational modifications</b>	Phosphorylated upon DNA damage, probably by ATM or ATR.
<b>Cellular localization</b>	Nucleus. Nucleus speckle. Cytoplasm. Nucleocytoplasmic shuttling protein.

## Images



**All lanes :** Anti-p46 antibody (ab134556) at 0.1 µg/ml

**Lane 1 :** HeLa whole cell lysate at 50 µg

**Lane 2 :** HeLa whole cell lysate at 15 µg

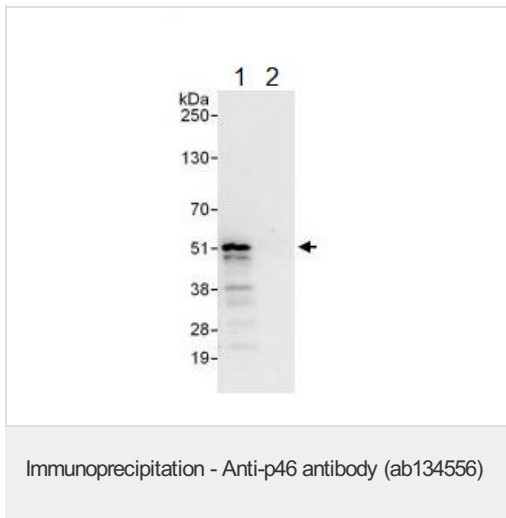
**Lane 3 :** 293T whole cell lysate at 50 µg

**Lane 4 :** Jurkat whole cell lysate at 50 µg

Developed using the ECL technique.

**Predicted band size:** 46 kDa

**Exposure time:** 3 minutes



Detection of p46 by Western blot of immunoprecipitate.

Lane 1: ab134556, at a 1 µg/ml, staining p46 in HeLa whole cell lysate immunoprecipitated using ab134556 at 6 µg/mg lysate (1 mg/IP; 20% of IP loaded/lane).

Lane 2: The lysate is precipitated with an IgG control antibody.

Detection: Chemiluminescence with an exposure time of 10 seconds.

**Please note:** All products are "FOR RESEARCH USE ONLY. NOT FOR USE IN DIAGNOSTIC PROCEDURES"

### Our Abpromise to you: Quality guaranteed and expert technical support

- Replacement or refund for products not performing as stated on the datasheet
- Valid for 12 months from date of delivery
- Response to your inquiry within 24 hours
- We provide support in Chinese, English, French, German, Japanese and Spanish
- Extensive multi-media technical resources to help you
- We investigate all quality concerns to ensure our products perform to the highest standards

If the product does not perform as described on this datasheet, we will offer a refund or replacement. For full details of the Abpromise, please visit <https://www.abcam.com/abpromise> or contact our technical team.

### Terms and conditions

- Guarantee only valid for products bought direct from Abcam or one of our authorized distributors