

Product datasheet

Anti-p57 Kip2 antibody [SP118] ab231439

RabMAb

5 Images

Overview

Product name	Anti-p57 Kip2 antibody [SP118]
Description	Rabbit monoclonal [SP118] to p57 Kip2
Host species	Rabbit
Tested applications	Suitable for: IHC-P
Species reactivity	Reacts with: Human Predicted to work with: Mouse, Rat ▲
Immunogen	Synthetic peptide within Human p57 Kip2 aa 50-150 (internal sequence). The exact sequence is proprietary. Database link: P49918
Positive control	IHC-P: Human placenta, complete hydatidiform mole, and partial hydatidiform mole tissue.
General notes	This product is FOR RESEARCH USE ONLY. For commercial use, please contact partnerships@abcam.com.

Properties

Form	Liquid
Storage instructions	Shipped at 4°C. Store at +4°C short term (1-2 weeks). Upon delivery aliquot. Store at -20°C long term. Avoid freeze / thaw cycle.
Storage buffer	pH: 7.6 Preservative: 0.099% Sodium azide Constituents: PBS, 1% BSA
Purity	Protein A/G purified
Purification notes	Purified from TCS by Protein A/G.
Clonality	Monoclonal
Clone number	SP118
Isotype	IgG

Applications

Our [Abpromise guarantee](#) covers the use of **ab231439** in the following tested applications.

The application notes include recommended starting dilutions; optimal dilutions/concentrations should be determined by the end user.

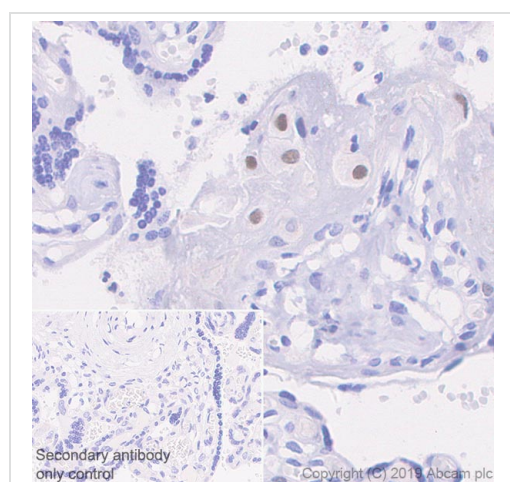
Application	Abreviews	Notes
-------------	-----------	-------

IHC-P		1/100. Boil tissue section in EDTA buffer for 10 minutes followed by cooling at room temperature for 20 minutes. Incubate with primary antibody for 10 minutes at room temperature.
-------	--	---

Target

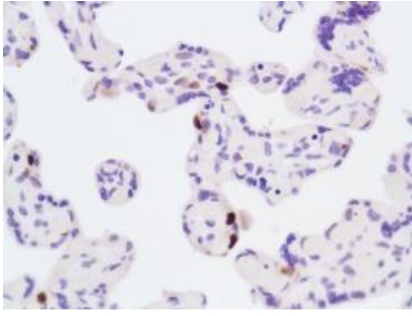
Function	Potent tight-binding inhibitor of several G1 cyclin/CDK complexes (cyclin E-CDK2, cyclin D2-CDK4, and cyclin A-CDK2) and, to lesser extent, of the mitotic cyclin B-CDC2. Negative regulator of cell proliferation. May play a role in maintenance of the non-proliferative state throughout life.
Tissue specificity	Expressed in the heart, brain, lung, skeletal muscle, kidney, pancreas and testis. High levels are seen in the placenta while low levels are seen in the liver.
Involvement in disease	Defects in CDKN1C are a cause of Beckwith-Wiedemann syndrome (BWS) [MIM:130650]. BWS is a genetically heterogeneous disorder characterized by anterior abdominal wall defects including exomphalos (omphalocele), pre- and postnatal overgrowth, and macroglossia. Additional less frequent complications include specific developmental defects and a predisposition to embryonal tumors. Note=Defects in CDKN1C are involved in tumor formation.
Sequence similarities	Belongs to the CDI family.
Cellular localization	Nucleus.

Images



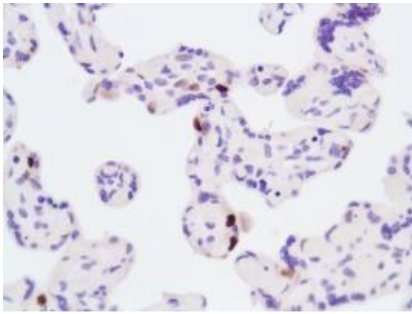
Immunohistochemistry (Formalin/PFA-fixed paraffin-embedded sections) analysis of Human placenta tissue sections labeling p57 Kip2 with ab231439 at 1/100 dilution (1.04 µg/ml). Heat mediated antigen retrieval was performed Heat mediated antigen retrieval with Tris-EDTA buffer (pH 9.0, epitope retrieval solution 2) for 30 mins. Rabbit specific IHC polymer detection kit HRP/DAB ([ab209101](#)) was used as the secondary antibody. Negative control: PBS instead of the primary antibody. Hematoxylin was used as a counterstain.

Immunohistochemistry (Formalin/PFA-fixed paraffin-embedded sections) - Anti-p57 Kip2 antibody [SP118] (ab231439)



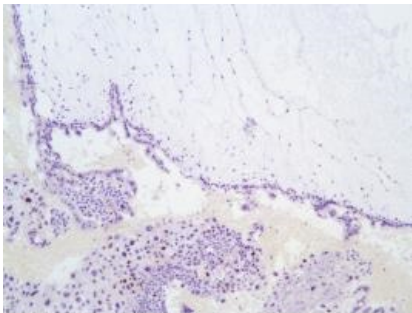
Immunohistochemistry (Formalin/PFA-fixed paraffin-embedded sections) - Anti-p57 Kip2 antibody [SP118] (ab231439)

Formalin-fixed, paraffin-embedded placenta tissue stained for p57 Kip2 using ab231439 at 1/100 dilution in immunohistochemical analysis.



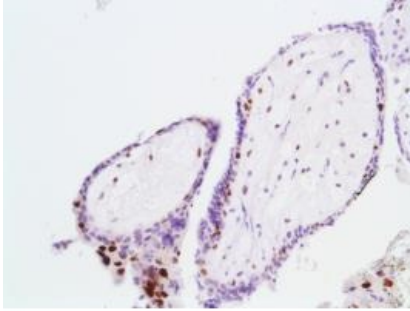
Immunohistochemistry (Formalin/PFA-fixed paraffin-embedded sections) - Anti-p57 Kip2 antibody [SP118] (ab231439)

Formalin-fixed, paraffin-embedded placenta tissue stained for p57 Kip2 using ab231439 at 1/100 dilution in immunohistochemical analysis.



Immunohistochemistry (Formalin/PFA-fixed paraffin-embedded sections) - Anti-p57 Kip2 antibody [SP118] (ab231439)

Formalin-fixed, paraffin-embedded complete hydatidiform mole tissue stained for p57 Kip2 using ab231439 at 1/100 dilution in immunohistochemical analysis.



Formalin-fixed, paraffin-embedded partial hydatidiform mole tissue stained for p57 Kip2 using ab231439 at 1/100 dilution in immunohistochemical analysis.

Immunohistochemistry (Formalin/PFA-fixed paraffin-embedded sections) - Anti-p57 Kip2 antibody [SP118] (ab231439)

Please note: All products are "FOR RESEARCH USE ONLY. NOT FOR USE IN DIAGNOSTIC PROCEDURES"

Our Abpromise to you: Quality guaranteed and expert technical support

- Replacement or refund for products not performing as stated on the datasheet
- Valid for 12 months from date of delivery
- Response to your inquiry within 24 hours
- We provide support in Chinese, English, French, German, Japanese and Spanish
- Extensive multi-media technical resources to help you
- We investigate all quality concerns to ensure our products perform to the highest standards

If the product does not perform as described on this datasheet, we will offer a refund or replacement. For full details of the Abpromise, please visit <https://www.abcam.com/abpromise> or contact our technical team.

Terms and conditions

- Guarantee only valid for products bought direct from Abcam or one of our authorized distributors