

## Product datasheet

# Anti-p63RhoGEF antibody ab127690

4 References 2 Images

### Overview

---

<b>Product name</b>	Anti-p63RhoGEF antibody
<b>Description</b>	Rabbit polyclonal to p63RhoGEF
<b>Host species</b>	Rabbit
<b>Tested applications</b>	<b>Suitable for:</b> WB, IHC-P
<b>Species reactivity</b>	<b>Reacts with:</b> Human
<b>Immunogen</b>	Recombinant fragment corresponding to Human p63RhoGEF aa 200-450. Database link: <a href="#">Q86VW2-1</a>
<b>Positive control</b>	NT2D1, IMR32, U-87 MG and MCF7 whole cell lysates; Human breast carcinoma tissue.
<b>General notes</b>	Keep as concentrated solution.  The Life Science industry has been in the grips of a reproducibility crisis for a number of years. Abcam is leading the way in addressing this with our range of recombinant monoclonal antibodies and knockout edited cell lines for gold-standard validation. Please check that this product meets your needs before purchasing.  If you have any questions, special requirements or concerns, please send us an inquiry and/or contact our Support team ahead of purchase. Recommended alternatives for this product can be found below, along with publications, customer reviews and Q&As

### Properties

---

<b>Form</b>	Liquid
<b>Storage instructions</b>	Shipped at 4°C. Upon delivery aliquot. Store at -20°C or -80°C. Avoid freeze / thaw cycle.
<b>Storage buffer</b>	pH: 7.00 Preservative: 0.01% Thimerosal (merthiolate) Constituents: 1.21% Tris, 0.75% Glycine, 20% Glycerol (glycerin, glycerine)
<b>Purity</b>	Immunogen affinity purified
<b>Clonality</b>	Polyclonal
<b>Isotype</b>	IgG

### Applications

---

## The Abpromise guarantee

Our [Abpromise guarantee](#) covers the use of ab127690 in the following tested applications.

The application notes include recommended starting dilutions; optimal dilutions/concentrations should be determined by the end user.

Application	Abreviews	Notes
WB		1/500 - 1/3000. Predicted molecular weight: 64 kDa.
IHC-P		1/100 - 1/500. Perform heat mediated antigen retrieval with citrate buffer pH 6 before commencing with IHC staining protocol.

## Target

### Function

May play a role in actin cytoskeleton reorganization in different tissues since its activation induces formation of actin stress fibers. It works as a guanine nucleotide exchange factor for Rho family of small GTPases. Links specifically G alpha q/11-coupled receptors to RHOA activation. May be an important regulator of processes involved in axon and dendrite formation. In neurons seems to be an exchange factor primarily for RAC1. Involved in skeletal myogenesis.

### Tissue specificity

Isoform 1 and isoform 2 are highly expressed in excitable tissues, such as brain, heart and muscle. Also detected in kidney and liver.

### Sequence similarities

Contains 1 DH (DBL-homology) domain.  
Contains 1 PH domain.

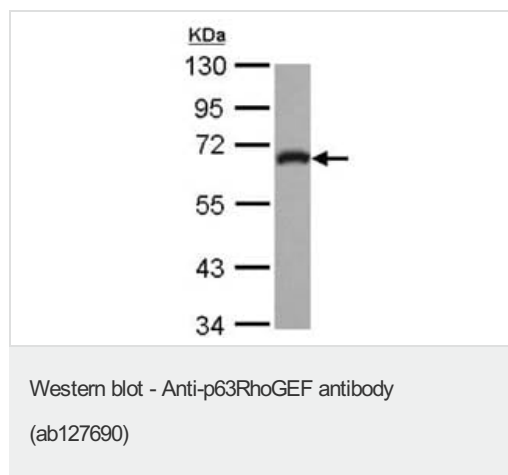
### Domain

The guanine nucleotide exchange activity is autoinhibited by the PH domain.

### Cellular localization

Cell membrane. Cytoplasm > myofibril > sarcomere. Highly colocalizes with actin regions.

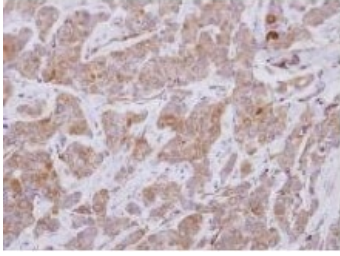
## Images



Anti-p63RhoGEF antibody (ab127690) at 1/1000 dilution + IMR32 whole cell lysate at 30 µg

**Predicted band size: 64 kDa**

10% SDS PAGE



ab127690, at a dilution of 1/250, staining p63RhoGEF in paraffin-embedded Human breast carcinoma tissue by Immunohistochemistry.

Immunohistochemistry (Formalin/PFA-fixed paraffin-embedded sections) - Anti-p63RhoGEF antibody (ab127690)

**Please note:** All products are "FOR RESEARCH USE ONLY. NOT FOR USE IN DIAGNOSTIC PROCEDURES"

### **Our Abpromise to you: Quality guaranteed and expert technical support**

---

- Replacement or refund for products not performing as stated on the datasheet
- Valid for 12 months from date of delivery
- Response to your inquiry within 24 hours
  
- We provide support in Chinese, English, French, German, Japanese and Spanish
- Extensive multi-media technical resources to help you
- We investigate all quality concerns to ensure our products perform to the highest standards

If the product does not perform as described on this datasheet, we will offer a refund or replacement. For full details of the Abpromise, please visit <https://www.abcam.com/abpromise> or contact our technical team.

### **Terms and conditions**

---

- Guarantee only valid for products bought direct from Abcam or one of our authorized distributors