

Product datasheet

Anti-PACAP receptor/ADCYAP1R1 antibody ab216664

2 Images

Overview

| | |
|----------------------------|--|
| Product name | Anti-PACAP receptor/ADCYAP1R1 antibody |
| Description | Rabbit polyclonal to PACAP receptor/ADCYAP1R1 |
| Host species | Rabbit |
| Tested applications | Suitable for: WB |
| Species reactivity | Reacts with: Mouse, Rat |
| Immunogen | Synthetic peptide aa 269-295 conjugated to keyhole limpet haemocyanin. The exact sequence is proprietary. Database link: P41586 |
| Positive control | WB: Rat heart and mouse brain lysates. |
| General notes | This product was previously labelled as PACAP receptor |

Properties

| | |
|-----------------------------|---|
| Form | Liquid |
| Storage instructions | Shipped at 4°C. Store at +4°C short term (1-2 weeks). Upon delivery aliquot. Store at -20°C long term. Avoid freeze / thaw cycle. |
| Storage buffer | Preservative: 0.09% Sodium azide Constituents: 1% BSA, 50% Glycerol |
| Purity | Protein A purified |
| Clonality | Polyclonal |
| Isotype | IgG |

Applications

Our [Abpromise guarantee](#) covers the use of **ab216664** in the following tested applications.

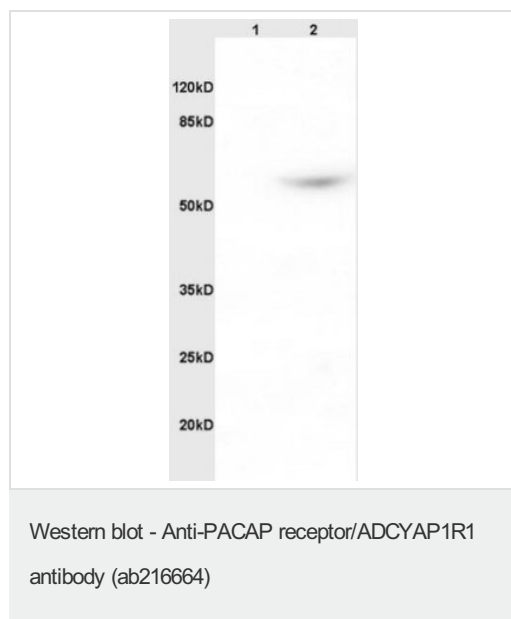
The application notes include recommended starting dilutions; optimal dilutions/concentrations should be determined by the end user.

| Application | Abreviews | Notes |
|-------------|-----------|---|
| WB | | 1/100 - 1/1000. Predicted molecular weight: 53 kDa. |

Target

| | |
|------------------------------|---|
| Function | This is a receptor for PACAP-27 and PACAP-38. The activity of this receptor is mediated by G proteins which activate adenylyl cyclase. May regulate the release of adrenocorticotropin, luteinizing hormone, growth hormone, prolactin, epinephrine, and catecholamine. May play a role in spermatogenesis and sperm motility. Causes smooth muscle relaxation and secretion in the gastrointestinal tract. |
| Tissue specificity | Most abundant in the brain, low expression in the lung, liver, thymus, spleen, pancreas and placenta. |
| Sequence similarities | Belongs to the G-protein coupled receptor 2 family. |
| Cellular localization | Cell membrane. |

Images



All lanes : Anti-PACAP receptor/ADCYAP1R1 antibody (ab216664) at 1/200 dilution

Lane 1 : Rat brain lysate

Lane 2 : Rat heart lysate

Secondary

All lanes : Goat anti-rabbit IgG (H+L), HRP-conjugated at 1/3000 dilution

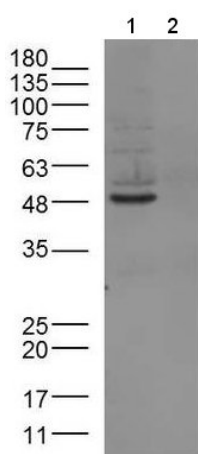
Developed using the ECL technique.

Predicted band size: 53 kDa

Observed band size: 58 kDa

[why is the actual band size different from the predicted?](#)

12% gel



Western blot - Anti-PACAP receptor/ADCYAP1R1 antibody (ab216664)

All lanes : Anti-PACAP receptor/ADCYAP1R1 antibody (ab216664) at 1/300 dilution

Lane 1 : Mouse brain lysate

Lane 2 : A549 cell lysate

Developed using the ECL technique.

Predicted band size: 53 kDa

Please note: All products are "FOR RESEARCH USE ONLY. NOT FOR USE IN DIAGNOSTIC PROCEDURES"

Our Abpromise to you: Quality guaranteed and expert technical support

- Replacement or refund for products not performing as stated on the datasheet
- Valid for 12 months from date of delivery
- Response to your inquiry within 24 hours
- We provide support in Chinese, English, French, German, Japanese and Spanish
- Extensive multi-media technical resources to help you
- We investigate all quality concerns to ensure our products perform to the highest standards

If the product does not perform as described on this datasheet, we will offer a refund or replacement. For full details of the Abpromise, please visit <https://www.abcam.com/abpromise> or contact our technical team.

Terms and conditions

- Guarantee only valid for products bought direct from Abcam or one of our authorized distributors