

Product datasheet

PACSIN1 overexpression 293T lysate (whole cell)  
ab94237

2 Images

Overview

<b>Product name</b>	PACSIN1 overexpression 293T lysate (whole cell)
<b>General notes</b>	ab94237 is a 293T cell transfected lysate in which Human PACSIN1 has been transiently over-expressed using a pCMV-PACSIN1 plasmid. The lysate is provided in 1 x Sample Buffer. <b>Note:</b> For more details about how the transfected lysate was prepared <a href="#">view preparation notes</a>
<b>Tested applications</b>	<b>Suitable for:</b> WB

Properties

<b>Mycoplasma free</b>	Yes
<b>Form</b>	Liquid
<b>Storage instructions</b>	Shipped on dry ice. Upon delivery aliquot and store at -20°C. Avoid freeze / thaw cycles.
<b>Storage buffer</b>	Constituents: 0.01% Bromophenol blue, 2.3% Beta mercaptoethanol, 2% Sodium lauryl sulfate, 0.788% Tris HCl, 10% Glycerol (glycerin, glycerine)
<b>Background</b>	Function: May play a role in vesicle formation and transport. Tissue specificity: Highly expressed in brain and in a lesser extent in heart, pancreas and liver. Similarity: Belongs to the PACSIN family. Contains 1 FCH domain. Contains 1 SH3 domain. PTM: Phosphorylated by casein kinase 2 (CK2) and protein kinase C (PKC).

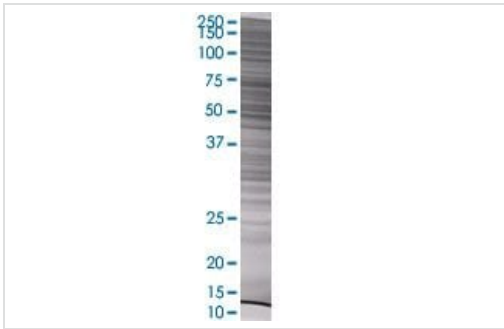
Applications

Our [Abpromise guarantee](#) covers the use of **ab94237** in the following tested applications.

The application notes include recommended starting dilutions; optimal dilutions/concentrations should be determined by the end user.

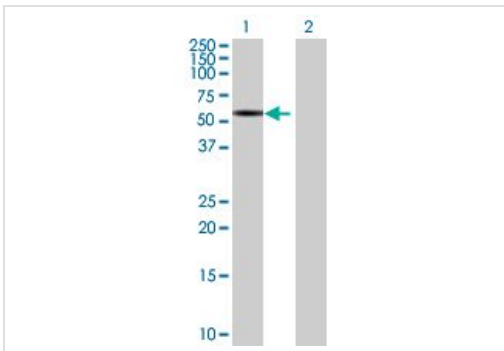
Application	Abreviews	Notes
WB		Use at an assay dependent dilution.

Images



SDS-PAGE - PACSIN1 overexpression 293T lysate  
(whole cell) (ab94237)

ab94237 at 15µg/lane on an SDS-PAGE gel.



Western blot - PACSIN1 overexpression 293T lysate  
(whole cell) (ab94237)

**All lanes :** Anti-PACSIN1 antibody (ab89604) at 1/500 dilution

**Lane 1 :** PACSIN1 overexpression 293T lysate (whole cell)  
(ab94237)

**Lane 2 :** 293T non-transfected lysate

Lysates/proteins at 25 µg per lane.

**Secondary**

**All lanes :** Goat Anti-mouse IgG (H and L) HRP conjugated at  
1/2500 dilution

**Please note:** All products are "FOR RESEARCH USE ONLY. NOT FOR USE IN DIAGNOSTIC PROCEDURES"

**Our Abpromise to you: Quality guaranteed and expert technical support**

- Replacement or refund for products not performing as stated on the datasheet
- Valid for 12 months from date of delivery
- Response to your inquiry within 24 hours
- We provide support in Chinese, English, French, German, Japanese and Spanish
- Extensive multi-media technical resources to help you
- We investigate all quality concerns to ensure our products perform to the highest standards

If the product does not perform as described on this datasheet, we will offer a refund or replacement. For full details of the Abpromise, please visit <https://www.abcam.com/abpromise> or contact our technical team.

**Terms and conditions**

- Guarantee only valid for products bought direct from Abcam or one of our authorized distributors