

## Product datasheet

# Anti-PACSIN2 antibody ab228589

★★★★★ 1 Abreviews 2 Images

### Overview

<b>Product name</b>	Anti-PACSIN2 antibody
<b>Description</b>	Rabbit polyclonal to PACSIN2
<b>Host species</b>	Rabbit
<b>Tested applications</b>	<b>Suitable for:</b> WB, IHC-P
<b>Species reactivity</b>	<b>Reacts with:</b> Human
<b>Immunogen</b>	Recombinant fragment within Human PACSIN2 (internal sequence). The exact sequence is proprietary. Database link: <a href="#">Q9UNF0</a>
<b>Positive control</b>	WB: HEK-293T, A431, HeLa and HepG2 whole cell extracts. IHC-P: Human colon carcinoma tissue.

### Properties

<b>Form</b>	Liquid
<b>Storage instructions</b>	Shipped at 4°C. Store at +4°C short term (1-2 weeks). Upon delivery aliquot. Store at -20°C long term. Avoid freeze / thaw cycle.
<b>Storage buffer</b>	pH: 7.00 Preservative: 0.01% Thimerosal (merthiolate) Constituents: 1.21% Tris, 0.75% Glycine, 20% Glycerol
<b>Purity</b>	Immunogen affinity purified
<b>Clonality</b>	Polyclonal
<b>Isotype</b>	IgG

### Applications

Our [Abpromise guarantee](#) covers the use of **ab228589** in the following tested applications.

The application notes include recommended starting dilutions; optimal dilutions/concentrations should be determined by the end user.

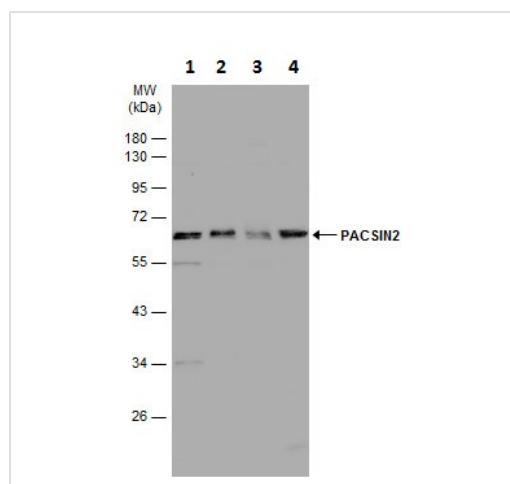
Application	Abreviews	Notes
WB		1/500 - 1/3000. Predicted molecular weight: 56 kDa.

Application	Abreviews	Notes
IHC-P		1/100 - 1/1000.

## Target

<b>Function</b>	May play a role in vesicle formation and transport.
<b>Tissue specificity</b>	Ubiquitously expressed.
<b>Sequence similarities</b>	Belongs to the PACSIN family. Contains 1 FCH domain. Contains 1 SH3 domain.
<b>Post-translational modifications</b>	Phosphorylated by casein kinase 2 (CK2) and protein kinase C (PKC).
<b>Cellular localization</b>	Cytoplasmic vesicle. Vesicle-like cytoplasmic distribution.

## Images



Western blot - Anti-PACSIN2 antibody (ab228589)

**All lanes** : Anti-PACSIN2 antibody (ab228589) at 1/1000 dilution

**Lane 1** : HEK-293T (human epithelial cell line from embryonic kidney transformed with large T antigen) whole cell extract

**Lane 2** : A431 (human epidermoid carcinoma cell line) whole cell extract

**Lane 3** : HeLa (human epithelial cell line from cervix adenocarcinoma) whole cell extract

**Lane 4** : HepG2 (human liver hepatocellular carcinoma cell line) whole cell extract

Lysates/proteins at 30 µg per lane.

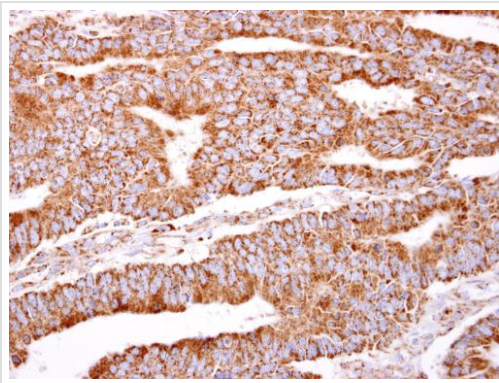
### Secondary

**All lanes** : HRP-conjugated anti-rabbit IgG

Developed using the ECL technique.

**Predicted band size:** 56 kDa

10% SDS-PAGE



Paraffin-embedded human colon carcinoma tissue stained for PACSIN2 with ab228589 at 1/500 dilution in immunohistochemical analysis

Immunohistochemistry (Formalin/PFA-fixed paraffin-embedded sections) - Anti-PACSIN2 antibody (ab228589)

**Please note:** All products are "FOR RESEARCH USE ONLY. NOT FOR USE IN DIAGNOSTIC PROCEDURES"

### **Our Abpromise to you: Quality guaranteed and expert technical support**

---

- Replacement or refund for products not performing as stated on the datasheet
- Valid for 12 months from date of delivery
- Response to your inquiry within 24 hours
- We provide support in Chinese, English, French, German, Japanese and Spanish
- Extensive multi-media technical resources to help you
- We investigate all quality concerns to ensure our products perform to the highest standards

If the product does not perform as described on this datasheet, we will offer a refund or replacement. For full details of the Abpromise, please visit <https://www.abcam.com/abpromise> or contact our technical team.

### **Terms and conditions**

---

- Guarantee only valid for products bought direct from Abcam or one of our authorized distributors