

## Product datasheet

# Anti-PAEP/Glycodelin antibody ab123318

★★★★★ 3 Abreviews 1 Image

### Overview

<b>Product name</b>	Anti-PAEP/Glycodelin antibody
<b>Description</b>	Rabbit polyclonal to PAEP/Glycodelin
<b>Host species</b>	Rabbit
<b>Tested applications</b>	<b>Suitable for:</b> WB
<b>Species reactivity</b>	<b>Reacts with:</b> Human
<b>Immunogen</b>	Synthetic peptide corresponding to Human PAEP/Glycodelin aa 72-101 (internal sequence) conjugated to keyhole limpet haemocyanin. (NP_001018059.1, NP_002562.2)
<b>Positive control</b>	WiDr cell line lysate.
<b>General notes</b>	Previously labelled as Placental Protein 14 / Glycodelin A.

### Properties

<b>Form</b>	Liquid
<b>Storage instructions</b>	Shipped at 4°C. Store at 4°C (up to 6 months). Store at -20°C long term.
<b>Storage buffer</b>	Preservative: 0.09% Sodium azide Constituent: 99% PBS
<b>Purity</b>	Immunogen affinity purified
<b>Purification notes</b>	Purified through a protein A column, followed by peptide affinity purification.
<b>Clonality</b>	Polyclonal
<b>Isotype</b>	IgG

### Applications

Our [Abpromise guarantee](#) covers the use of **ab123318** in the following tested applications.

The application notes include recommended starting dilutions; optimal dilutions/concentrations should be determined by the end user.

Application	Abreviews	Notes
WB	★★★★★	1/100 - 1/500. Predicted molecular weight: 18 kDa.

## Target

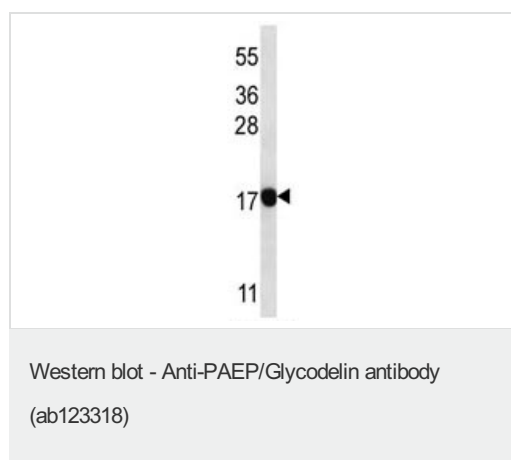
---

<b>Function</b>	This protein is, quantitatively, the main protein synthesized and secreted in the endometrium from mid-luteal phase of the menstrual cycle and during the first semester of pregnancy.
<b>Sequence similarities</b>	Belongs to the calycin superfamily. Lipocalin family.
<b>Post-translational modifications</b>	At least two differentially glycosylated forms are found. Glycodelin-A (GdA) (amniotic fluid) with contraceptive and immunosuppressive activities and glycodelin-S (Gds) (seminal plasma) whose role is not yet known. The gender-specific glycosylation may serve to regulate key process involved in human reproduction.
<b>Cellular localization</b>	Secreted.

---

## Images

---



Anti-PAEP/Glycodelin antibody (ab123318) at 1/100 dilution +  
WiDr cell line lysates at 35 µg

Developed using the ECL technique.

**Predicted band size:** 18 kDa

ab123318 is recognizing isoform 2 of Human PAEP / Glycodelin.

**Please note:** All products are "FOR RESEARCH USE ONLY. NOT FOR USE IN DIAGNOSTIC PROCEDURES"

## Our Abpromise to you: Quality guaranteed and expert technical support

---

- Replacement or refund for products not performing as stated on the datasheet
- Valid for 12 months from date of delivery
- Response to your inquiry within 24 hours
- We provide support in Chinese, English, French, German, Japanese and Spanish
- Extensive multi-media technical resources to help you
- We investigate all quality concerns to ensure our products perform to the highest standards

If the product does not perform as described on this datasheet, we will offer a refund or replacement. For full details of the Abpromise, please visit <https://www.abcam.com/abpromise> or contact our technical team.

## Terms and conditions

---

- Guarantee only valid for products bought direct from Abcam or one of our authorized distributors