

Product datasheet

Anti-PAEP/Glycodelin antibody [EP870Y] ab53289

Recombinant RabMAb

★★★★☆ 1 Abreviews 2 References 2 Images

Overview

Product name	Anti-PAEP/Glycodelin antibody [EP870Y]
Description	Rabbit monoclonal [EP870Y] to PAEP/Glycodelin
Host species	Rabbit
Tested applications	Suitable for: WB Unsuitable for: IHC-P
Species reactivity	Reacts with: Human
Immunogen	Synthetic peptide within Human PAEP/Glycodelin aa 150-250 (C terminal). The exact sequence is proprietary. Database link: P09466
Positive control	WB: TPA-treated K562 cell lysate. Human placenta, kidney, and brain tissue lysates.
General notes	Mouse, Rat: We have preliminary internal testing data to indicate this antibody may not react with these species. Please contact us for more information.

Previously labelled as Placental Protein 14 / Glycodelin A.

This product is a recombinant monoclonal antibody, which offers several advantages including:

- High batch-to-batch consistency and reproducibility
- Improved sensitivity and specificity
- Long-term security of supply
- Animal-free production

For more information [see here](#).

Our RabMAb[®] technology is a patented hybridoma-based technology for making rabbit monoclonal antibodies. For details on our patents, please refer to [RabMAb[®] patents](#).

We are constantly working hard to ensure we provide our customers with best in class antibodies. As a result of this work we are pleased to now offer this antibody in purified format. We are in the process of updating our datasheets. The purified format is designated 'PUR' on our product labels. If you have any questions regarding this update, please contact our Scientific Support team.

Properties

Form	Liquid
Storage instructions	Shipped at 4°C. Store at +4°C short term (1-2 weeks). Upon delivery aliquot. Store at -20°C long term. Avoid freeze / thaw cycle.
Storage buffer	pH: 7.20 Preservative: 0.01% Sodium azide Constituents: 59% PBS, 40% Glycerol, 0.05% BSA
Purity	Protein A purified
Clonality	Monoclonal
Clone number	EP870Y
Isotype	IgG

Applications

Our [Abpromise guarantee](#) covers the use of **ab53289** in the following tested applications.

The application notes include recommended starting dilutions; optimal dilutions/concentrations should be determined by the end user.

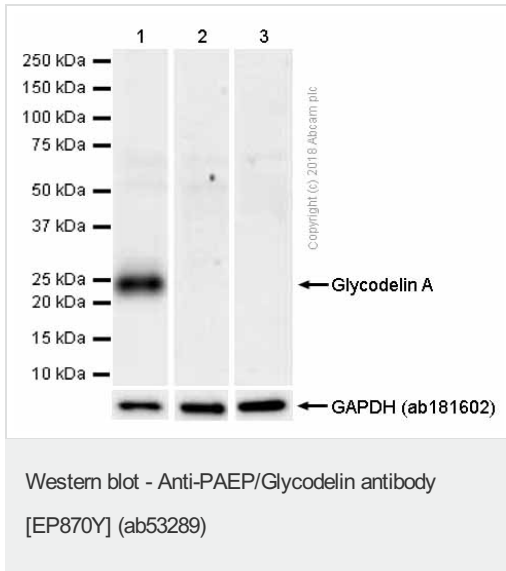
Application	Abreviews	Notes
WB		1/1000 - 1/10000. Detects a band of approximately 21 kDa (predicted molecular weight: 21 kDa).

Application notes Is unsuitable for IHC-P.

Target

Function	This protein is, quantitatively, the main protein synthesized and secreted in the endometrium from mid-luteal phase of the menstrual cycle and during the first semester of pregnancy.
Sequence similarities	Belongs to the calycin superfamily. Lipocalin family.
Post-translational modifications	At least two differentially glycosylated forms are found. Glycodelin-A (GdA) (amniotic fluid) with contraceptive and immunosuppressive activities and glycodelin-S (Gds) (seminal plasma) whose role is not yet known. The gender-specific glycosylation may serve to regulate key process involved in human reproduction.
Cellular localization	Secreted.

Images



All lanes : Anti-PAEP/Glycodelin antibody [EP870Y] (ab53289) at 0.3 µg/ml (purified)

Lane 1 : Human placenta lysates

Lane 2 : Human kidney lysates

Lane 3 : Human brain lysates

Lysates/proteins at 20 µg per lane.

Secondary

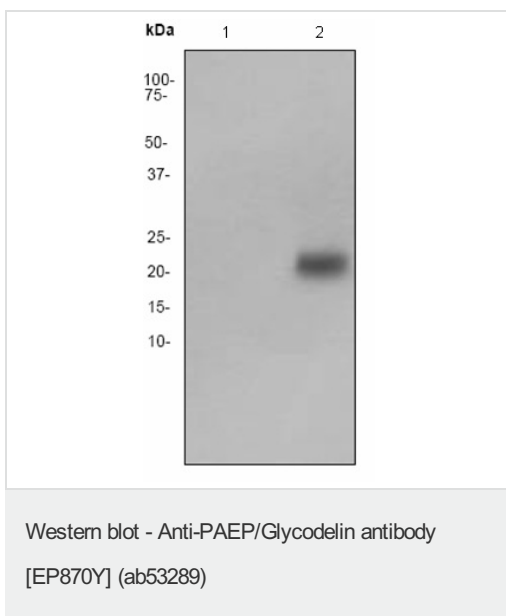
All lanes : Goat Anti-Rabbit IgG H&L (HRP) (ab97051) at 1/20000 dilution

Predicted band size: 21 kDa

Observed band size: 24 kDa

[why is the actual band size different from the predicted?](#)

Blocking and diluting buffer: 5% NFDM/TBST.



All lanes : Anti-PAEP/Glycodelin antibody [EP870Y] (ab53289) at 1/500 dilution

Lane 1 : K562 (Human chronic myelogenous leukemia cell line from bone marrow) cell lysate

Lane 2 : TPA-treated K562 (Human chronic myelogenous leukemia cell line from bone marrow) cell lysate

Secondary

All lanes : Goat anti-rabbit HRP at 1/2000 dilution

Predicted band size: 21 kDa

Observed band size: 21 kDa

Please note: All products are "FOR RESEARCH USE ONLY. NOT FOR USE IN DIAGNOSTIC PROCEDURES"

Our Abpromise to you: Quality guaranteed and expert technical support

- Replacement or refund for products not performing as stated on the datasheet
- Valid for 12 months from date of delivery
- Response to your inquiry within 24 hours

- We provide support in Chinese, English, French, German, Japanese and Spanish
- Extensive multi-media technical resources to help you
- We investigate all quality concerns to ensure our products perform to the highest standards

If the product does not perform as described on this datasheet, we will offer a refund or replacement. For full details of the Abpromise, please visit <https://www.abcam.com/abpromise> or contact our technical team.

Terms and conditions

- Guarantee only valid for products bought direct from Abcam or one of our authorized distributors