

Product datasheet

Anti-PAK1 (phospho S20) antibody [EP655Y] - BSA and Azide free ab235117

Recombinant RabMAb

1 Image

Overview

Product name	Anti-PAK1 (phospho S20) antibody [EP655Y] - BSA and Azide free
Description	Rabbit monoclonal [EP655Y] to PAK1 (phospho S20) - BSA and Azide free
Host species	Rabbit
Tested applications	Suitable for: WB Unsuitable for: Flow Cyt, IHC-P or IP
Species reactivity	Reacts with: Human
Immunogen	Synthetic peptide corresponding to Human PAK1.
Positive control	WB: HeLa cell lysate.
General notes	<p>ab235117 is the carrier-free version of ab51244 This format is designed for use in antibody labeling, including fluorochromes, metal isotopes, oligonucleotides, enzymes.</p> <p>Our carrier-free formats are supplied in a buffer free of BSA, sodium azide and glycerol for higher conjugation efficiency.</p> <p>Use our conjugation kits for antibody conjugates that are ready-to-use in as little as 20 minutes with <1 minute hands-on-time and 100% antibody recovery: available for fluorescent dyes, HRP, biotin and gold.</p> <p>Ab235117 is compatible with the Maxpar® Antibody Labeling Kit from Fluidigm. <i>Maxpar® is a trademark of Fluidigm Canada Inc.</i></p> <p>Mouse, Rat: We have preliminary internal testing data to indicate this antibody may not react with these species. Please contact us for more information.</p>

Properties

Form	Liquid
Storage instructions	Shipped at 4°C. Store at +4°C short term (1-2 weeks). Upon delivery aliquot. Store at -20°C. Avoid freeze / thaw cycle.
Storage buffer	Constituent: PBS

Purity	Protein A purified
Clonality	Monoclonal
Clone number	EP655Y
Isotype	IgG

Applications

Our [Abpromise guarantee](#) covers the use of **ab235117** in the following tested applications.

The application notes include recommended starting dilutions; optimal dilutions/concentrations should be determined by the end user.

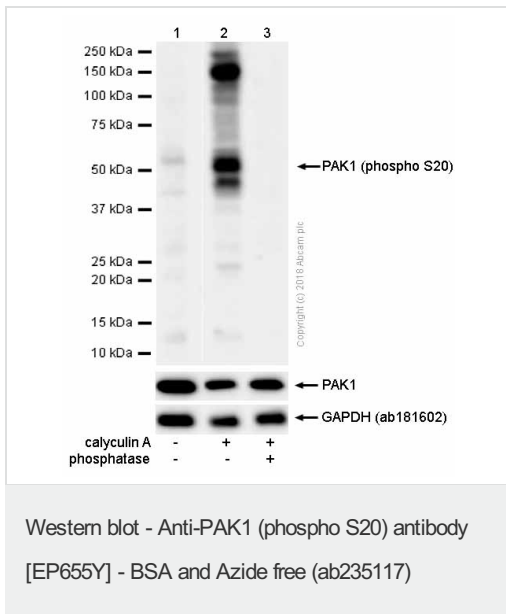
Application	Abreviews	Notes
WB		Use at an assay dependent concentration. Detects a band of approximately 61 kDa (predicted molecular weight: 61 kDa).

Application notes Is unsuitable for Flow Cyt, IHC-P or IP.

Target

Function	The activated kinase acts on a variety of targets. Likely to be the GTPase effector that links the Rho-related GTPases to the JNK MAP kinase pathway. Activated by CDC42 and RAC1. Involved in dissolution of stress fibers and reorganization of focal complexes. Involved in regulation of microtubule biogenesis through phosphorylation of TBCB. Activity is inhibited in cells undergoing apoptosis, potentially due to binding of CDC2L1 and CDC2L2.
Sequence similarities	Belongs to the protein kinase superfamily. STE Ser/Thr protein kinase family. STE20 subfamily. Contains 1 CRIB domain. Contains 1 protein kinase domain.
Post-translational modifications	Autophosphorylated when activated by CDC42/p21 and RAC1.
Cellular localization	Cytoplasm. Cell junction > focal adhesion. Recruited to focal adhesions upon activation.

Images



All lanes : Anti-PAK1 (phospho S20) antibody [EP655Y] (ab51244) at 1/1000 dilution

Lane 1 : HeLa (Human cervix adenocarcinoma epithelial cell) whole cell lysates with 5% NFD/MTBST

Lane 2 : HeLa (Human cervix adenocarcinoma epithelial cell) treated with 100mM calyculin A for 30 minutes whole cell lysates with 5% NFD/MTBST

Lane 3 : HeLa (Human cervix adenocarcinoma epithelial cell) treated with 100mM calyculin A for 30 minutes. Then the membrane was incubated with phosphatase with 5% NFD/MTBST

Lysates/proteins at 15 µg per lane.

Secondary

All lanes : Goat Anti-Rabbit IgG H&L (HRP) (ab97051) at 1/20000 dilution

Predicted band size: 61 kDa

This data was developed using the same antibody clone in a different buffer formulation containing PBS, BSA, glycerol, and sodium azide (ab51244).

We are unable to define the extra bands.

Please note: All products are "FOR RESEARCH USE ONLY. NOT FOR USE IN DIAGNOSTIC PROCEDURES"

Our Abpromise to you: Quality guaranteed and expert technical support

- Replacement or refund for products not performing as stated on the datasheet
- Valid for 12 months from date of delivery
- Response to your inquiry within 24 hours
- We provide support in Chinese, English, French, German, Japanese and Spanish
- Extensive multi-media technical resources to help you
- We investigate all quality concerns to ensure our products perform to the highest standards

If the product does not perform as described on this datasheet, we will offer a refund or replacement. For full details of the Abpromise, please visit <https://www.abcam.com/abpromise> or contact our technical team.

Terms and conditions

- Guarantee only valid for products bought direct from Abcam or one of our authorized distributors