

## Product datasheet

# Anti-Palladin antibody [EPR9460(B)] ab154827

Recombinant RabMAb

[2 Images](#)

### Overview

<b>Product name</b>	Anti-Palladin antibody [EPR9460(B)]
<b>Description</b>	Rabbit monoclonal [EPR9460(B)] to Palladin
<b>Host species</b>	Rabbit
<b>Tested applications</b>	<b>Suitable for:</b> WB, Flow Cyt <b>Unsuitable for:</b> ICC, IHC-P or IP
<b>Species reactivity</b>	<b>Reacts with:</b> Human
<b>Immunogen</b>	Synthetic peptide corresponding to residues near the N terminus of Human Palladin (UniProt Q8WX93).
<b>Positive control</b>	HeLa, 293T, PC3 and Caco-2 cell lysates; HeLa cells.
<b>General notes</b>	Mouse, Rat: We have preliminary internal testing data to indicate this antibody may not react with these species. Please contact us for more information.

This product is a recombinant monoclonal antibody, which offers several advantages including:

- High batch-to-batch consistency and reproducibility
- Improved sensitivity and specificity
- Long-term security of supply
- Animal-free production

For more information [see here](#).

Our RabMAb<sup>®</sup> technology is a patented hybridoma-based technology for making rabbit monoclonal antibodies. For details on our patents, please refer to [RabMAb<sup>®</sup> patents](#).

### Properties

<b>Form</b>	Liquid
<b>Storage instructions</b>	Shipped at 4°C. Store at -20°C.
<b>Storage buffer</b>	Preservative: 0.01% Sodium azide Constituents: 9% PBS, 40% Glycerol, 0.05% BSA, 50% Tissue culture supernatant
<b>Purity</b>	Tissue culture supernatant
<b>Clonality</b>	Monoclonal

**Clone number**                      EPR9460(B)

**Isotype**                                IgG

## Applications

---

Our [Abpromise guarantee](#) covers the use of **ab154827** in the following tested applications.

The application notes include recommended starting dilutions; optimal dilutions/concentrations should be determined by the end user.

Application	Abreviews	Notes
WB		1/1000 - 1/10000. Predicted molecular weight: 151 kDa.
Flow Cyt		1/10 - 1/100. <a href="#">ab172730</a> - Rabbit monoclonal IgG, is suitable for use as an isotype control with this antibody.

---

**Application notes**                      Is unsuitable for ICC,IHC-P or IP.

## Target

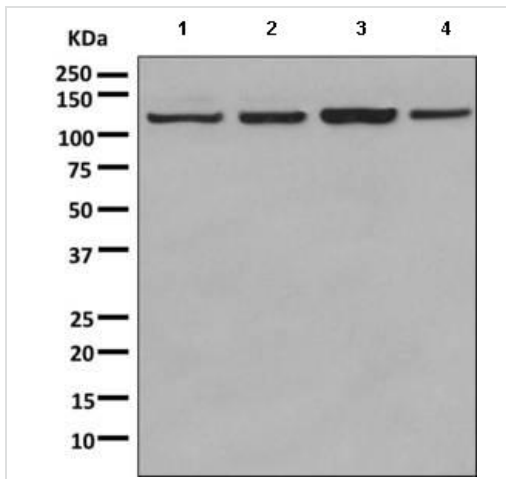
---

**Relevance**                                Cytoskeletal protein required for organization of normal actin cytoskeleton. Roles in establishing cell morphology, motility, cell adhesion and cell-extracellular matrix interactions in a variety of cell types. May function as a scaffolding molecule with the potential to influence both actin polymerization and the assembly of existing actin filaments into higher-order arrays. Binds to proteins that bind to either monomeric or filamentous actin. Localizes at sites where active actin remodeling takes place, such as lamellipodia and membrane ruffles. Different isoforms may have functional differences. Involved in the control of morphological and cytoskeletal changes associated with dendritic cell maturation. Involved in targeting ACTN to specific subcellular foci (from SwissProt).

**Cellular localization**                      Cytoplasm, cytoskeleton. Note: Localizes to stress fibers and Z disks. Cell junction, focal adhesion. Cell projection, ruffle. Cell projection, lamellipodium.

## Images

---



Western blot - Anti-Palladin antibody [EPR9460(B)] (ab154827)

**All lanes :** Anti-Palladin antibody [EPR9460(B)] (ab154827) at 1/1000 dilution

**Lane 1 :** HeLa cell lysate

**Lane 2 :** 293T cell lysate

**Lane 3 :** PC3 cell lysate

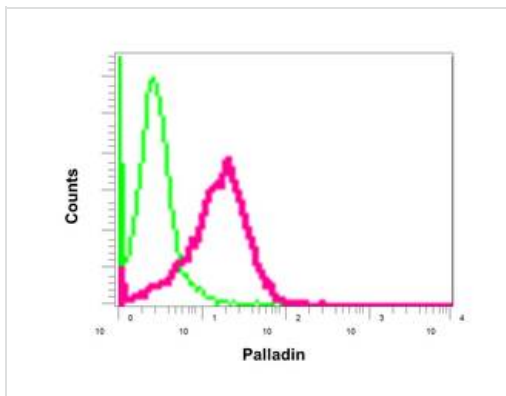
**Lane 4 :** Caco-2 cell lysate

Lysates/proteins at 10 µg per lane.

**Secondary**

**All lanes :** Goat anti-rabbit HRP at 1/2000 dilution

**Predicted band size:** 151 kDa



Flow Cytometry - Anti-Palladin antibody [EPR9460(B)] (ab154827)

Flow cytometric analysis of permeabilized HeLa cells labeling Palladin with ab154827 at 1/10 dilution (red) compared to a rabbit IgG negative control (green).

**Please note:** All products are "FOR RESEARCH USE ONLY. NOT FOR USE IN DIAGNOSTIC PROCEDURES"

**Our Abpromise to you: Quality guaranteed and expert technical support**

- Replacement or refund for products not performing as stated on the datasheet
- Valid for 12 months from date of delivery
- Response to your inquiry within 24 hours
- We provide support in Chinese, English, French, German, Japanese and Spanish
- Extensive multi-media technical resources to help you
- We investigate all quality concerns to ensure our products perform to the highest standards

If the product does not perform as described on this datasheet, we will offer a refund or replacement. For full details of the Abpromise, please visit <https://www.abcam.com/abpromise> or contact our technical team.

## Terms and conditions

---

- Guarantee only valid for products bought direct from Abcam or one of our authorized distributors