

Product datasheet

# Anti-pan Cadherin antibody [EPR1792Y] - Intercellular Junction Marker ab51034

Recombinant RabMAb

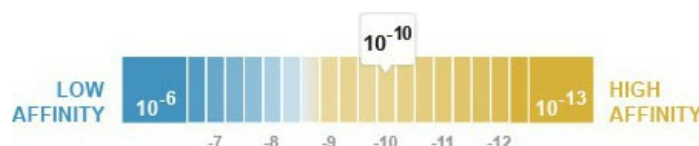
★★★★★ 3 Abreviews 11 References 4 Images

Overview

<b>Product name</b>	Anti-pan Cadherin antibody [EPR1792Y] - Intercellular Junction Marker
<b>Description</b>	Rabbit monoclonal [EPR1792Y] to pan Cadherin - Intercellular Junction Marker
<b>Host species</b>	Rabbit
<b>Tested applications</b>	<b>Suitable for:</b> WB, IP, Flow Cyt, IHC-P, ICC/IF
<b>Species reactivity</b>	<b>Reacts with:</b> Mouse, Rat, Human
<b>Immunogen</b>	Synthetic peptide within Human pan Cadherin (C terminal). The exact sequence is proprietary. Database link: <a href="#">P19022</a>
<b>Positive control</b>	C6 cell lysate, human cervical carcinoma tissue or HeLa cells.
<b>General notes</b>	Our RabMAb <sup>®</sup> technology is a patented hybridoma-based technology for making rabbit monoclonal antibodies. For details on our patents, please refer to <a href="#">RabMAb<sup>®</sup> patents</a>  This product is a recombinant rabbit monoclonal antibody.

Properties

<b>Form</b>	Liquid
<b>Storage instructions</b>	Shipped at 4°C. Store at +4°C short term (1-2 weeks). Upon delivery aliquot. Store at -20°C. Avoid freeze / thaw cycle.
<b>Dissociation constant (K<sub>D</sub>)</b>	K <sub>D</sub> = 6.10 x 10 <sup>-10</sup> M



[Learn more about K<sub>D</sub>](#)

<b>Storage buffer</b>	pH: 7.20 Preservative: 0.05% Sodium azide Constituents: 0.1% BSA, 40% Glycerol, 9.85% Tris glycine, 50% Tissue culture supernatant
<b>Purity</b>	Tissue culture supernatant
<b>Clonality</b>	Monoclonal

Clone number                      EPR1792Y

Isotype                               IgG

## Applications

---

Our [Abpromise guarantee](#) covers the use of **ab51034** in the following tested applications.

The application notes include recommended starting dilutions; optimal dilutions/concentrations should be determined by the end user.

Application	Abreviews	Notes
WB	★★★★★	1/50000. Detects a band of approximately 140 kDa (predicted molecular weight: 100 kDa).
IP		1/40.
Flow Cyt		1/30. <a href="#">ab172730</a> - Rabbit monoclonal IgG, is suitable for use as an isotype control with this antibody.
IHC-P	★★★★★	1/100. Perform heat mediated antigen retrieval before commencing with IHC staining protocol.
ICC/IF	★★★★★	1/100 - 1/250.

## Target

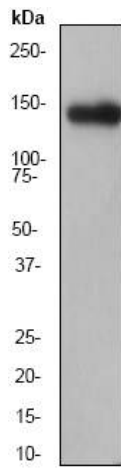
---

### Relevance

Cadherins are members of a multigene family of single chain glycoprotein receptors mediating calcium dependent cell-cell adhesion. They play an important role in the growth and development of cells via the mechanisms of control of tissue architecture and the maintenance of tissue integrity. Cadherins are expressed in a tissue specific manner and are required for assembly of cells into solid tissue. Individual cadherin molecules are known to co-operate with each other to form a linear cell adhesion zipper. In adhesion junctions cadherins are bound to beta and gamma catenins which in turn bind to alpha catenin, an actin binding protein. Cadherins play an important part in tumor invasion and metastasis.

## Images

---



Western blot - Anti-pan Cadherin antibody [EPR1792Y] - Intercellular Junction Marker (ab51034)

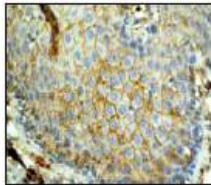
Anti-pan Cadherin antibody [EPR1792Y] - Intercellular Junction Marker (ab51034) at 1/50000 dilution + C6 cell lysate at 10 µg

**Secondary**

Goat anti-Rabbit HRP labeled. at 1/2000 dilution

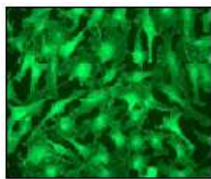
**Predicted band size:** 100 kDa

**Observed band size:** 140 kDa



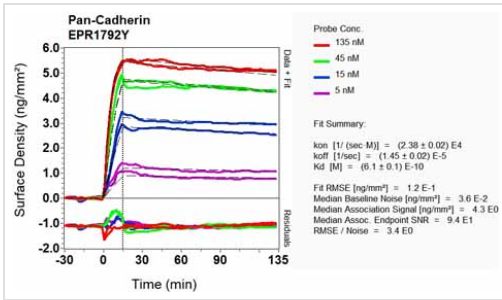
Immunohistochemistry (Formalin/PFA-fixed paraffin-embedded sections) - Anti-pan Cadherin antibody [EPR1792Y] - Intercellular Junction Marker (ab51034)

Ab51034 (1/100) staining N Cadherin in human cervical carcinoma tissue by immunohistochemistry using paraffin embedded tissue.



Immunocytochemistry/ Immunofluorescence - Anti-pan Cadherin antibody [EPR1792Y] - Intercellular Junction Marker (ab51034)

Immunofluorescent staining of HeLa cells using ab51034 (1/100).



Other - Anti-pan Cadherin antibody [EPR1792Y] -  
Intercellular Junction Marker (ab51034)

Equilibrium disassociation constant ( $K_D$ )

Learn more about  $K_D$

[Click here to learn more about  \$K\_D\$](#)

**Please note:** All products are "FOR RESEARCH USE ONLY AND ARE NOT INTENDED FOR DIAGNOSTIC OR THERAPEUTIC USE"

### Our Abpromise to you: Quality guaranteed and expert technical support

- Replacement or refund for products not performing as stated on the datasheet
- Valid for 12 months from date of delivery
- Response to your inquiry within 24 hours
- We provide support in Chinese, English, French, German, Japanese and Spanish
- Extensive multi-media technical resources to help you
- We investigate all quality concerns to ensure our products perform to the highest standards

If the product does not perform as described on this datasheet, we will offer a refund or replacement. For full details of the Abpromise, please visit <https://www.abcam.com/abpromise> or contact our technical team.

### Terms and conditions

- Guarantee only valid for products bought direct from Abcam or one of our authorized distributors