

## Product datasheet

# Anti-pan Cytokeratin antibody [C-11] (Phycoerythrin) ab52460

★★★★★ 2 Abreviews 6 References 1 Image

### Overview

|                            |  |
|----------------------------|--|
| <b>Product name</b>        | Anti-pan Cytokeratin antibody [C-11] (Phycoerythrin)                         |
| <b>Description</b>         | Mouse monoclonal [C-11] to pan Cytokeratin (Phycoerythrin)                   |
| <b>Host species</b>        | Mouse  |
| <b>Conjugation</b>         | Phycoerythrin. Ex: 488nm, Em: 575nm  |
| <b>Specificity</b>         | ab52460 recognises Cytokeratin peptides 4, 5, 6, 8, 10, 13, 18.              |
| <b>Tested applications</b> | <b>Suitable for:</b> Flow Cyt  |
| <b>Species reactivity</b>  | Reacts with all species (recognized epitope conserved within all species)    |
| <b>Immunogen</b>           | Keratin-enriched preparation from human epidermoid carcinoma cell line A431. |

### Properties

|                             |  |
|-----------------------------|--|
| <b>Form</b>                 | Liquid   |
| <b>Storage instructions</b> | Shipped at 4°C. Store at +4°C.   |
| <b>Storage buffer</b>       | Preservative: 0.097% Sodium azide<br>Constituents: 0.2% BSA, PBS   |
| <b>Purity</b>               | >95% by SDS-PAGE   |
| <b>Purification notes</b>   | Prior to conjugation, this antibody was purified by Protein A affinity chromatography. The purified antibody is conjugated with R-Phycoerythrin (PE) under optimum conditions. The conjugate is purified by size-exclusion chromatography. |
| <b>Clonality</b>            | Monoclonal   |
| <b>Clone number</b>         | C-11   |
| <b>Isotype</b>              | IgG1   |

### Applications

Our [Abpromise guarantee](#) covers the use of **ab52460** in the following tested applications.

The application notes include recommended starting dilutions; optimal dilutions/concentrations should be determined by the end user.

| Application | Abreviews | Notes |
|-------------|-----------|-------|
|-------------|-----------|-------|

|          |       |   |
|----------|-------|---|
| Flow Cyt | ★★★★★ | Use 1-2µl for 10 <sup>6</sup> cells.<br>(in a 100µl cell suspension). |
|----------|-------|---|

[ab91357](#) - Mouse monoclonal IgG1, is suitable for use as an isotype control with this antibody.

## Target

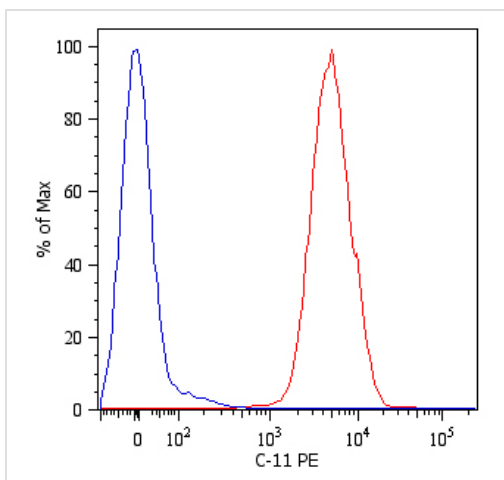
### Relevance

Cytokeratins, a group comprising at least 29 different proteins, are characteristic of epithelial and trichocytic cells. Cytokeratins 1, 4, 5, 6, and 8 are members of the type II neutral to basic subfamily. Monoclonal anti cytokeratins are specific markers of epithelial cell differentiation and have been widely used as tools in tumor identification and classification. Monoclonal Anti Pan Cytokeratin (mixture) is a broadly reactive reagent, which recognizes epitopes present in most human epithelial tissues. It facilitates typing of normal, metaplastic and neoplastic cells. Synergy between the various components results in staining amplification. This enables identification of cells, which would otherwise be stained only marginally. The mixture may aid in the discrimination of carcinomas and nonepithelial tumors such as sarcomas, lymphomas and neural tumors. It is also useful in detecting micrometastases in lymph nodes, bone marrow and other tissues and for determining the origin of poorly differentiated tumors. There are two types of cytokeratins the acidic type I cytokeratins and the basic or neutral type II cytokeratins. Cytokeratins are usually found in pairs comprising a type I cytokeratin and a type II cytokeratin. Usually the type II cytokeratins are 8kD larger than their type I counterparts.

### Cellular localization

Cytoplasmic

## Images



Intracellular flow cytometry analysis of cytokeratin expression in HT-29 human Caucasian colon adenocarcinoma cell line using ab52460.

Recommended conc. 0.5 µg/ml

Overlay with Isotype mouse IgG1 control.

Flow Cytometry - Anti-pan Cytokeratin antibody [C-11] (Phycoerythrin) (ab52460)

**Please note:** All products are "FOR RESEARCH USE ONLY AND ARE NOT INTENDED FOR DIAGNOSTIC OR THERAPEUTIC USE"

### **Our Abpromise to you: Quality guaranteed and expert technical support**

---

- Replacement or refund for products not performing as stated on the datasheet
- Valid for 12 months from date of delivery
- Response to your inquiry within 24 hours
  
- We provide support in Chinese, English, French, German, Japanese and Spanish
- Extensive multi-media technical resources to help you
- We investigate all quality concerns to ensure our products perform to the highest standards

If the product does not perform as described on this datasheet, we will offer a refund or replacement. For full details of the Abpromise, please visit <https://www.abcam.com/abpromise> or contact our technical team.

### **Terms and conditions**

---

- Guarantee only valid for products bought direct from Abcam or one of our authorized distributors