

Product datasheet

Anti-pan Lamin antibody [X67, X167, X233] ab20740

★★★★☆ 2 Abreviews 4 References 2 Images

Overview

Product name	Anti-pan Lamin antibody [X67, X167, X233]
Description	Mouse monoclonal [X67, X167, X233] to pan Lamin
Host species	Mouse
Specificity	Lamins do not appear to be universally distributed among different cell and tissue types. ab20740 recognizes the karyoskeleton, i.e. the intermediate filament proteins of the nucleus. Reacts with Lamin isotypes of Mr 60-75 kDa (LA, LI, LII, LIII, B1, B2, C). Other cell/tissue types have not been tested.
Tested applications	Suitable for: ICC/IF
Species reactivity	Reacts with: Mouse, Cow, Human, Xenopus laevis, Kangaroo, Rainbow trout
Immunogen	cell preparation: Nuclear pore complex-lamina fraction of Xenopus laevis (XLKE-A6 cells).
General notes	<p>Reproducibility is key to advancing scientific discovery and accelerating scientists' next breakthrough.</p> <p>Abcam is leading the way with our range of recombinant antibodies, knockout-validated antibodies and knockout cell lines, all of which support improved reproducibility.</p> <p>We are also planning to innovate the way in which we present recommended applications and species on our product datasheets, so that only applications & species that have been tested in our own labs, our suppliers or by selected trusted collaborators are covered by our Abpromise™ guarantee.</p> <p>In preparation for this, we have started to update the applications & species that this product is Abpromise guaranteed for.</p> <p>We are also updating the applications & species that this product has been “predicted to work with,” however this information is not covered by our Abpromise guarantee.</p> <p>Applications & species from publications and Abreviews that have not been tested in our own labs or in those of our suppliers are not covered by the Abpromise guarantee.</p> <p>Please check that this product meets your needs before purchasing. If you have any questions, special requirements or concerns, please send us an inquiry and/or contact our Support team ahead of purchase. Recommended alternatives for this product can be found below, as well as customer reviews and Q&As.</p>

Properties

Form	Liquid
Storage instructions	Shipped at 4°C. Store at +4°C short term (1-2 weeks). Store at -20°C or -80°C. Avoid freeze / thaw cycle.
Storage buffer	Preservative: 0.09% Sodium azide Constituent: Tissue culture supernatant
Purity	Tissue culture supernatant
Clonality	Monoclonal
Clone number	X67, X167, X233
Myeloma	unknown
Isotype	IgG1
Light chain type	unknown

Applications

Our [Abpromise guarantee](#) covers the use of **ab20740** in the following tested applications.

The application notes include recommended starting dilutions; optimal dilutions/concentrations should be determined by the end user.

Application	Abreviews	Notes
ICC/IF	★★★★☆	

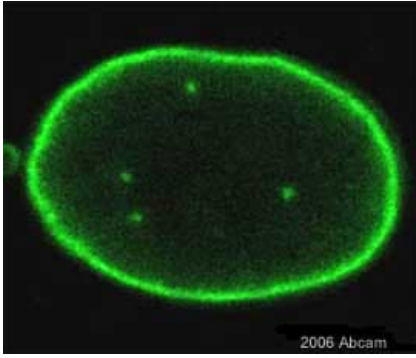
Application notes ICC/IF: Used at a dilution of 1/50 for 16 hrs (see Abreview for further information). WB: Use at an assay dependent dilution. Predicted molecular weight: 60-75 kDa. Dilution optimised using Chromogenic detection. Not yet tested in other applications. Optimal dilutions/concentrations should be determined by the end user.

Target

Relevance Lamins are components of the nuclear lamina, a fibrous layer on the nucleoplasmic side of the inner nuclear membrane, which is thought to provide a framework for the nuclear envelope and may also interact with chromatin.

Cellular localization Nuclear

Images

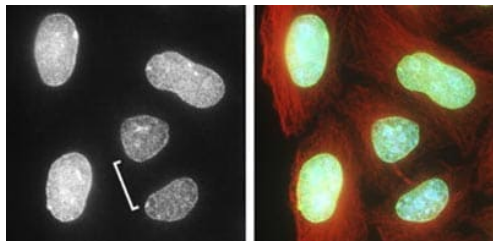


Immunocytochemistry/ Immunofluorescence - Anti-pan Lamin antibody [X67, X167, X233] (ab20740)

ab20740 at a 1/50 dilution staining human U2 OS cells by Immunocytochemistry/Immunofluorescence. The cells were Paraformaldehyde fixed and incubated with the antibody for 16 hours. Bound antibody was detected using an Alexa- Fluor® 488 conjugated goat anti-mouse IgG.

The antibody was found to stain equally well when used at a dilution of 1/250.

This image is courtesy of an Abreview submitted by **Chi Tang** on **6 April 2006**.



Immunocytochemistry/ Immunofluorescence - Anti-pan Lamin antibody [X67, X167, X233] (ab20740)

Image from Mackay DR et al, J Cell Biol. 2010 Nov 29;191(5):923-31. Epub 2010 Nov 22, Fig 1. DOI 10.1083/jcb.201007124

ab20740 staining pan Lamin in HeLa cells by Immunocytochemistry/ Immunofluorescence.

Left image shows pan Lamin.

Right image shows overlay of pan lamin (green), tubulin (red) and DNA (blue).

Please note: All products are "FOR RESEARCH USE ONLY. NOT FOR USE IN DIAGNOSTIC PROCEDURES"

Our Abpromise to you: Quality guaranteed and expert technical support

- Replacement or refund for products not performing as stated on the datasheet
- Valid for 12 months from date of delivery
- Response to your inquiry within 24 hours
- We provide support in Chinese, English, French, German, Japanese and Spanish
- Extensive multi-media technical resources to help you
- We investigate all quality concerns to ensure our products perform to the highest standards

If the product does not perform as described on this datasheet, we will offer a refund or replacement. For full details of the Abpromise, please visit <https://www.abcam.com/abpromise> or contact our technical team.

Terms and conditions

- Guarantee only valid for products bought direct from Abcam or one of our authorized distributors