

Product datasheet

Anti-Pan-SAPAP antibody ab67224

1 Abreviews 3 Images

Overview

Product name	Anti-Pan-SAPAP antibody
Description	Rabbit polyclonal to Pan-SAPAP
Host species	Rabbit
Specificity	Please note that the immunogen that generated ab67224 shares some sequence with other SAPAP/DLGAP proteins, including SAPAP1, SAPAP2, and SAPAP4, and preliminary data suggests this antibody may not be specific for SAPAP3.
Tested applications	Suitable for: WB, ICC/IF, IHC-P
Species reactivity	Reacts with: Mouse, Rat, Human
Immunogen	Synthetic peptide corresponding to Human Pan-SAPAP.

Properties

Form	Liquid
Storage instructions	Shipped at 4°C. Store at +4°C.
Storage buffer	Preservative: 0.02% Sodium azide Constituent: PBS
Purity	Immunogen affinity purified
Clonality	Polyclonal
Isotype	IgG

Applications

Our [Abpromise guarantee](#) covers the use of **ab67224** in the following tested applications.

The application notes include recommended starting dilutions; optimal dilutions/concentrations should be determined by the end user.

Application	Abreviews	Notes
WB		Use a concentration of 1 - 2 µg/ml. Detects a band of approximately 106 kDa (predicted molecular weight: 106 kDa).
ICC/IF		Use a concentration of 20 µg/ml.

Application	Abreviews	Notes
IHC-P		Use at an assay dependent concentration.

Target

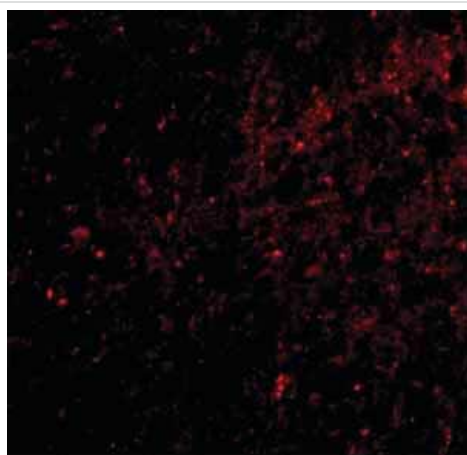
Relevance

SAPAP3, (DLGAP3) is a member of a protein family whose members specifically interact with PSD-95/SAP90, a membrane-associated guanylate kinase localized at postsynaptic density (PSD) in neuronal cells. Like the other SAPAP proteins, SAPAP3 is thought to be an adaptor protein that also interacts with different synaptic scaffolding proteins, cytoskeletal and signaling components, such as focal adhesion kinase (FAK) and proline-rich tyrosine kinase 2 (PYK2). Both SAPAP3 protein and mRNA are targeted to dendrites, whereas SAPAP1, -2, and -4 mRNAs are detected mainly in cell bodies. Recent experiments have suggested that SAPAP3 may be involved in obsessive-compulsive disorder (OCD), as mice lacking SAPAP3 exhibited OCD-like symptoms which could be relieved by lentiviral-mediated selective expression of SAPAP3 in the striatum of SAPAP3-mutant mice. At least two isoforms are known to exist.

Cellular localization

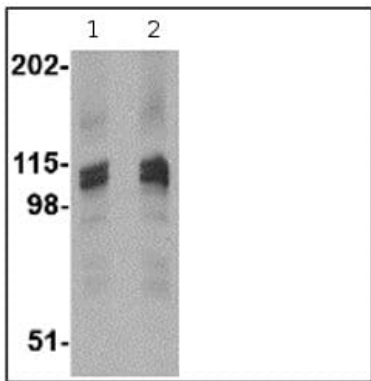
Cell Membrane

Images



Immunofluorescence of Pan-SAPAP in Human brain tissue with ab67224 at 20 ug/mL.

Immunocytochemistry/ Immunofluorescence - Anti-Pan-SAPAP antibody (ab67224)



Western blot - Anti-Pan-SAPAP antibody (ab67224)

Lane 1 : Anti-Pan-SAPAP antibody (ab67224) at 1 µg/ml

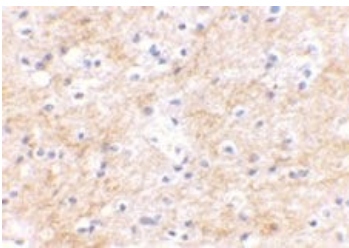
Lane 2 : Anti-Pan-SAPAP antibody (ab67224) at 2 µg/ml

All lanes : rat brain tissue lysate

Lysates/proteins at 15 µg per lane.

Predicted band size: 106 kDa

Observed band size: 106 kDa



Immunohistochemistry (Formalin/PFA-fixed paraffin-embedded sections) - Anti-Pan-SAPAP antibody (ab67224)

ab67224 at 2.5µg/ml staining of Pan-SAPAP in human brain tissue using IHC-P.

Please note: All products are "FOR RESEARCH USE ONLY. NOT FOR USE IN DIAGNOSTIC PROCEDURES"

Our Abpromise to you: Quality guaranteed and expert technical support

- Replacement or refund for products not performing as stated on the datasheet
- Valid for 12 months from date of delivery
- Response to your inquiry within 24 hours
- We provide support in Chinese, English, French, German, Japanese and Spanish
- Extensive multi-media technical resources to help you
- We investigate all quality concerns to ensure our products perform to the highest standards

If the product does not perform as described on this datasheet, we will offer a refund or replacement. For full details of the Abpromise, please visit <https://www.abcam.com/abpromise> or contact our technical team.

Terms and conditions

- Guarantee only valid for products bought direct from Abcam or one of our authorized distributors