




Product datasheet

# Anti-Pancreatic alpha amylase antibody ab231119

4 Images

Overview

<b>Product name</b>	Anti-Pancreatic alpha amylase antibody
<b>Description</b>	Rabbit polyclonal to Pancreatic alpha amylase
<b>Host species</b>	Rabbit
<b>Tested applications</b>	<b>Suitable for:</b> IHC-P, WB
<b>Species reactivity</b>	<b>Reacts with:</b> Rat <b>Predicted to work with:</b> Mouse, Human, Pig 
<b>Immunogen</b>	<p>Recombinant fragment (His-T7-tag) corresponding to Rat Pancreatic alpha amylase aa 201-473. Expressed in E. coli.</p> <p>Sequence:</p> <pre> IGVAGFRLDAAKHMWPGDIKAVLDKLNHNTKWFSQGSR PFIFQEVIDLG GEAIKGSEYFGNGRVTEFKYGAKLGTVIRKWNGEKMSYLK NWGEGWGFVP TDRALVFVDNHDNQRGHGAGGASILTFWDARMYKMAVG FMLAHPYGFTRV MSSYRWARNFQNGKDVNDWIGPPNNGVTKEVTINPDTT CGNDWVCEHRW RQIRNMVAFRNVVNGQPANWWDNGSNQVAFSRGNRGF MFNDDWALSS TLQTGLPAGTYCDVISGDKVNGN           </pre> <p>Database link: <a href="#">G3V844</a>  <a href="#">Run BLAST with</a>  <a href="#">Run BLAST with</a></p>
<b>Positive control</b>	IHC-P: Rat pancreas tissue. WB: Recombinant rat Pancreatic alpha amylase protein. Rat pancreas lysate and serum.
<b>General notes</b>	<p>Reproducibility is key to advancing scientific discovery and accelerating scientists' next breakthrough.</p> <p>Abcam is leading the way with our range of recombinant antibodies, knockout-validated antibodies and knockout cell lines, all of which support improved reproducibility.</p> <p>We are also planning to innovate the way in which we present recommended applications and species on our product datasheets, so that only applications &amp; species that have been tested in our own labs, our suppliers or by selected trusted collaborators are covered by our Abpromise™ guarantee.</p> <p>In preparation for this, we have started to update the applications &amp; species that this product is</p>

Abpromise guaranteed for.

We are also updating the applications & species that this product has been “predicted to work with,” however this information is not covered by our Abpromise guarantee.

Applications & species from publications and Abreviews that have not been tested in our own labs or in those of our suppliers are not covered by the Abpromise guarantee.

Please check that this product meets your needs before purchasing. If you have any questions, special requirements or concerns, please send us an inquiry and/or contact our Support team ahead of purchase. Recommended alternatives for this product can be found below, as well as customer reviews and Q&As.

## Properties

---

<b>Form</b>	Liquid
<b>Storage instructions</b>	Shipped at 4°C. Store at +4°C short term (1-2 weeks). Upon delivery aliquot. Store at -20°C long term. Avoid freeze / thaw cycle.
<b>Storage buffer</b>	pH: 7.40 Preservative: 0.02% Sodium azide Constituents: PBS, 50% Glycerol
<b>Purity</b>	Protein A purified
<b>Purification notes</b>	Antigen-specific affinity chromatography followed by Protein A affinity chromatography
<b>Clonality</b>	Polyclonal
<b>Isotype</b>	IgG

## Applications

---

Our [Abpromise guarantee](#) covers the use of **ab231119** in the following tested applications.

The application notes include recommended starting dilutions; optimal dilutions/concentrations should be determined by the end user.

Application	Abreviews	Notes
IHC-P		Use a concentration of 5 - 20 µg/ml.
WB		Use a concentration of 0.2 - 2 µg/ml.

---

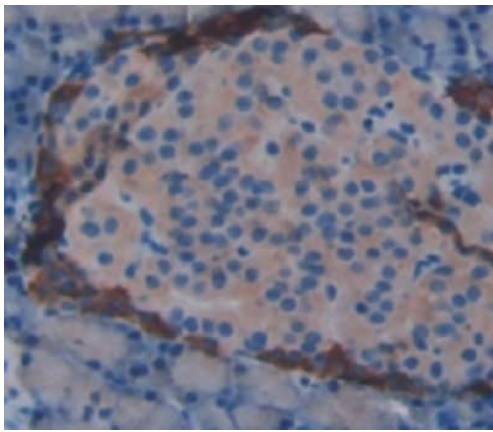
## Target

---

**Relevance** Pancreatic amylase is a digestive enzyme secreted by the pancreas. It consists of a single polypeptide chain with a molecular weight of 54 kDa. Pancreatic amylase occurs in serum at a concentration of about 60µg/L, from a total amylase concentration in serum of about 120µg/L. Pancreatic amylase and salivary amylase are the products of separate genes and, although they share 98% amino acid sequence homology, they differ in molecular size, isoelectric point and antigenic properties. Measurement of amylase concentrations in serum is a diagnostic test for various pancreatic disorders (especially acute and relapsing pancreatitis).

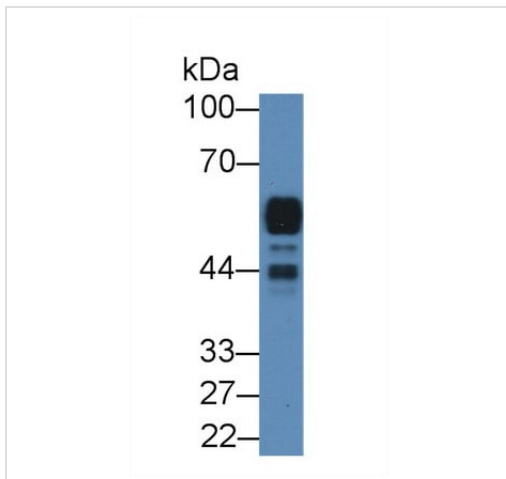
**Cellular localization** Secreted protein; extracellular space.

## Images



Immunohistochemistry (Formalin/PFA-fixed paraffin-embedded sections) - Anti-Pancreatic alpha amylase antibody (ab231119)

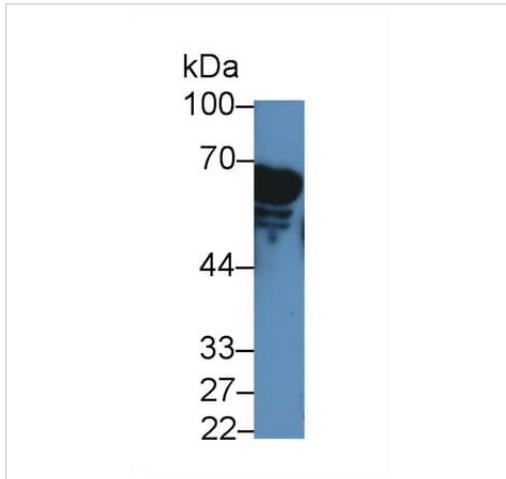
Formalin-fixed, paraffin-embedded rat pancreas tissue stained for Pancreatic alpha amylase with ab231119 at 20  $\mu\text{g/ml}$  in immunohistochemical analysis. DAB staining.



Western blot - Anti-Pancreatic alpha amylase antibody (ab231119)

Anti-Pancreatic alpha amylase antibody (ab231119) at 2  $\mu\text{g/ml}$  + Rat pancreas lysate

Developed using the ECL technique.

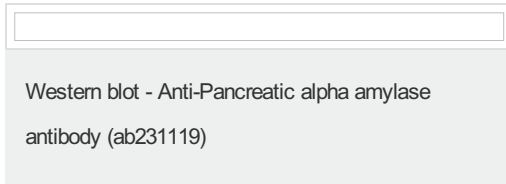


Western blot - Anti-Pancreatic alpha amylase antibody (ab231119)

Anti-Pancreatic alpha amylase antibody (ab231119) at 2 µg/ml +

Rat serum

Developed using the ECL technique.



Western blot - Anti-Pancreatic alpha amylase antibody (ab231119)

Anti-Pancreatic alpha amylase antibody (ab231119) at 2 µg/ml +

Recombinant rat Pancreatic alpha amylase protein

Developed using the ECL technique.

**Please note:** All products are "FOR RESEARCH USE ONLY. NOT FOR USE IN DIAGNOSTIC PROCEDURES"

### Our Abpromise to you: Quality guaranteed and expert technical support

- Replacement or refund for products not performing as stated on the datasheet
- Valid for 12 months from date of delivery
- Response to your inquiry within 24 hours
- We provide support in Chinese, English, French, German, Japanese and Spanish
- Extensive multi-media technical resources to help you
- We investigate all quality concerns to ensure our products perform to the highest standards

If the product does not perform as described on this datasheet, we will offer a refund or replacement. For full details of the Abpromise, please visit <https://www.abcam.com/abpromise> or contact our technical team.

### Terms and conditions

- Guarantee only valid for products bought direct from Abcam or one of our authorized distributors