



Product datasheet

# Anti-Pancreatic Lipase/PTL antibody ab238594

1 Image

Overview

<b>Product name</b>	Anti-Pancreatic Lipase/PTL antibody
<b>Description</b>	Rabbit polyclonal to Pancreatic Lipase/PTL
<b>Host species</b>	Rabbit
<b>Tested applications</b>	<b>Suitable for:</b> IHC-P
<b>Species reactivity</b>	<b>Reacts with:</b> Human
<b>Immunogen</b>	<p>Recombinant fragment corresponding to Human Pancreatic Lipase/PTL aa 60-214. Sequence:</p> <p>NENPNNFQEVAADSSSISGSNFKTRKTRFIIHGFIDKG EENWLANVCKN LFKVESVNCICVDWKGGSRGTQASQNIRVGAEVAY FVEFLQSAFGYS PSNVHVIGHSLGAHAAGEAGRRTNGTIGRITGLDPAEP CFQGTPELVRLD PSDAK</p> <p>Database link: <a href="#">P16233</a></p> <p style="text-align: right;"> <a href="#">Run BLAST with</a>       <a href="#">Run BLAST with</a></p>
<b>Positive control</b>	IHC-P: Human pancreas tissue.
<b>General notes</b>	Previously labelled as Pancreatic Lipase.

Properties

<b>Form</b>	Liquid
<b>Storage instructions</b>	Shipped at 4°C. Store at +4°C short term (1-2 weeks). Upon delivery aliquot. Store at -20°C long term. Avoid freeze / thaw cycle.
<b>Storage buffer</b>	<p>pH: 7.40 Preservative: 0.03% Proclin Constituents: PBS, 50% Glycerol</p>
<b>Purity</b>	Protein G purified
<b>Purification notes</b>	Purity >95%.
<b>Clonality</b>	Polyclonal
<b>Isotype</b>	IgG

## Applications

---

Our [Abpromise guarantee](#) covers the use of **ab238594** in the following tested applications.

The application notes include recommended starting dilutions; optimal dilutions/concentrations should be determined by the end user.

Application	Abreviews	Notes
IHC-P		1/200 - 1/500. Perform heat mediated antigen retrieval with citrate buffer pH 6 before commencing with IHC staining protocol.

---

## Target

---

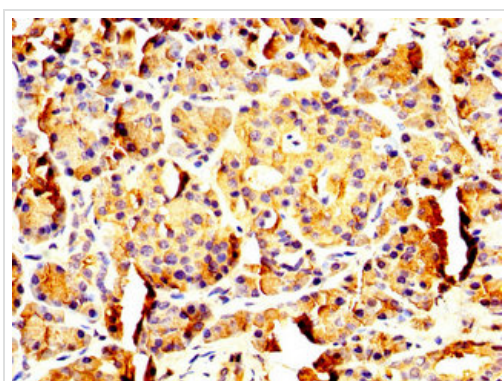
**Sequence similarities** Belongs to the AB hydrolase superfamily. Lipase family.  
Contains 1 PLAT domain.

**Cellular localization** Secreted.

---

## Images

---



Immunohistochemistry (Formalin/PFA-fixed paraffin-embedded sections) - Anti-Pancreatic Lipase/PTL antibody (ab238594)

Paraffin-embedded human pancreas tissue stained for Pancreatic Lipase/PTL using ab238594 at 1/200 dilution in immunohistochemical analysis.

After dewaxing and hydration, antigen retrieval was mediated by high pressure in a citrate buffer (pH 6.0). Section was blocked with 10% normal goat serum 30 minutes at RT. Then primary antibody (1% BSA) was incubated at 4°C overnight. The primary is detected by a biotinylated secondary antibody and visualized using an HRP conjugated SP system.

**Please note:** All products are "FOR RESEARCH USE ONLY. NOT FOR USE IN DIAGNOSTIC PROCEDURES"

## Our Abpromise to you: Quality guaranteed and expert technical support

---

- Replacement or refund for products not performing as stated on the datasheet
- Valid for 12 months from date of delivery
- Response to your inquiry within 24 hours
- We provide support in Chinese, English, French, German, Japanese and Spanish
- Extensive multi-media technical resources to help you
- We investigate all quality concerns to ensure our products perform to the highest standards

If the product does not perform as described on this datasheet, we will offer a refund or replacement. For full details of the Abpromise, please visit <https://www.abcam.com/abpromise> or contact our technical team.

### **Terms and conditions**

---

- Guarantee only valid for products bought direct from Abcam or one of our authorized distributors