

Product datasheet

Anti-Pancreatic Lipase/PTL antibody [EPR6276] ab124915

Recombinant RabMAb

[3 Images](#)

Overview

Product name	Anti-Pancreatic Lipase/PTL antibody [EPR6276]
Description	Rabbit monoclonal [EPR6276] to Pancreatic Lipase/PTL
Host species	Rabbit
Tested applications	Suitable for: WB, IHC-P Unsuitable for: IP
Species reactivity	Reacts with: Human Does not react with: Mouse, Rat
Immunogen	Synthetic peptide within Human Pancreatic Lipase/PTL aa 350-450. The exact sequence is proprietary.
Positive control	Human pancreas and Human small intestine lysates; Human pancreas tissue.
General notes	

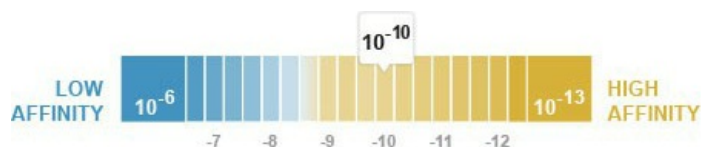
Previously labelled as Pancreatic Lipase.

Our RabMAb[®] technology is a patented hybridoma-based technology for making rabbit monoclonal antibodies. For details on our patents, please refer to [RabMAb[®] patents](#).

This product is a [recombinant rabbit monoclonal antibody](#).

Properties

Form	Liquid
Storage instructions	Shipped at 4°C. Store at -20°C. Stable for 12 months at -20°C.
Dissociation constant (K_D)	K _D = 1.40 x 10 ⁻¹⁰ M



[Learn more about K_D](#)

Storage buffer	pH: 7.20 Preservative: 0.05% Sodium azide Constituents: 40% Glycerol, 9.85% Tris glycine, 50% Tissue culture supernatant
Purity	Tissue culture supernatant
Clonality	Monoclonal
Clone number	EPR6276
Isotype	IgG

Applications

Our [Abpromise guarantee](#) covers the use of **ab124915** in the following tested applications.

The application notes include recommended starting dilutions; optimal dilutions/concentrations should be determined by the end user.

Application	Abreviews	Notes
WB		1/10000 - 1/50000. Detects a band of approximately 49 kDa (predicted molecular weight: 51 kDa).
IHC-P		1/500 - 1/1000. Perform heat mediated antigen retrieval with citrate buffer pH 6 before commencing with IHC staining protocol.

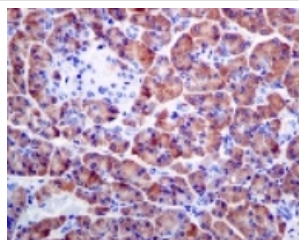
Application notes Is unsuitable for IP.

Target

Sequence similarities Belongs to the AB hydrolase superfamily. Lipase family.
Contains 1 PLAT domain.

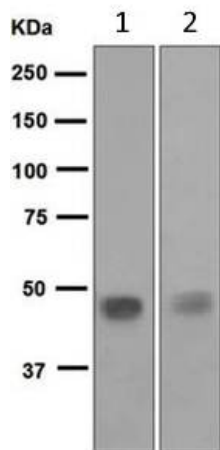
Cellular localization Secreted.

Images



ab124915, at 1/500 dilution, staining Pancreatic Lipase/PTL in paraffin embedded Human pancreas tissue by immunohistochemistry.

Immunohistochemistry (Formalin/PFA-fixed paraffin-embedded sections) - Anti-Pancreatic Lipase/PTL antibody [EPR6276] (ab124915)



Western blot - Anti-Pancreatic Lipase/PTL antibody [EPR6276] (ab124915)

All lanes : Anti-Pancreatic Lipase/PTL antibody [EPR6276] (ab124915) at 1/10000 dilution

Lane 1 : Human pancreas lysate

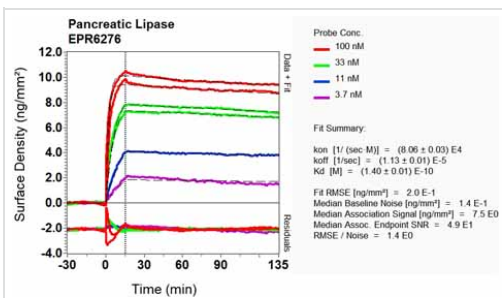
Lane 2 : Human small intestine lysate

Lysates/proteins at 10 µg per lane.

Secondary

All lanes : HRP labelled goat anti-rabbit at 1/2000 dilution

Predicted band size: 51 kDa



Other - Anti-Pancreatic Lipase/PTL antibody [EPR6276] (ab124915)

Equilibrium dissociation constant (K_D)

Learn more about K_D

[Click here to learn more about \$K_D\$](#)

Please note: All products are "FOR RESEARCH USE ONLY. NOT FOR USE IN DIAGNOSTIC PROCEDURES"

Our Abpromise to you: Quality guaranteed and expert technical support

- Replacement or refund for products not performing as stated on the datasheet
- Valid for 12 months from date of delivery
- Response to your inquiry within 24 hours
- We provide support in Chinese, English, French, German, Japanese and Spanish
- Extensive multi-media technical resources to help you
- We investigate all quality concerns to ensure our products perform to the highest standards

If the product does not perform as described on this datasheet, we will offer a refund or replacement. For full details of the Abpromise, please visit <https://www.abcam.com/abpromise> or contact our technical team.

Terms and conditions

- Guarantee only valid for products bought direct from Abcam or one of our authorized distributors