



Product datasheet

Anti-PANDER antibody ab224100

2 Images

Overview

Product name	Anti-PANDER antibody
Description	Rabbit polyclonal to PANDER
Host species	Rabbit
Tested applications	Suitable for: WB, IHC-P
Species reactivity	Reacts with: Human
Immunogen	<p>Recombinant fragment corresponding to Human PANDER aa 67-181. Sequence:</p> <p>TPCPSDTYAYRLLSGGGRSKYAKICFEDNLLMGEQLG NVARGINIAVNY VTGNVTATRCFDMYEGDNSGPMTKFIQSAAPKSLLFM VTYDDGSTRLNND AKNAIEALGSKEIRN</p> <p>Database link: P58499</p> <p style="text-align: right;">  Run BLAST with  Run BLAST with </p>
Positive control	WB: PANDER overexpressing HEK-293T cell lysate. IHC-P: Human small intestine tissue.
General notes	Previously labelled as FAM3B.

Properties

Form	Liquid
Storage instructions	Shipped at 4°C. Store at +4°C short term (1-2 weeks). Upon delivery aliquot. Store at -20°C long term. Avoid freeze / thaw cycle.
Storage buffer	<p>pH: 7.20 Preservative: 0.02% Sodium azide Constituents: 40% Glycerol, PBS</p>
Purity	Immunogen affinity purified
Clonality	Polyclonal
Isotype	IgG

Applications

Our [Abpromise guarantee](#) covers the use of **ab224100** in the following tested applications.

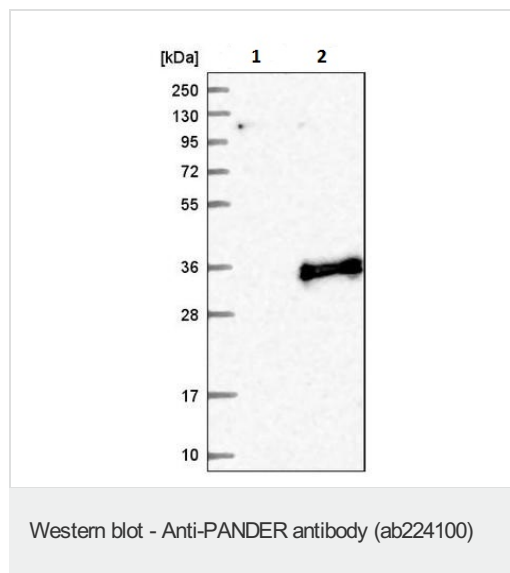
The application notes include recommended starting dilutions; optimal dilutions/concentrations should be determined by the end user.

Application	Abreviews	Notes
WB		1/100 - 1/250.
IHC-P		1/50 - 1/200. Perform heat mediated antigen retrieval with citrate buffer pH 6 before commencing with IHC staining protocol.

Target

Function	Induces apoptosis of alpha and beta cells in a dose- and time-dependent manner. Present in insulin secretory granules and likely cosecreted with insulin.
Tissue specificity	Highly expressed in the pancreas. Also found in the colon, kidney, prostate, small intestine and testis.
Sequence similarities	Belongs to the FAM3 family.
Post-translational modifications	2 N-termini have been observed in the mature protein: the first at Glu-30, resulting from signal peptide cleavage, the second at Ser-46.
Cellular localization	Secreted. Localized in discrete vesicular and perinuclear structure.

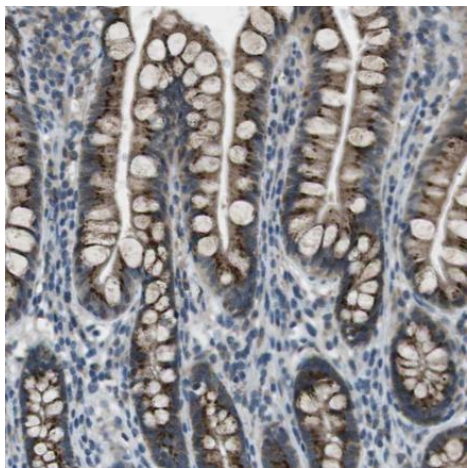
Images



All lanes : Anti-PANDER antibody (ab224100) at 1/100 dilution

Lane 1 : Vector only transfected HEK-293T (human epithelial cell line from embryonic kidney transformed with large T antigen) cell lysate

Lane 2 : PANDER overexpressing HEK-293T (human epithelial cell line from embryonic kidney transformed with large T antigen) cell lysate



Paraffin embedded human small intestine tissue stained for PANDER with ab224100 (1/50) in immunohistochemical analysis.

Immunohistochemistry (Formalin/PFA-fixed paraffin-embedded sections) - Anti-PANDER antibody (ab224100)

Please note: All products are "FOR RESEARCH USE ONLY. NOT FOR USE IN DIAGNOSTIC PROCEDURES"

Our Abpromise to you: Quality guaranteed and expert technical support

- Replacement or refund for products not performing as stated on the datasheet
- Valid for 12 months from date of delivery
- Response to your inquiry within 24 hours

- We provide support in Chinese, English, French, German, Japanese and Spanish
- Extensive multi-media technical resources to help you
- We investigate all quality concerns to ensure our products perform to the highest standards

If the product does not perform as described on this datasheet, we will offer a refund or replacement. For full details of the Abpromise, please visit <https://www.abcam.com/abpromise> or contact our technical team.

Terms and conditions

- Guarantee only valid for products bought direct from Abcam or one of our authorized distributors