


Product datasheet

Anti-Pantothenate kinase 4 antibody ab137243

2 Images

Overview

Product name	Anti-Pantothenate kinase 4 antibody
Description	Rabbit polyclonal to Pantothenate kinase 4
Host species	Rabbit
Tested applications	Suitable for: WB, IP
Species reactivity	Reacts with: Human Predicted to work with: Chimpanzee 
Immunogen	Synthetic peptide corresponding to Human Pantothenate kinase 4 aa 50-100. Database link: NP_060686.1
Positive control	293T, HeLa and Jurkat whole cell lysates
General notes	Previously labelled as PANK4. The Life Science industry has been in the grips of a reproducibility crisis for a number of years. Abcam is leading the way in addressing this with our range of recombinant monoclonal antibodies and knockout edited cell lines for gold-standard validation. Please check that this product meets your needs before purchasing. If you have any questions, special requirements or concerns, please send us an inquiry and/or contact our Support team ahead of purchase. Recommended alternatives for this product can be found below, along with publications, customer reviews and Q&As

Properties

Form	Liquid
Storage instructions	Shipped at 4°C. Store at +4°C.
Storage buffer	pH: 7 Preservative: 0.09% Sodium azide Constituent: 99% Tris citrate/phosphate pH 7 to 8
Purity	Immunogen affinity purified
Purification notes	ab137243 was affinity purified using an epitope specific to Pantothenate kinase 4 immobilized on solid support.

Clonality Polyclonal
Isotype IgG

Applications

The Abpromise guarantee Our [Abpromise guarantee](#) covers the use of ab137243 in the following tested applications. The application notes include recommended starting dilutions; optimal dilutions/concentrations should be determined by the end user.

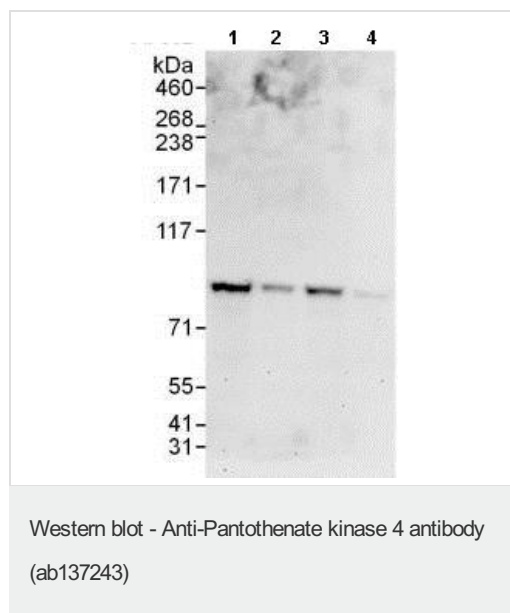
Application	Abreviews	Notes
WB		1/2000 - 1/10000. Predicted molecular weight: 86 kDa.
IP		Use at 2-10 µg/mg of lysate.

Target

Relevance Pantothenate kinase 4 belongs to the pantothenate kinase family. Pantothenate kinase is a key regulatory enzyme in the physiological regulation of the intracellular coenzyme A (CoA) concentration. It catalyzes the first committed step in the universal biosynthetic pathway leading to CoA and is itself subject to regulation through feedback inhibition by CoA. This family member is most abundant in muscle but is expressed in all tissues.

Cellular localization Cytoplasmic

Images



All lanes : Anti-Pantothenate kinase 4 antibody (ab137243) at 0.1 µg/ml

Lane 1 : 293T whole cell lysate at 50 µg

Lane 2 : 293T whole cell lysate at 15 µg

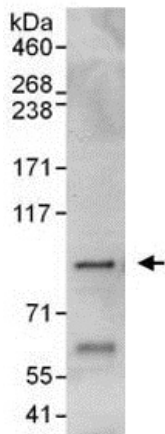
Lane 3 : HeLa whole cell lysate at 50 µg

Lane 4 : Jurkat whole cell lysate at 50 µg

Developed using the ECL technique.

Predicted band size: 86 kDa

Exposure time: 30 seconds



Immunoprecipitation - Anti-Pantothenate kinase 4 antibody (ab137243)

Detection of Pantothenate kinase 4 by Western blot of immunoprecipitate

ab137243, at 6 µg/ml, immunoprecipitating Pantothenate kinase 4 from HeLa whole cell lysate (1 mg for IP, 20% of IP loaded).

1 µg/ml of ab137243 was used for the subsequent Western blot.

Detection: Chemiluminescence with an exposure time of 10 seconds.

Please note: All products are "FOR RESEARCH USE ONLY. NOT FOR USE IN DIAGNOSTIC PROCEDURES"

Our Abpromise to you: Quality guaranteed and expert technical support

- Replacement or refund for products not performing as stated on the datasheet
- Valid for 12 months from date of delivery
- Response to your inquiry within 24 hours
- We provide support in Chinese, English, French, German, Japanese and Spanish
- Extensive multi-media technical resources to help you
- We investigate all quality concerns to ensure our products perform to the highest standards

If the product does not perform as described on this datasheet, we will offer a refund or replacement. For full details of the Abpromise, please visit <https://www.abcam.com/abpromise> or contact our technical team.

Terms and conditions

- Guarantee only valid for products bought direct from Abcam or one of our authorized distributors