

Product datasheet

Anti-PAR2 antibody ab124227

2 References 2 Images

Overview

Product name	Anti-PAR2 antibody
Description	Rabbit polyclonal to PAR2
Host species	Rabbit
Tested applications	Suitable for: IHC-P
Species reactivity	Reacts with: Rat
Immunogen	Synthetic peptide within Human PAR2 aa 300-370 conjugated to keyhole limpet haemocyanin. The exact sequence is proprietary. The immunogen is directed against a cytoplasmic region of PAR2.

General notes

The Life Science industry has been in the grips of a reproducibility crisis for a number of years. Abcam is leading the way in addressing this with our range of recombinant monoclonal antibodies and knockout edited cell lines for gold-standard validation. Please check that this product meets your needs before purchasing.

If you have any questions, special requirements or concerns, please send us an inquiry and/or contact our Support team ahead of purchase. Recommended alternatives for this product can be found below, along with publications, customer reviews and Q&As

Properties

Form	Liquid
Storage instructions	Shipped at 4°C. Upon delivery aliquot and store at -20°C. Avoid freeze / thaw cycles.
Storage buffer	Contains antibody stabilization buffer.
Purity	Immunogen affinity purified
Purification notes	ab123227 is purified on an antigen-based affinity column.
Clonality	Polyclonal
Isotype	IgG

Applications

The Abpromise guarantee Our [Abpromise guarantee](#) covers the use of ab124227 in the following tested applications. The application notes include recommended starting dilutions; optimal dilutions/concentrations should be determined by the end user.

Application	Abreviews	Notes
IHC-P		1/100.

Target

Function

Receptor for trypsin and trypsin-like enzymes coupled to G proteins that stimulate phosphoinositide hydrolysis. May have a role in the regulation of vascular tone.

Tissue specificity

Widely expressed in tissues with especially high levels in pancreas, liver, kidney, small intestine, and colon. Moderate expression is detected in many organs, but none in brain or skeletal muscle.

Sequence similarities

Belongs to the G-protein coupled receptor 1 family.

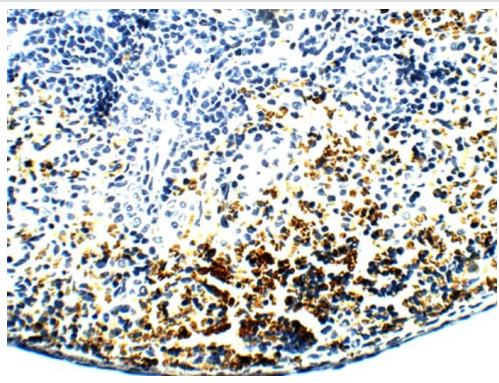
Post-translational modifications

A proteolytic cleavage generates a new N-terminus that functions as a tethered ligand.

Cellular localization

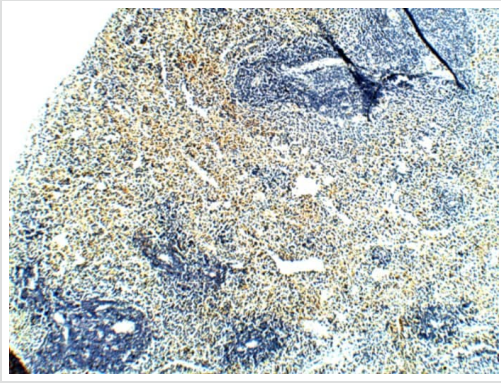
Cell membrane.

Images



Immunohistochemistry (Formalin/PFA-fixed paraffin-embedded sections) analysis of rat spleen tissue labelling PAR2 with ab124227 at 1/100 dilution. Counterstained with hematoxylin. 40X magnification.

Immunohistochemistry (Formalin/PFA-fixed paraffin-embedded sections) - Anti-PAR2 antibody (ab124227)



Immunohistochemistry (Formalin/PFA-fixed paraffin-embedded sections) analysis of rat spleen tissue labelling PAR2 with ab124227 at 1/100 dilution. Counterstained with hematoxylin. 5X magnification.

Immunohistochemistry (Formalin/PFA-fixed paraffin-embedded sections) - Anti-PAR2 antibody (ab124227)

Please note: All products are "FOR RESEARCH USE ONLY. NOT FOR USE IN DIAGNOSTIC PROCEDURES"

Our Abpromise to you: Quality guaranteed and expert technical support

- Replacement or refund for products not performing as stated on the datasheet
- Valid for 12 months from date of delivery
- Response to your inquiry within 24 hours

- We provide support in Chinese, English, French, German, Japanese and Spanish
- Extensive multi-media technical resources to help you
- We investigate all quality concerns to ensure our products perform to the highest standards

If the product does not perform as described on this datasheet, we will offer a refund or replacement. For full details of the Abpromise, please visit <https://www.abcam.com/abpromise> or contact our technical team.

Terms and conditions

- Guarantee only valid for products bought direct from Abcam or one of our authorized distributors