

## Product datasheet

# Anti-PARP4 antibody [P193-10] ab24110

2 References 1 Image

### Overview

---

<b>Product name</b>	Anti-PARP4 antibody [P193-10]
<b>Description</b>	Mouse monoclonal [P193-10] to PARP4
<b>Host species</b>	Mouse
<b>Tested applications</b>	<b>Suitable for:</b> IHC-P, IHC-FoFr
<b>Species reactivity</b>	<b>Reacts with:</b> Human
<b>Immunogen</b>	Synthetic peptide, corresponding to amino acids 408-611 of Human PARP4.
<b>Positive control</b>	IHC-P: FFPE human kidney tissue sections.
<b>General notes</b>	<p>The Life Science industry has been in the grips of a reproducibility crisis for a number of years. Abcam is leading the way in addressing this with our range of recombinant monoclonal antibodies and knockout edited cell lines for gold-standard validation. Please check that this product meets your needs before purchasing.</p> <p>If you have any questions, special requirements or concerns, please send us an inquiry and/or contact our Support team ahead of purchase. Recommended alternatives for this product can be found below, along with publications, customer reviews and Q&amp;As</p>

### Properties

---

<b>Form</b>	Liquid
<b>Storage instructions</b>	Shipped at 4°C. Store at +4°C short term (1-2 weeks). Upon delivery aliquot. Store at -20°C long term.
<b>Storage buffer</b>	pH: 7.3 Preservative: 0.1% Sodium azide Constituent: 1% BSA
<b>Clonality</b>	Monoclonal
<b>Clone number</b>	P193-10
<b>Isotype</b>	IgG2b
<b>Light chain type</b>	kappa

### Applications

---

## The Abpromise guarantee

Our [Abpromise guarantee](#) covers the use of ab24110 in the following tested applications.

The application notes include recommended starting dilutions; optimal dilutions/concentrations should be determined by the end user.

Application	Abreviews	Notes
IHC-P		
IHC-FoFr		

## Application notes

Flow Cyt: Use at an assay dependent dilution.

IHC-F: 1/10 - 1/20.

IHC-Fr: 1/10 - 1/20.

IHC-P: Use at an assay dependent dilution.

WB: Use at an assay dependent dilution. preferably with ECL

Predicted molecular weight: 193 kDa.

Not tested in other applications.

Optimal dilutions/concentrations should be determined by the end user.

## Target

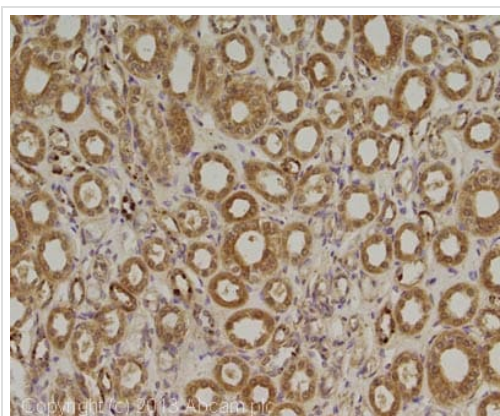
### Relevance

Component of the vault ribonucleoprotein particle which is at least composed of MVP, PARP4 and one or more vault RNAs (vRNAs). Binds to MVP. Associates with TEP1. Widely expressed; the highest levels are in the kidney; also detected in heart, placenta, lung, liver, skeletal muscle, spleen, leukocytes and pancreas.

### Cellular localization

Cytoplasmic, but is also found in the nucleus, associated with mitotic spindles.

## Images



Immunohistochemistry (Formalin/PFA-fixed paraffin-embedded sections) - Anti-PARP4 antibody [P193-10] (ab24110)

IHC image of PARP4 staining in human kidney formalin fixed paraffin embedded tissue section, performed on a Leica Bond system using the standard protocol F. The section was pre-treated using heat mediated antigen retrieval with sodium citrate buffer (pH6, epitope retrieval solution 1) for 20 mins. The section was then incubated with ab24110, 10µg/ml, for 15 mins at room temperature and detected using an HRP conjugated compact polymer system. DAB was used as the chromogen. The section was then counterstained with haematoxylin and mounted with DPX.

For other IHC staining systems (automated and non-automated) customers should optimize variable parameters such as antigen retrieval conditions, primary antibody concentration and antibody incubation times.

**Please note:** All products are "FOR RESEARCH USE ONLY. NOT FOR USE IN DIAGNOSTIC PROCEDURES"

## **Our Abpromise to you: Quality guaranteed and expert technical support**

---

- Replacement or refund for products not performing as stated on the datasheet
- Valid for 12 months from date of delivery
- Response to your inquiry within 24 hours
  
- We provide support in Chinese, English, French, German, Japanese and Spanish
- Extensive multi-media technical resources to help you
- We investigate all quality concerns to ensure our products perform to the highest standards

If the product does not perform as described on this datasheet, we will offer a refund or replacement. For full details of the Abpromise, please visit <https://www.abcam.com/abpromise> or contact our technical team.

## **Terms and conditions**

---

- Guarantee only valid for products bought direct from Abcam or one of our authorized distributors