




Product datasheet

Anti-PARVA antibody ab237683

2 Images

Overview

<b>Product name</b>	Anti-PARVA antibody
<b>Description</b>	Rabbit polyclonal to PARVA
<b>Host species</b>	Rabbit
<b>Tested applications</b>	<b>Suitable for:</b> ICC/IF, IHC-P
<b>Species reactivity</b>	<b>Reacts with:</b> Human <b>Predicted to work with:</b> Mouse, Rat 
<b>Immunogen</b>	Recombinant fragment corresponding to Human PARVA aa 2-94. Sequence: ATSPQKSPSVPKSPTPKSPPSRKKDDSFGLKLGGLA RRKKAKEVSELQE EGMNAINLPLSPIPFELDPEDTMLEENEVRTMVDPNR SDPKL  Database link: <a href="#">Q9NVD7</a>  <a href="#">Run BLAST with</a>  <a href="#">Run BLAST with</a>
<b>Positive control</b>	IHC-P: Human pancreas tissue. ICC/IF: A549 cells.
<b>General notes</b>	This product was previously labelled as Parvin alpha

Properties

<b>Form</b>	Liquid
<b>Storage instructions</b>	Shipped at 4°C. Store at +4°C short term (1-2 weeks). Upon delivery aliquot. Store at -20°C long term. Avoid freeze / thaw cycle.
<b>Storage buffer</b>	pH: 7.40 Preservative: 0.03% Proclin Constituents: 50% Glycerol, PBS
<b>Purity</b>	Protein G purified
<b>Purification notes</b>	Purity greater than 95%.
<b>Clonality</b>	Polyclonal

Isotype

IgG

## Applications

Our [Abpromise guarantee](#) covers the use of **ab237683** in the following tested applications.

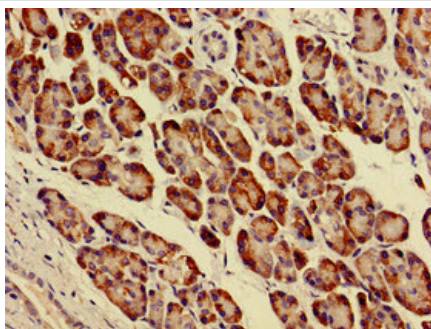
The application notes include recommended starting dilutions; optimal dilutions/concentrations should be determined by the end user.

Application	Abreviews	Notes
ICC/IF		1/50 - 1/200.
IHC-P		1/20 - 1/200.

## Target

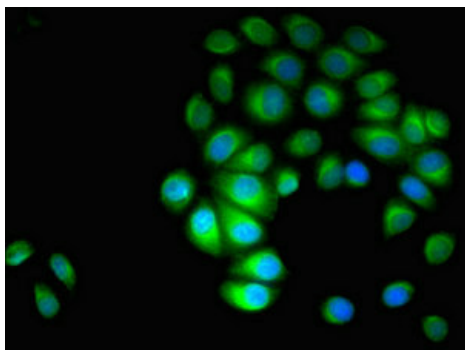
<b>Function</b>	Probably plays a role in the regulation of cell adhesion and cytoskeleton organization. Plays a role in ciliogenesis.
<b>Tissue specificity</b>	Widely expressed, with highest levels in heart, skeletal muscle, kidney and liver.
<b>Sequence similarities</b>	Belongs to the parvin family. Contains 2 CH (calponin-homology) domains.
<b>Cellular localization</b>	Cell junction > focal adhesion. Cell membrane. Cytoplasm > cytoskeleton. Constituent of focal adhesions.

## Images



Paraffin-embedded human pancreas tissue stained for PARVA using ab237683 at 1/100 dilution in immunohistochemical analysis.

Immunohistochemistry (Formalin/PFA-fixed paraffin-embedded sections) - Anti-PARVA antibody (ab237683)



Immunocytochemistry/ Immunofluorescence - Anti-PARVA antibody (ab237683)

A549 (human lung carcinoma cell line) cells stained for PARVA (green) using ab237683 at 1/100 dilution in ICC/IF. Secondary antibody is Alexa Fluor® 488-conjugated Goat Anti-Rabbit IgG (H+L).

**Please note:** All products are "FOR RESEARCH USE ONLY. NOT FOR USE IN DIAGNOSTIC PROCEDURES"

### Our Abpromise to you: Quality guaranteed and expert technical support

---

- Replacement or refund for products not performing as stated on the datasheet
- Valid for 12 months from date of delivery
- Response to your inquiry within 24 hours
- We provide support in Chinese, English, French, German, Japanese and Spanish
- Extensive multi-media technical resources to help you
- We investigate all quality concerns to ensure our products perform to the highest standards

If the product does not perform as described on this datasheet, we will offer a refund or replacement. For full details of the Abpromise, please visit <https://www.abcam.com/abpromise> or contact our technical team.

### Terms and conditions

---

- Guarantee only valid for products bought direct from Abcam or one of our authorized distributors