

## Product datasheet

# Anti-Paxillin antibody [M107] ab23510

**KO** VALIDATED

[1 References](#) [2 Images](#)

### Overview

---

<b>Product name</b>	Anti-Paxillin antibody [M107]
<b>Description</b>	Mouse monoclonal [M107] to Paxillin
<b>Host species</b>	Mouse
<b>Tested applications</b>	<b>Suitable for:</b> WB
<b>Species reactivity</b>	<b>Reacts with:</b> Human
<b>Immunogen</b>	Recombinant full length protein (Human).
<b>Positive control</b>	A431 cell lysate.
<b>General notes</b>	<p>The Life Science industry has been in the grips of a reproducibility crisis for a number of years. Abcam is leading the way in addressing this with our range of recombinant monoclonal antibodies and knockout edited cell lines for gold-standard validation. Please check that this product meets your needs before purchasing.</p> <p>If you have any questions, special requirements or concerns, please send us an inquiry and/or contact our Support team ahead of purchase. Recommended alternatives for this product can be found below, along with publications, customer reviews and Q&amp;As</p>

### Properties

---

<b>Form</b>	Liquid
<b>Storage instructions</b>	Shipped at 4°C. Store at -20°C. Stable for 12 months at -20°C.
<b>Storage buffer</b>	Preservative: 0.05% Sodium azide Constituents: PBS, 50% Glycerol, 0.1% BSA
<b>Purity</b>	Protein A purified
<b>Clonality</b>	Monoclonal
<b>Clone number</b>	M107
<b>Isotype</b>	IgG1

### Applications

---

## The Abpromise guarantee

Our [Abpromise guarantee](#) covers the use of ab23510 in the following tested applications.

The application notes include recommended starting dilutions; optimal dilutions/concentrations should be determined by the end user.

Application	Abreviews	Notes
WB		1/1000. Detects a band of approximately 68 kDa (predicted molecular weight: 65 kDa).

## Target

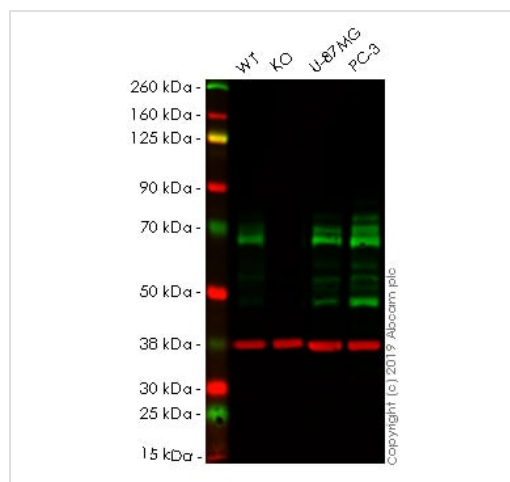
**Function** Cytoskeletal protein involved in actin-membrane attachment at sites of cell adhesion to the extracellular matrix (focal adhesion).

**Sequence similarities** Belongs to the paxillin family.  
Contains 4 LIM zinc-binding domains.

**Post-translational modifications** Phosphorylated on tyrosine residues during integrin-mediated cell adhesion, embryonic development, fibroblast transformation and following stimulation of cells by mitogens.

**Cellular localization** Cytoplasm > cytoskeleton. Cell junction > focal adhesion.

## Images



Western blot - Anti-Paxillin antibody [M107] (ab23510)

**All lanes :** Anti-Paxillin antibody [M107] (ab23510) at 1/1000 dilution

**Lane 1 :** Wild-type A431 whole cell lysate

**Lane 2 :** PXN knockout A431 whole cell lysate

**Lane 3 :** U-87 MG whole cell lysate

**Lane 4 :** PC-3 whole cell lysate

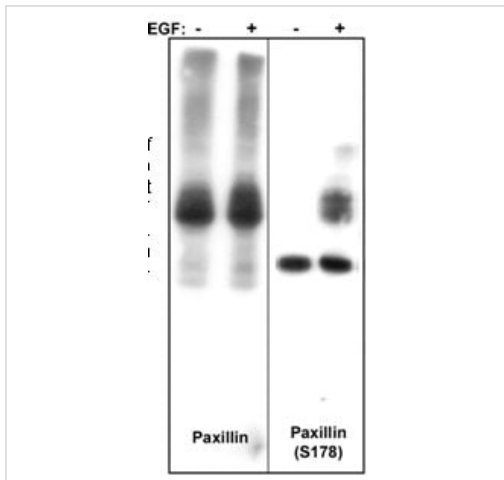
Lysates/proteins at 20 µg per lane.

**Predicted band size:** 65 kDa

**Lanes 1 -4:** Merged signal (red and green). Green - ab23510 observed at 65 kDa. Red - loading control, [ab181602](#), observed at 37 kDa.

ab23510 was shown to recognize PXN in wild-type A431 cells as signal was lost at the expected MW in PXN knockout cells. Additional cross-reactive bands were observed in the wild-type and knockout cells. Wild-type and PXN knockout samples were subjected to SDS-PAGE. Ab23510 and [ab181602](#) (Rabbit anti-GAPDH loading control) were incubated overnight at 4°C at 1/1000

dilution and 1/20000 dilution respectively. Blots were developed with Goat anti-Mouse IgG H&L (IRDye® 800CW) preabsorbed [ab216772](#) and Goat anti-Rabbit IgG H&L (IRDye® 680RD) preabsorbed [ab216777](#) secondary antibodies at 1/20000 dilution for 1 hour at room temperature before imaging.



Western blot - Anti-Paxillin antibody [M107] (ab23510)

**Lanes 1-2 :** Anti-Paxillin antibody [M107] (ab23510)

**Lanes 3-4 :** Anti-Paxillin (Ser178) antibody

**Lanes 1 & 3 :** A431 cells (20 ug/lane) serum starved overnight

**Lanes 2 & 4 :** A431 cells (20 ug/lane) serum treated with EGF (100 ng/ml) for 5 min.

**Predicted band size:** 65 kDa

Membrane was incubated with diluted antibody in 5% non-fat milk, PBS, 0.04% Tween20 for 1 hour at room temperature.

**Please note:** All products are "FOR RESEARCH USE ONLY. NOT FOR USE IN DIAGNOSTIC PROCEDURES"

### Our Abpromise to you: Quality guaranteed and expert technical support

- Replacement or refund for products not performing as stated on the datasheet
- Valid for 12 months from date of delivery
- Response to your inquiry within 24 hours
- We provide support in Chinese, English, French, German, Japanese and Spanish
- Extensive multi-media technical resources to help you
- We investigate all quality concerns to ensure our products perform to the highest standards

If the product does not perform as described on this datasheet, we will offer a refund or replacement. For full details of the Abpromise, please visit <https://www.abcam.com/abpromise> or contact our technical team.

### Terms and conditions

- Guarantee only valid for products bought direct from Abcam or one of our authorized distributors