

## Product datasheet

# Anti-Paxillin (phospho Y181) antibody [EP41(2)Y] ab76235

RabMAb<sup>®</sup>

[2 References](#) [1 Image](#)

### Overview

<b>Product name</b>	Anti-Paxillin (phospho Y181) antibody [EP41(2)Y]
<b>Description</b>	Rabbit monoclonal [EP41(2)Y] to Paxillin (phospho Y181)
<b>Host species</b>	Rabbit
<b>Specificity</b>	ab76235 only detects Paxillin phosphorylated on Tyrosine 181.
<b>Tested applications</b>	<b>Suitable for:</b> WB, IP, Flow Cyt
<b>Species reactivity</b>	<b>Reacts with:</b> Human
<b>Immunogen</b>	Synthetic phosphopeptide corresponding to residues surrounding Tyrosine 181 of Human Paxillin.
<b>Positive control</b>	HeLa cell lysate treated with pervanadate.
<b>General notes</b>	<p>Mouse: We have preliminary internal testing data to indicate this antibody may not react with these species. Please contact us for more information.</p> <p>Our RabMAb<sup>®</sup> technology is a patented hybridoma-based technology for making rabbit monoclonal antibodies. For details on our patents, please refer to <a href="#">RabMAb<sup>®</sup> patents</a>.</p>

### Properties

<b>Form</b>	Liquid
<b>Storage instructions</b>	Shipped at 4°C. Store at -20°C. Stable for 12 months at -20°C.
<b>Storage buffer</b>	<p>pH: 7.20</p> <p>Preservative: 0.05% Sodium azide</p> <p>Constituents: 0.1% BSA, 40% Glycerol (glycerin, glycerine), 9.85% Tris glycine, 50% Tissue culture supernatant</p>
<b>Purity</b>	Tissue culture supernatant
<b>Clonality</b>	Monoclonal
<b>Clone number</b>	EP41(2)Y
<b>Isotype</b>	IgG

### Applications

## Applications

Our [Abpromise guarantee](#) covers the use of **ab76235** in the following tested applications.

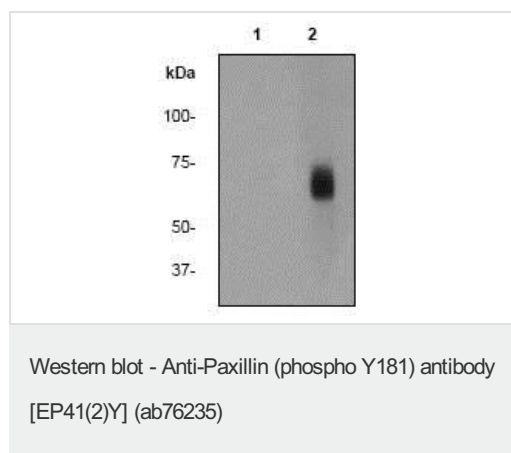
The application notes include recommended starting dilutions; optimal dilutions/concentrations should be determined by the end user.

Application	Abreviews	Notes
WB		1/1000 - 1/10000. Detects a band of approximately 68 kDa (predicted molecular weight: 64 kDa).
IP		1/10 - 1/100.
Flow Cyt		1/10 - 1/100. <a href="#">ab172730</a> - Rabbit monoclonal IgG, is suitable for use as an isotype control with this antibody.

## Target

<b>Function</b>	Cytoskeletal protein involved in actin-membrane attachment at sites of cell adhesion to the extracellular matrix (focal adhesion).
<b>Sequence similarities</b>	Belongs to the paxillin family. Contains 4 LIM zinc-binding domains.
<b>Post-translational modifications</b>	Phosphorylated on tyrosine residues during integrin-mediated cell adhesion, embryonic development, fibroblast transformation and following stimulation of cells by mitogens.
<b>Cellular localization</b>	Cytoplasm > cytoskeleton. Cell junction > focal adhesion.

## Images



**All lanes :** Anti-Paxillin (phospho Y181) antibody [EP41(2)Y] (ab76235) at 1/10000 dilution

**Lane 1 :** HeLa cell lysate

**Lane 2 :** HeLa cell lysate treated with pervanadate

Lysates/proteins at 10 µg per lane.

### Secondary

**All lanes :** HRP labelled goat anti-rabbit at 1/2000 dilution

**Predicted band size:** 64 kDa

**Observed band size:** 68 kDa

[why is the actual band size different from the predicted?](#)

**Please note:** All products are "FOR RESEARCH USE ONLY. NOT FOR USE IN DIAGNOSTIC PROCEDURES"

## **Our Abpromise to you: Quality guaranteed and expert technical support**

---

- Replacement or refund for products not performing as stated on the datasheet
- Valid for 12 months from date of delivery
- Response to your inquiry within 24 hours
  
- We provide support in Chinese, English, French, German, Japanese and Spanish
- Extensive multi-media technical resources to help you
- We investigate all quality concerns to ensure our products perform to the highest standards

If the product does not perform as described on this datasheet, we will offer a refund or replacement. For full details of the Abpromise, please visit <https://www.abcam.com/abpromise> or contact our technical team.

## **Terms and conditions**

---

- Guarantee only valid for products bought direct from Abcam or one of our authorized distributors