


Product datasheet

Anti-PBK/SPK antibody - C-terminal ab191146

1 Image

Overview

Product name	Anti-PBK/SPK antibody - C-terminal
Description	Rabbit polyclonal to PBK/SPK - C-terminal
Host species	Rabbit
Tested applications	Suitable for: WB
Species reactivity	Reacts with: Rat, Human Predicted to work with: Mouse 
Immunogen	Synthetic peptide corresponding to Human PBK/SPK aa 306-322 (C terminal). Sequence: KDRPSAAHIVEALETDV Database link: Q96KB5 Run BLAST with Run BLAST with
Positive control	Rat testis tissue lysate; HeLa, MCF7, SKOV, HepG2 and COLO320 whole cell lysates.
General notes	This product was previously labelled as PBK

Properties

Form	Liquid
Storage instructions	Shipped at 4°C. Store at +4°C short term (1-2 weeks). Upon delivery aliquot. Store at -20°C long term. Avoid freeze / thaw cycle.
Storage buffer	Preservatives: 0.025% Thimerosal (merthiolate), 0.025% Sodium azide Constituents: 2.5% BSA, 0.45% Sodium chloride, 0.1% Dibasic monohydrogen sodium phosphate
Purity	Immunogen affinity purified
Clonality	Polyclonal
Isotype	IgG

Applications

Our [Abpromise guarantee](#) covers the use of **ab191146** in the following tested applications.

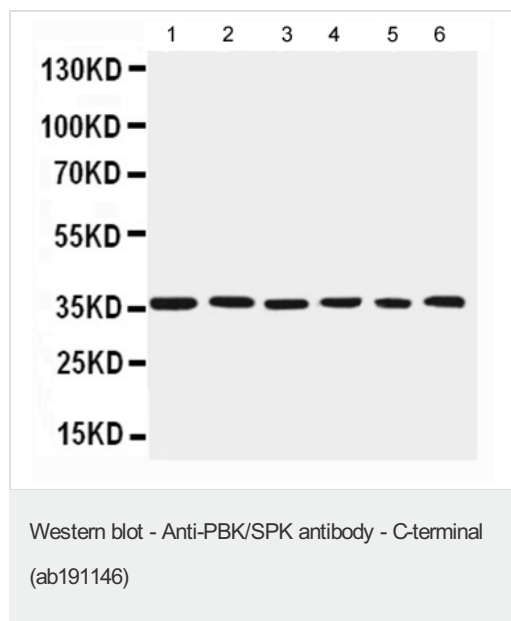
The application notes include recommended starting dilutions; optimal dilutions/concentrations should be determined by the end user.

Application	Abreviews	Notes
WB		Use a concentration of 0.1 - 0.5 µg/ml. Predicted molecular weight: 36 kDa.

Target

Function	Phosphorylates MAP kinase p38. Seems to be active only in mitosis. May also play a role in the activation of lymphoid cells. When phosphorylated, forms a complex with TP53, leading to TP53 destabilization and attenuation of G2/M checkpoint during doxorubicin-induced DNA damage.
Tissue specificity	Expressed in the testis and placenta. In the testis, restrictedly expressed in outer cell layer of seminiferous tubules.
Sequence similarities	Belongs to the protein kinase superfamily. Ser/Thr protein kinase family. MAP kinase kinase subfamily. Contains 1 protein kinase domain.
Post-translational modifications	Phosphorylated; in a cell-cycle dependent manner at mitosis.

Images



All lanes : Anti-PBK/SPK antibody - C-terminal (ab191146) at 0.5 µg/ml

Lane 1 : Rat testis tissue lysate

Lane 2 : HeLa cell lysate

Lane 3 : MCF7 cell lysate

Lane 4 : SKOV cell lysate

Lane 5 : HepG2 cell lysate

Lane 6 : COLO320 cell lysate

Lysates/proteins at 40 µg per lane.

Predicted band size: 36 kDa

Please note: All products are "FOR RESEARCH USE ONLY. NOT FOR USE IN DIAGNOSTIC PROCEDURES"

Our Abpromise to you: Quality guaranteed and expert technical support

- Replacement or refund for products not performing as stated on the datasheet
- Valid for 12 months from date of delivery

- Response to your inquiry within 24 hours
- We provide support in Chinese, English, French, German, Japanese and Spanish
- Extensive multi-media technical resources to help you
- We investigate all quality concerns to ensure our products perform to the highest standards

If the product does not perform as described on this datasheet, we will offer a refund or replacement. For full details of the Abpromise, please visit <https://www.abcam.com/abpromise> or contact our technical team.

Terms and conditions

- Guarantee only valid for products bought direct from Abcam or one of our authorized distributors