

Product datasheet

Anti-PBR antibody ab2305

1 Image

Overview

Product name	Anti-PBR antibody
Description	Rabbit polyclonal to PBR
Host species	Rabbit
Tested applications	Suitable for: IHC, WB
Species reactivity	Reacts with: Rat, Human
Immunogen	Synthetic peptide corresponding to Mouse PBR. BAA04749, surrounding amino acid 81 Database link: P50637
Positive control	WB: Jurkat cell lysate. Recombinant PBR. Rat kidney tissue lysate.
General notes	This product is manufactured by BioVision, an Abcam company and was previously called 3044 PBR Antibody. 3044-100 is the same size as the 100 µg size of ab2305.

Properties

Form	Liquid
Storage instructions	Shipped at 4°C. Store at +4°C short term (1-2 weeks). Upon delivery aliquot. Store at -20°C. Avoid freeze / thaw cycle.
Storage buffer	pH: 7.20 Preservative: 0.01% Thimerosal (merthiolate) Constituents: 30% Glycerol (glycerin, glycerine), 0.5% BSA, 69% PBS
Purity	Affinity purified
Clonality	Polyclonal
Isotype	IgG

Applications

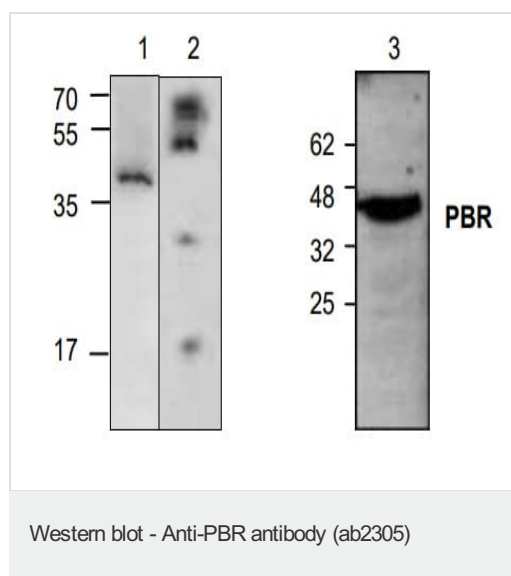
The Abpromise guarantee Our [Abpromise guarantee](#) covers the use of ab2305 in the following tested applications. The application notes include recommended starting dilutions; optimal dilutions/concentrations should be determined by the end user.

Application	Abreviews	Notes
IHC		Use a concentration of 2.5 µg/ml.
WB		Use a concentration of 0.5 - 4 µg/ml.

Target

Function	Responsible for the manifestation of peripheral-type benzodiazepine recognition sites and is most likely to comprise binding domains for benzodiazepines and isoquinoline carboxamides. May play a role in the transport of porphyrins and heme. Plays a role in the transport of cholesterol across mitochondrial membranes in steroidogenic cells.
Tissue specificity	Found in many tissue types. Expressed at the highest levels under normal conditions in tissues that synthesize steroids.
Sequence similarities	Belongs to the TspO/BZRP family.
Cellular localization	Mitochondrion membrane.

Images



All lanes : Anti-PBR antibody (ab2305) at 4 µg/ml

Lane 1 : Jurkat (Human T cell leukemia cell line from peripheral blood) cell lysate

Lane 2 : Recombinant PBR

Lane 3 : Rat kidney tissue lysate

Please note: All products are "FOR RESEARCH USE ONLY. NOT FOR USE IN DIAGNOSTIC PROCEDURES"

Our Abpromise to you: Quality guaranteed and expert technical support

- Replacement or refund for products not performing as stated on the datasheet
- Valid for 12 months from date of delivery
- Response to your inquiry within 24 hours
- We provide support in Chinese, English, French, German, Japanese and Spanish
- Extensive multi-media technical resources to help you

- We investigate all quality concerns to ensure our products perform to the highest standards

If the product does not perform as described on this datasheet, we will offer a refund or replacement. For full details of the Abpromise, please visit <https://www.abcam.com/abpromise> or contact our technical team.

Terms and conditions

- Guarantee only valid for products bought direct from Abcam or one of our authorized distributors